

# **Inverter 48v 16**





## Inverter 48v 16

---



### [48V Solar Inverters: 2025 Buyer's Guide & Top Picks ?](#)

What is a 48V Solar Inverter? A 48V solar inverter converts direct current (DC) generated by solar panels into alternating current (AC), specifically designed for 48V battery ...

[WhatsApp](#)

### **48v Inverters -- The Home Upgrade**

The 48V Inverters collection includes pure sine wave inverters, inverter chargers, and hybrid inverter systems. Each product type offers unique capabilities tailored to meet diverse off-grid, ...

[WhatsApp](#)



### **UL1741 8KW Solar Hybrid Inverter Off Grid 48V DC to 110/240V ...**

Electrically integrated solar inverter consists of a 8KW 10KW and 12KW DC 48V to 120/240-volt AC split phase pure sine wave inverter with two 80A MPPT solar charge controller, and AC ...

[WhatsApp](#)



### **16KW Solar Hybrid Inverter 48V DC to 120V/240V AC Split ...**

PV modules: converts light energy into DC energy, which can be used to charge the battery via an inverter or directly inverted into AC power



to supply the load. Utility grid or ...

[WhatsApp](#)



### **AIMS Power PWRINV500048W Power Inverter, 5000 Watt Max ...**

AIMS Power PWRINV500048W Power Inverter, 5000 Watt Max Continuous Power, 48V, 10000 Watts Peak Surge Power, Modified Sine Wave, Cooling Fan Thermally Controlled, AC Direct Connect Terminal

[WhatsApp](#)



### **48V 5000W Inverter, Including Solar Controller, Pure Sine ...**

Amazon : 48V 5000W Inverter, Including Solar Controller, Pure Sine Maximum Off-Grid Smart Integrated Machine, Suitable for 48V Lead-Acid/Lithium Battery : Patio, Lawn & ...

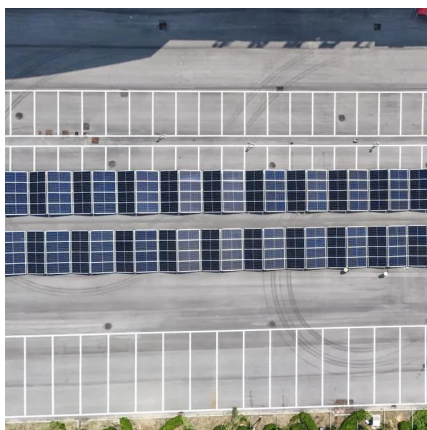
[WhatsApp](#)



### **[EG4 FlexBOSS21 Inverter , 16kW , Hybrid , 48V](#)**

Versatile and Powerful Hybrid Inverter. The EG4 FlexBOSS21 (V 1.1) is a versatile 48V split-phase, hybrid inverter/charger that offers the same dependable power as the 18kPV with ...

[WhatsApp](#)



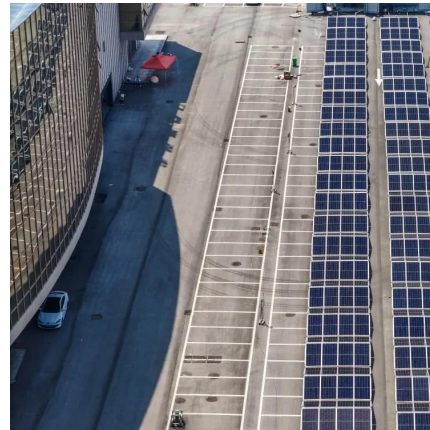




### **Inverter 48V 1600VA Victron Energy MultiPlus 48/1600/20-16**

The Multiplus Inverter is a pure sine wave inverter, a complex battery charger characterizing adaptive charging technology, and a high-speed AC switch in one compact enclosure.

[WhatsApp](#)



### **16KW Solar Hybrid Inverter 48V DC to 120V/240V AC Split Power Inverter**

PV modules: converts light energy into DC energy, which can be used to charge the battery via an inverter or directly inverted into AC power to supply the load. Utility grid or ...

[WhatsApp](#)

## **Contact Us**

---

For catalog requests, pricing, or partnerships, please visit:  
<https://www.straighta.co.za>