

# Inverter 12v battery





## Overview

---

What is a 12V battery inverter?

Inverters allow you to use 12V Dakota Lithium batteries to power household electronics that require 120V AC (the wall plug in your home). Rated at 1200VA and its RMS watts is 850, peak of 1000, this professional grade Victron inverter takes DC power (the power that comes from batteries or solar panels) and transforms it into AC power.

What is a 12V DC power inverter?

This is where a power inverter comes in. Definition and Working Principle A 12V DC power inverter is a device that converts low-voltage direct current (DC) power from a 12V battery (such as a car battery or deep-cycle battery) into 120V alternating current (AC) power, making it suitable for household appliances and electronic devices.

How does a 12 volt power inverter work?

This heavy duty Power Inverter connects directly to a 12 Volt DC battery to power microwaves, power tools, televisions, gaming consoles, home electronics and small appliances in your vehicle. This unit also features an LCD display, which shows the output wattage or input voltage and battery level.

What is a 12V car power inverter?

A 12V car power inverter is a must-have for road trips, mobile workstations, and emergency preparedness. It allows drivers and passengers to charge and use electronic devices directly from the vehicle's battery or cigarette lighter port. Devices Powered: Laptops, smartphones, car refrigerators, small power tools, portable gaming consoles.

Does a power inverter have a battery charger?

Power Inverters with built in direct current battery chargers provide a uninterruptible power supply. If you require a home power supply backup this



would be the solution.

What type of power does a power inverter use?

In many off-grid or mobile power scenarios, standard household appliances require AC (alternating current) power, but most batteries and vehicle power systems provide DC (direct current) power at 12 volts. This is where a power inverter comes in. Definition and Working Principle



## Inverter 12v battery

---



### 12v Inverter, 12v DC to 110v/220v AC Power Inverter , inverter

12V 300-watt power inverter for sale. The modified sine wave inverter delivers 600-watt peak power and converts 12V DC from battery or car lighter to AC 110V or 220V household power.

...

[WhatsApp](#)

### Exploring the Best 12V Power Inverters: A Comprehensive Guide

At its core, a 12V power inverter is a device that converts direct current (DC) from a car battery into alternating current (AC), which is required by most household appliances. Think of it as a ...

[WhatsApp](#)



### 12-volt-Battery Power Inverters at Lowes

Change direct current (DC) power to alternating current (AC) power with a power inverter. These devices can help you charge small devices, including smartphones, tablets, TVs and small ...

[WhatsApp](#)

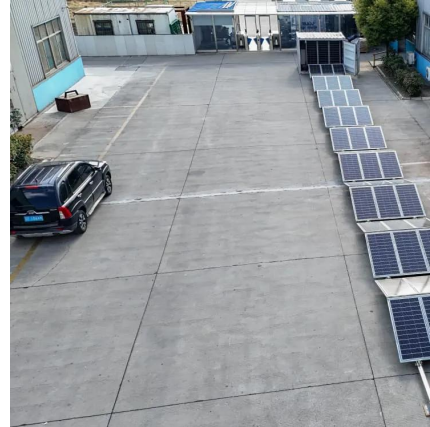
### 12 Volt DC Power Inverter: In-Depth Learning and Buying Guide

A 12V DC power inverter is a device that converts low-voltage direct current (DC) power from a 12V battery (such as a car battery or



deep-cycle battery) into 120V alternating ...

[WhatsApp](#)



### **Renogy 3000w Pure Sine Wave Inverter Charger 12V DC to 120V ...**

Renogy 3000w Pure Sine Wave Inverter Charger  
12V DC to 120V AC Surge 9000w for Off-Grid  
Solar RV Boat Home w/LCD Display, Auto  
Transfer Switch, Compatible with Lithium Battery

[WhatsApp](#)

### **12V-220V/230V Battery Inverter , 3000 Watt Pure Sine Wave**

Optimized for 12 VDC system voltage and work  
perfectly with all types of batteries. Both  
terminals are equipped with caps to ensure your  
safety. A compact design with 18.7 x 9.3 x 4.0 in  
and ...

[WhatsApp](#)



## **Contact Us**

For catalog requests, pricing, or partnerships, please visit:  
<https://www.straightta.co.za>