

Installation of photovoltaic panels on roof slope





Installation of photovoltaic panels on roof slope



Solar panel efficiency: how much does the orientation and

Truth be told, there are many factors that make a roof more or less suitable, but while some roof features make installation completely impossible, others have a minimal ...

[WhatsApp](#)

Installation of Photovoltaic Panels on the ground, roof, balcony or

Sloped roofs are the most popular location for photovoltaic installations in Poland, particularly in single-family homes. The natural slope facilitates optimal sunlight capture, enhancing ...

[WhatsApp](#)



Is It Safe to Install Photovoltaic Panels on a Sloping Roof? A

A Comprehensive Guide When Solar Panels Meet Sloped Roofs: The Safety Equation Imagine your roof as a ski slope - but instead of snowboarders, it's hosting sleek photovoltaic panels ...

[WhatsApp](#)

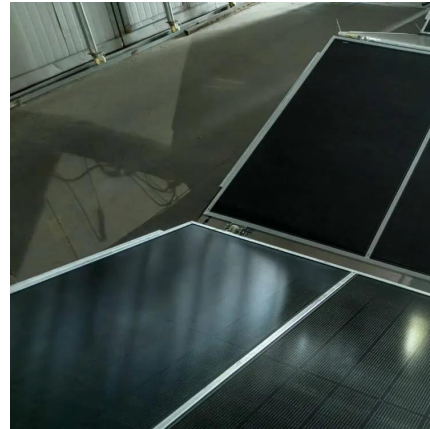
Photovoltaics: What You Need to Know Before Installing Solar Panels ...

With improvements in technology and the variety of federal and private programs providing options for installing photovoltaic (PV) arrays, or



solar panels, building owners ...

[WhatsApp](#)



How to Install Solar Panels on a Sloped Roof: Step-by-Step ...

Learn how to effectively install solar panels on a sloped roof with our detailed guide. Discover the benefits, step-by-step installation process, safety tips, and maintenance advice to maximize ...

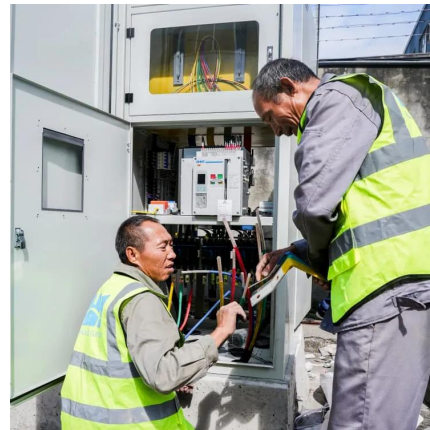
[WhatsApp](#)



Complete Guide: How to Install a Solar Panel on a Sloped Roof

Looking to install solar panels on a sloped roof? Discover this step-by-step guide on how to install solar panels, key considerations, and tips for a successful installation.

[WhatsApp](#)



What Is the Minimum Roof Pitch for Solar Panels?-sic-solar

When planning a solar panel installation, one of the critical factors to consider is the roof pitch--the angle or slope of your roof. The pitch not only affects energy production but ...

[WhatsApp](#)





[How to install solar energy on a slope , NenPower](#)

Embarking on the journey to install solar energy systems on sloped surfaces entails a thoughtful blend of planning, execution, and ongoing care. It is vital to evaluate the ...

[WhatsApp](#)



[Roof Pitch for Solar Panels Calculator](#)

For most residential properties, a roof with a slope between 30° and 40° is considered optimal for solar panel installation. This angle allows solar panels to lie flat against the roof without ...

[WhatsApp](#)

Is It Safe to Install Photovoltaic Panels on a Sloping Roof? A

Imagine your roof as a ski slope - but instead of snowboarders, it's hosting sleek photovoltaic panels harvesting sunlight. The question isn't whether solar panels can ride this slope, but how ...

[WhatsApp](#)



Contact Us

For catalog requests, pricing, or partnerships, please visit:
<https://www.straightta.co.za>