

Install photovoltaic inverter connection





Overview

How do you wire a solar inverter?

Facing them towards the equator is usually a good idea. Plan your wiring route from the solar panels to the inverter and from the inverter to the mains supply. It's good to have a diagram to guide you. Connect the DC output from the solar panels to the DC input in your solar inverter.

What do you need to install a solar inverter?

Beyond the solar inverter, you'll need other items like solar panels, mounting hardware, cabling, and possible battery storage systems, among others. Count your costs before you dig the first hole. You'll typically be looking at upfront costs for the equipment, permits, and possible professional installation.

How long does it take to install a solar inverter?

Typically, the physical installation of the solar panel system can be finished within 3-5 days. However, this can vary depending on the size and complexity of the system. With this guide on how to install a solar inverter at home, you now have the basics at your fingertips. You can do it! Best of luck on your solar installation journey.

How do you connect a solar inverter to a battery storage system?

Connect the DC output from the solar panels to the DC input in your solar inverter. If you're using an off-grid or hybrid system, you'll now need to connect the output from the solar inverter to the battery storage system. If you're setting up a grid-tied or hybrid system, your installation will require a connection to the utility grid.

What should you know before installing a solar inverter?

Any solar inverter installation project must have a clearly laid out plan that includes measures to ensure everyone's safety. The fact is that there are a



few things you can do to ensure the solar installation process runs smoothly from start to finish before you even open your system. Here are some tips:.

Where should a solar inverter be installed?

When deciding on the installation location for your solar inverter, several factors must be considered. Ideally, the inverter should be installed indoors, near a sub-board for houses or the main switchboard for businesses.



Install photovoltaic inverter connection



[How to Connect Solar Inverter for Solar Homes](#)

So, here is a detailed guide on how to install the solar PV inverter practically. Not only to home owners interested in solar power but also to the technicians and enthusiasts, this ...

[WhatsApp](#)

Solar Panel Inverter Installation: A Step-by-Step Guide for ...

Don't worry if you're new to this--today, we're going to walk you through a step-by-step guide on how to install a solar panel inverter. By the end of this guide, you'll feel confident ...

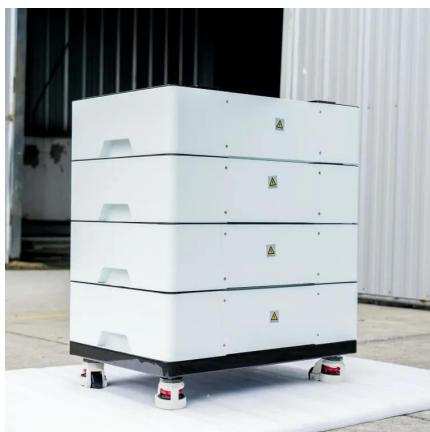
[WhatsApp](#)



[Complete Hybrid Solar Inverter Wiring Installation](#)

Welcome to our comprehensive guide on wiring a hybrid solar inverter! In this video, we take you step-by-step through the entire process of setting up and wiring your hybrid solar inverter system.

[WhatsApp](#)



[Complete Guide For Solar Inverters Installation](#)

Our solar panel installation guide includes step-by-step instructions to help you through every step of the solar and inverter installation process, whether you plan on installing ...



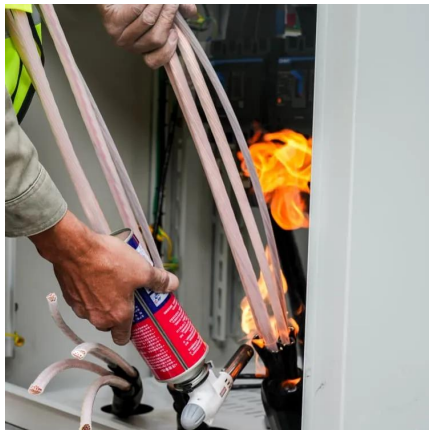
[WhatsApp](#)



Detailed Step-by-Step Installation Guide for a Solar Inverter

Locate the positive (+) and negative (-) terminals on the inverter. Use appropriately sized, weather-rated wires (usually UV-resistant). Strip about ½ inch of insulation off the ends ...

[WhatsApp](#)



How to Install Solar Inverter at Home [Step by Step Guide]

For a DIY solar installation, it is crucial to ensure a smooth solar power inverter installation process. Here is a step-by-step procedure to help you install a solar panel inverter ...

[WhatsApp](#)



The Practical Guide of Inverter Installation for Solar Panel

Before doing an inverter installation, here are several checklists you need to prepare: Plan of your power needs to select the inverter type. Choose a suitable location. Set up the battery bank. ...

[WhatsApp](#)

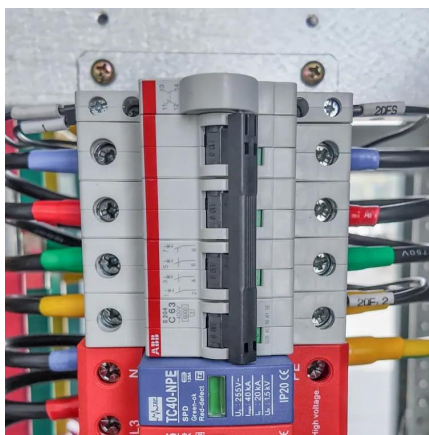




Guidelines on Rooftop Solar PV Installation for Solar Service ...

List of Definitions AC side: Part of a PV installation from the AC terminals of the PV Inverter to the point of connection of the PV supply cable to the Electrical Installation. Array: Mechanically ...

[WhatsApp](#)



How to Install Solar Inverter: A Step by Step Comprehensive Guide

To install a solar inverter, you first need to mount it onto a wall with sufficient ventilation. Then, connect the solar array input wiring to the inverter and connect the output ...

[WhatsApp](#)

Contact Us

For catalog requests, pricing, or partnerships, please visit:
<https://www.straightta.co.za>