

Huawei s 5G base station power consumption lags behind





Overview

How much power does a 5G station use?

The power consumption of a single 5G station is 2.5 to 3.5 times higher than that of a single 4G station. The main factor behind this increase in 5G power consumption is the high power usage of the active antenna unit (AAU). Under a full workload, a single station uses nearly 3700W.

Why does 5G use more power than 4G?

The data here all comes from operators on the front lines, and we can draw the following valuable conclusions: The power consumption of a single 5G station is 2.5 to 3.5 times higher than that of a single 4G station. The main factor behind this increase in 5G power consumption is the high power usage of the active antenna unit (AAU).

How does mobile data traffic affect the energy consumption of 5G base stations?

The explosive growth of mobile data traffic has resulted in a significant increase in the energy consumption of 5G base stations (BSs).

What is 5G BS power consumption?

The 5G BS power consumption mainly comes from the active antenna unit (AAU) and the base band unit (BBU), which respectively constitute BS dynamic and static power consumption. The AAU power consumption changes positively with the fluctuation of communication traffic, while the BBU power consumption remains basically unchanged , , .

Can 5G reduce energy consumption?

However, the energy consumption of 5G networks is today a concern. In recent years, the design of new methods for decreasing the RAN power consumption has attracted interest from both the research community and standardization bodies, and many energy savings solutions have been



proposed.

How does a 5G network affect power supply requirements?

If traditional power solutions are used for 5G sites, which have higher power consumption, for a given output voltage and a given cable cross-sectional area, the current that passes through the cable increases significantly. As a result, the voltage decreases greatly during power transmission, and the power supply requirements cannot be met.



Huawei's 5G base station power consumption lags behind



How energy-efficient are Huawei's 5G base stations compared to ...

Power Consumption: Huawei's 5G base stations have significantly lower power consumption compared to their 4G counterparts. This is achieved through advanced power management ...

[WhatsApp](#)

[Front Line Data Study about 5G Power Consumption](#)

The power consumption of a single 5G station is 2.5 to 3.5 times higher than that of a single 4G station. The main factor behind this increase in 5G power consumption is the high power ...

[WhatsApp](#)



How does Huawei's 5G base station technology compare to other ...

Key Features of Huawei's 5G Base Station Technology High Performance: Huawei's 5G base stations are designed to deliver high performance, supporting faster data speeds and lower ...

[WhatsApp](#)



5G Power: Creating a green grid that slashes costs, emissions

Energy consumption per unit of data (watt/bit) is much less for 5G than 4G, but power consumption is much higher. In the 5G era, the



maximum energy consumption of a 64T64R ...

[WhatsApp](#)



AI-based energy consumption modeling of 5G base stations: an ...

The energy consumption of 5G networks is one of the pressing concerns in green communications. Recent research is focused towards energy saving techniques of base ...

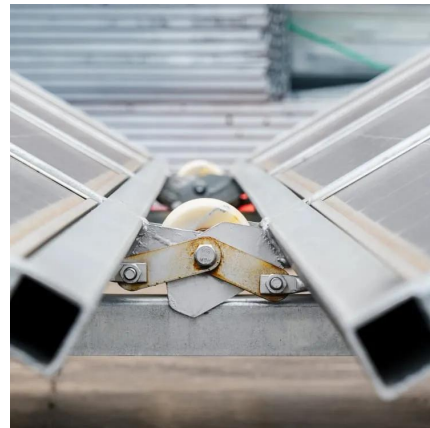
[WhatsApp](#)



Power Consumption Modeling of 5G Multi-Carrier Base ...

Importantly, this study item indicates that new 5G power consumption models are needed to accurately develop and optimize new energy saving solutions, while also considering the ...

[WhatsApp](#)



5G Power: Creating a green grid that slashes costs, emissions

Importantly, this study item indicates that new 5G power consumption models are needed to accurately develop and optimize new energy saving solutions, while also considering the ...

[WhatsApp](#)





Huawei will launch lowest power consumption 5G base station, ...

Through joint verification, the China Mobile Research Institute and Huawei found that this solution substantially reduces network energy consumption, with an average energy ...

[WhatsApp](#)



Why does 5g base station consume so much power and how to ...

The power consumption of the 5G base station mainly comes from the AU module processing and conversion and high power-consuming high radio frequency signals, the ...

[WhatsApp](#)

Energy consumption optimization of 5G base stations considering

An energy consumption optimization strategy of 5G base stations (BSs) considering variable threshold sleep mechanism (ECOS-BS) is proposed, which includes the initial ...

[WhatsApp](#)



Contact Us

For catalog requests, pricing, or partnerships, please visit:
<https://www.straighta.co.za>