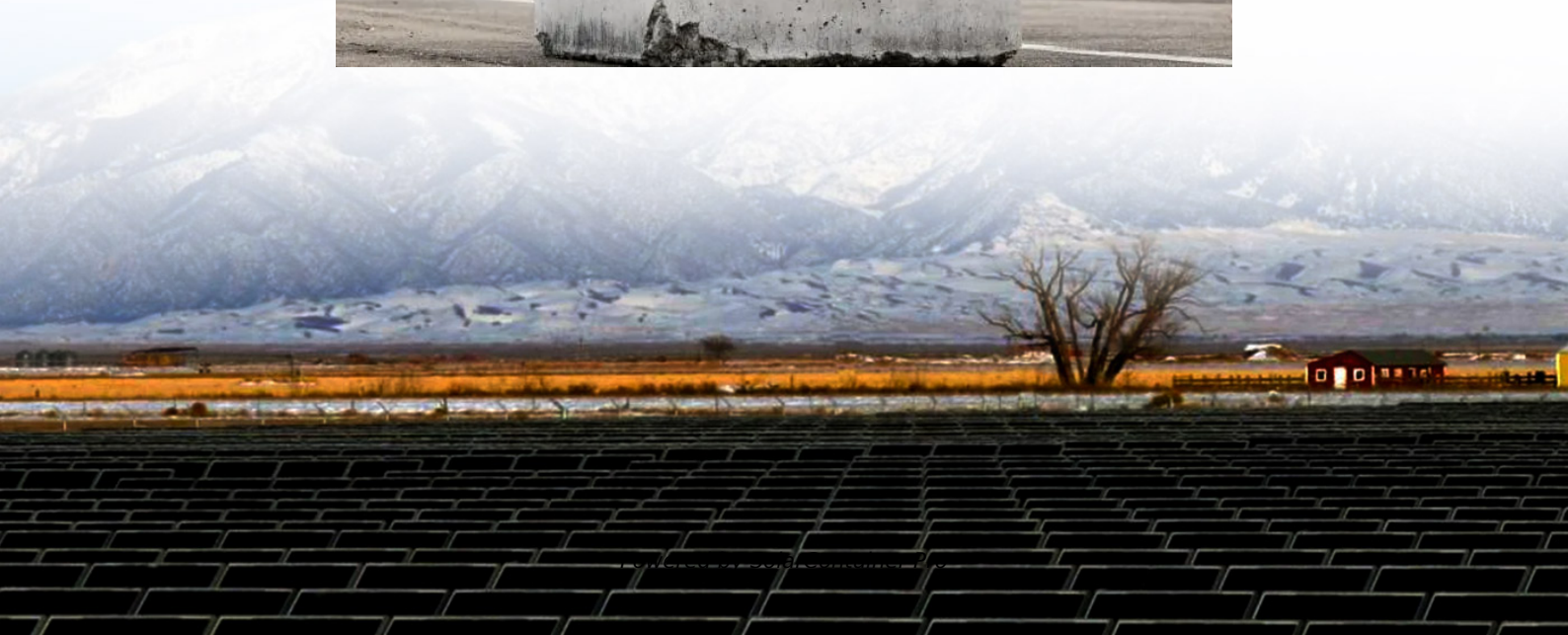


# **Huawei grid-connected inverter working mode**





## Overview

---

Set the working mode of the inverter based on the grounding status at DC side and the connection to the power grid. Specifies whether the inverter output has a neutral wire based on the application scenario. Specifies whether to allow the inverter to automatically start after the power grid recovers. How to configure a Huawei inverter for specific charging and discharging periods?

To configure your Huawei inverter for specific charging and discharging periods, you need to change the operation mode to 'TOU'. - In this mode, TOU (time-of-use) is selected. You can manually set the charge and discharge time segments.

How do Huawei hybrid inverters work?

Huawei hybrid inverters have four modes of operation: This setting allows as much of the locally generated energy as possible to be used locally, which is the main reason why hybrid systems are created. In this case, if we have surplus production, the system will charge the batteries as long as it can.

How do I change the grid connection status of the inverter?

The grid connection status of the inverter is switched by using the Backup Box. The critical load power does not exceed the max off-grid output power of the Inverter. You can add inverters and batteries to increase capacity. A maximum of three inverters can be cascaded.

How do I enable off-grid mode on my Emma inverter?

After the off-grid mode is set, the inverter supports off-grid operation. Connect to the EMMA. On the home screen, choose Monitor > Inverter, tap Set > Feature parameters, and enable Off-grid mode. Connect to the inverter by referring to A Connecting to the Inverter on the App.

How do I connect my phone to the inverter?

Using your phone's camera, you first need to scan the barcode on the side of



the inverter so that your phone can connect to the inverter's network. The first time you log in, you will need to enter a password to log in later. In the settings we connect it to the local network to bring the system online.

What are Huawei's solutions for hybrid systems?

With the development of technology and the spread of PV, hybrid systems have become increasingly important. In this article, we look at Huawei's solutions for hybrid systems. Single-phase products range from 2 to 6 kW. For this size class, they have 2 MPPTs as usual. They can be commissioned via the integrated WLAN module with the FusionSolar app.



## Huawei grid-connected inverter working mode

---



### Huawei Photovoltaic Grid-Connected Inverter Parameters: The ...

As global energy prices fluctuate, Huawei's grid-tied inverters have become the go-to solution for commercial installations, particularly after their Q1 2025 firmware update addressing dynamic ...

[WhatsApp](#)

### Click to edit Master title style

In off-grid mode, if the neutral wire of the backup load and that of the grid are disconnected, the Backup Box functions are not affected and the inverter can switch between the on-grid and off ...

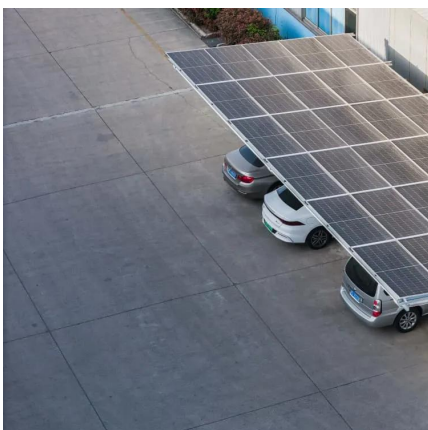
[WhatsApp](#)



### [How to set up grid charging on Huawei inverter](#)

To configure your Huawei inverter for specific charging and discharging periods, you need to change the operation mode to 'TOU'. - In this mode, TOU (time-of-use) is selected. You can ...

[WhatsApp](#)



### [Huawei's solutions for hybrid systems](#)

This device also communicates with the inverter, so it can send it a signal so that the inverter does not switch off when the grid is off, but continues to operate from batteries or PV. The ...



[WhatsApp](#)



### [Setting Off-Grid Mode for the Inverter](#)

Method 1: Setting Off-Grid Mode for the Inverter Using the SmartGuard Connecting the EMMA on the App. On the home screen, choose Monitor > Inverter, tap Set > Feature parameters, and ...

[WhatsApp](#)



### [Grid-tied and Off-grid ESS Networking](#)

In this scenario, the inverters can be connected to the grid only at the same phase and controlled only by a single-phase power meter. Grid connection at different phases or using a three ...

[WhatsApp](#)



### **Setting Inverter Parameters (Company Administrator/Installer)**

This document provides common troubleshooting cases for Huawei residential Smart PV solution and provides reference for engineers and users to handle common issues.

[WhatsApp](#)



## Contact Us

---

For catalog requests, pricing, or partnerships, please visit:  
<https://www.straighta.co.za>