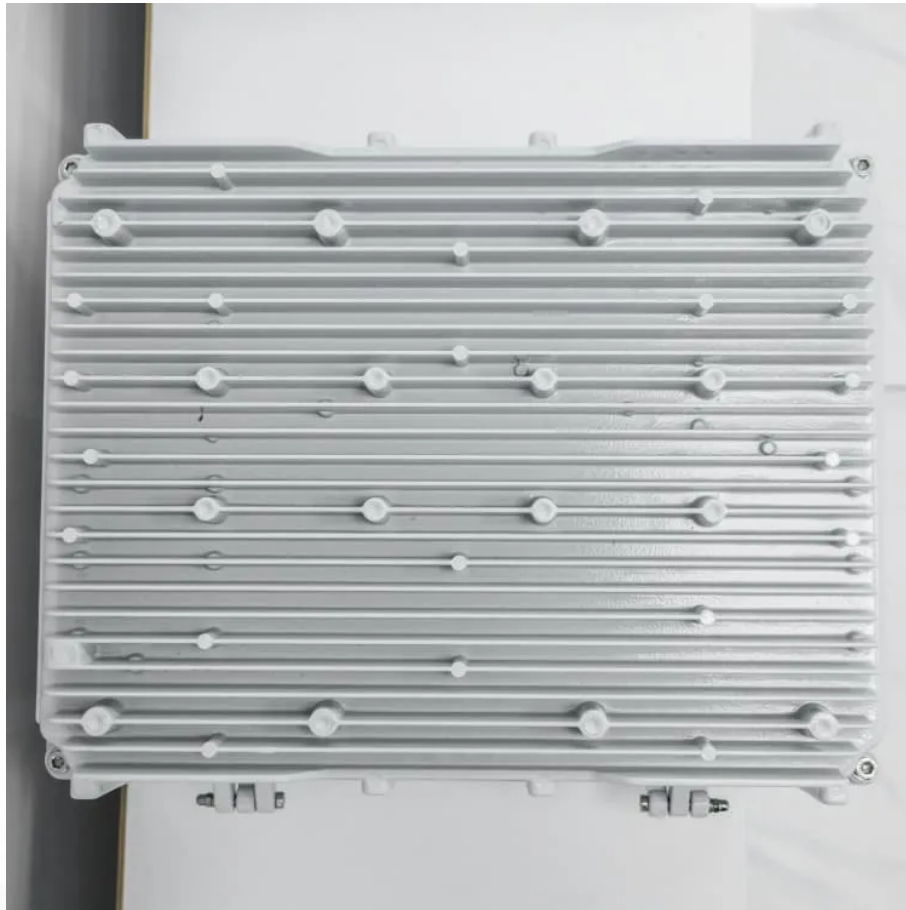


Huawei greenhouse double-glass thin-film modules





Overview

What is a glass greenhouse?

A glass green house, also known as a glasshouse or a hothouse, is a type of greenhouse structure that utilizes glass as the primary material for its walls and roof. Glass greenhouses offer several advantages over other types of greenhouse materials, such as plastic or polycarbonate. Here are some key benefits and advantages of glass greenhouses:.

What is glazing in a greenhouse?

We use the term glazing to describe any transparent structural material, whether glass, rigid plastics like polycarbonate, or plastic films. If designing your own solar greenhouse, these materials are critical to greenhouse efficiency and performance.

Why do greenhouses use plastic films?

Light transmittance: The plastic film is designed to achieve optimal light transmittance, ensuring that plants receive the sunlight they need for photosynthesis. Some films even have light diffusion properties, which help distribute light evenly throughout the greenhouse, reducing the risk of damaging plants due to overheating.

What is a greenhouse integrated PV (gipv) module?

Get in touch! Traditional greenhouses rely on external fossil fuel derived energy sources to power lighting, heating and forced cooling. Specially designed BiPV solar glass modules for greenhouses, Heliene's Greenhouse Integrated PV (GiPV) modules offer a sustainable alternative with no additional racking or support required.

What materials are used in a solar greenhouse?

In a solar greenhouse, glazing materials are critical to efficiency and performance. Glazing can be made from glass, rigid plastics like



polycarbonate, or plastic films.

What are the advantages and disadvantages of glass greenhouses?

Glass greenhouses offer several advantages over other types of greenhouse materials, such as plastic or polycarbonate. Here are some key benefits and advantages of glass greenhouses: Light Transmission: Glass has excellent light transmission properties, allowing a high percentage of sunlight to enter the greenhouse.



Huawei greenhouse double-glass thin-film modules



[Choosing The Best Glazing For Your Greenhouse](#)

A double clear glass window with no low-e coatings has a light transmittance up to 80%. That means 80% of the light that hits that material at a perpendicular angle gets through.

...

[WhatsApp](#)

High Quality Bifacial Double Glass Greenhouse Pv Module 400 ...

The High Quality Bifacial Double Glass Greenhouse Pv Module is a cutting-edge solar panel designed for residential use, offering superior energy efficiency and durability. With a power ...

[WhatsApp](#)



[Huawei greenhouse double glass thin film modules](#)

What is a double-glass module? Double-glass modules are characterized by increased reliability, especially for large-scale photovoltaic projects. They include better resistance to higher

...

[WhatsApp](#)



Transparent and Weather-Resistant Thin-Film Greenhouse Panels

Glass greenhouses have the characteristics of beautiful appearance, good light transmittance, good display effect and long service life. Glass



greenhouses are a better choice for places with ...

[WhatsApp](#)



greenhouse building solar pv modules system CdTe thin film ...

Buy greenhouse building solar pv modules system CdTe thin film power generation glass solar panel solar panel transparent glass at Aliexpress for . Find more 13, 200211142 and 5 ...

[WhatsApp](#)



Top Sell Greenhouse Solar Photovoltaic Panels Double Glass Solar PV Modules

Currently, Quantum has several manufacturing bases in China with an annual capacity of 60 millions m2 of PVB interlayer, 4 millions m2 of PDLC & E/C films, 3 millions m2 of TPU & SGP ...

[WhatsApp](#)



[Thin-film amorphous silicon greenhouses begin to grow](#)

The thin-film amorphous silicon modules have a clear zinc oxide back conductive layer as well as clear front glass coated with fluorine tin oxide. The photovoltaic location of the ...

[WhatsApp](#)





High Quality Bipv Manufacture Glass Transparent Thin Film Solar ...

Key attributes Material THIN-FILM Panel Efficiency 21.6% Place of Origin Fujian, China Cell size 182mmx182mm Panel Dimensions 1200*700*7mm Type Bifacial, Double-glass, CDTE Brand ...

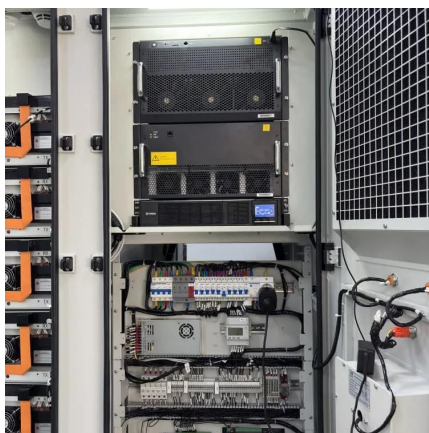
[WhatsApp](#)



Weather-Resistant Thin-Film Greenhouse Panels for Reliable ...

Beautiful appearance, high and stable light transmittance, large ventilation area, good sealing performance, and strong drainage capacity; the disadvantage is that the thermal insulation ...

[WhatsApp](#)



[BiPV Solar Glass for Greenhouses , Heliene](#)

Replacing the glass panels on greenhouse roofs, Heliene's GiPV modules allow greenhouses to run on 100% renewable energy which dramatically reduces energy bills - up to 40-60% ...

[WhatsApp](#)



china Plastic greenhouse films, glass green house, polycarbonate ...

In this news article, we will explore two significant developments in greenhouse technology: plastic greenhouse films and polycarbonate sheets. These advancements are ...

[WhatsApp](#)



Ultra-thin glass: the way forward for the low-energy greenhouse?

Researchers are exploring whether it could be an alternative to the conventional 4 mm glass used in greenhouses. The material is very lightweight and allows plenty of light ...

[WhatsApp](#)



Contact Us

For catalog requests, pricing, or partnerships, please visit:
<https://www.straighta.co.za>