

Huawei Palau Flywheel Energy Storage





Overview

A typical system consists of a flywheel supported by connected to a . The flywheel and sometimes motor-generator may be enclosed in a to reduce friction and energy loss. First-generation flywheel energy-storage systems use a large flywheel rotating on mechanical bearings. Newer systems use composite

What is the difference between a flywheel and a battery storage system?

Flywheel Systems are more suited for applications that require rapid energy bursts, such as power grid stabilization, frequency regulation, and backup power for critical infrastructure. Battery Storage is typically a better choice for long-term energy storage, such as for renewable energy systems (solar or wind) or home energy storage.

What is a flywheel energy storage system (fess)?

A flywheel energy storage system stores energy mechanically rather than chemically. It operates by converting electrical energy into rotational kinetic energy, where a heavy rotor (the flywheel) spins at high speed within a vacuum chamber.

How does a flywheel energy storage system work?

A flywheel energy storage system works by spinning a large, heavy wheel, called a flywheel at very high speeds. The energy is stored as rotational kinetic energy in the spinning wheel. When electricity is needed, the flywheel's rotational speed is reduced, and the stored kinetic energy is converted back into electrical power using a generator.

Are flywheel systems a good choice for solar power generation?

Flywheel systems are ideal for this form of energy time-shifting. Here's why: Solar power generation peaks in the middle of the day, but energy demand peaks in the late afternoon and early evening. Flywheels can quickly absorb excess solar energy during the day and rapidly discharge it as demand increases.



Does Beacon Power have a flywheel energy storage system?

In 2010, Beacon Power began testing of their Smart Energy 25 (Gen 4) flywheel energy storage system at a wind farm in Tehachapi, California. The system was part of a wind power and flywheel demonstration project being carried out for the California Energy Commission.

How efficient are flywheels?

Modern flywheels can achieve round-trip efficiencies of 85–90%, comparable to advanced battery systems. Moreover, flywheels can store and release energy with minimal losses, particularly when used for short-duration storage (on the order of minutes to a few hours).



Huawei Palau Flywheel Energy Storage



[Top 5 Advanced Flywheel Energy Storage Startups in 2025](#)

Unlike conventional methods, FESS provides longer lifespans, rapid response times, and minimal environmental impact, making it a compelling option for future energy storage. This article ...

[WhatsApp](#)

A review of flywheel energy storage systems: state of the art ...

Primary candidates for large-deployment capable, scalable solutions can be narrowed down to three: Li-ion batteries, supercapacitors, and flywheels. The lithium-ion ...

[WhatsApp](#)



Flywheel Energy Storage System: What Is It and How Does It ...

A flywheel energy storage system is a mechanical device used to store energy through rotational motion. When excess electricity is available, it is used to accelerate a flywheel to a very high ...

[WhatsApp](#)

[Overview of Flywheel Systems for Renewable Energy ...](#)

Energy can be stored through various forms, such as ultra-capacitors, electrochemical batteries, kinetic flywheels, hydro-electric power



or compressed air. Their comparison in terms of specific ...

[WhatsApp](#)



[Flywheel Energy Storage: Alternative to Battery Storage](#)

What is a Flywheel Energy Storage System (FESS)? A flywheel energy storage system stores energy mechanically rather than chemically. It operates by converting electrical ...

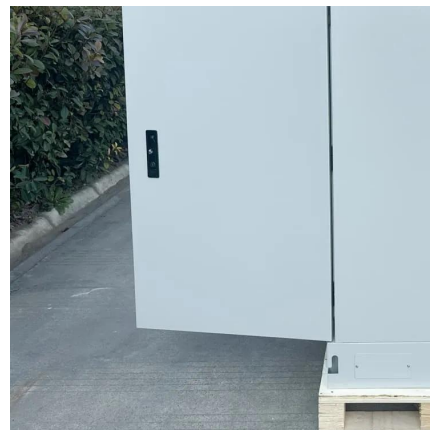
[WhatsApp](#)



China connects world's largest flywheel energy storage system to ...

A flywheel energy storage system works by spinning a large, heavy wheel, called a flywheel at very high speeds. The energy is stored as rotational kinetic energy in the spinning ...

[WhatsApp](#)



[Development and prospect of flywheel energy storage ...](#)

Fig. 1 shows the comparison of different mechanical energy storage systems, and it is seen that the Flywheel has comparatively better storage properties than the compressed air ...

[WhatsApp](#)

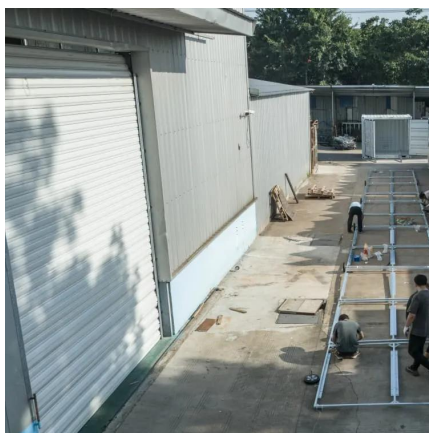




Flywheel Green Electricity: The Future of Instant Energy Storage

Unlike chemical-based solutions, flywheel energy storage converts electricity into rotational kinetic energy. A vacuum-sealed rotor spins at 40,000 RPM, losing only 2% charge ...

[WhatsApp](#)



Flywheel energy storage

OverviewMain componentsPhysical characteristicsApplicationsComparison to electric batteriesSee alsoFurther readingExternal links

A typical system consists of a flywheel supported by rolling-element bearing connected to a motor-generator. The flywheel and sometimes motor-generator may be enclosed in a vacuum chamber to reduce friction and energy loss. First-generation flywheel energy-storage systems use a large steel flywheel rotating on mechanical bearings. Newer systems use carbon-fiber composite rotors

[WhatsApp](#)



\$200 Million For Renewables-Friendly Flywheel Energy Storage

1 day ago· \$200 Million For Advanced Energy Storage Torus Energy is among the flywheel innovators ready to push their technology into the market here and now.

[WhatsApp](#)

A review of flywheel energy storage systems: state of the art and

In this paper, state-of-the-art and future opportunities for flywheel energy storage



systems are reviewed. The FESS technology is an interdisciplinary, complex subject that ...

[WhatsApp](#)

[The Status and Future of Flywheel Energy Storage](#)

The core element of a flywheel consists of a rotating mass, typically axisymmetric, which stores rotary kinetic energy E according to (Equation 1) $E = \frac{1}{2} I \omega^2$ [J], where E is the ...

[WhatsApp](#)



Contact Us

For catalog requests, pricing, or partnerships, please visit:
<https://www.straighta.co.za>