

How to turn off the outdoor power supply of the container





Overview

Do shipping containers need electricity?

Grid power: If your shipping container is close to the electrical grid, you can connect it to the grid for a steady supply of power. No matter which power source you choose, it's important to make sure your container's electrical system can handle the amount of power it needs. Safety is crucial when dealing with electricity.

How does electrical work for a shipping container?

When planning electrical work for a shipping container, it's important to understand how the electrical system works. Shipping container electrical wiring is how electricity moves through the container to power things like lights, outlets, and appliances. The basic parts of a shipping container's electrical system include:.

How do I manage the electrical load in a shipping container?

To manage the electrical load, you should: Check the wattage of your appliances. Make sure your wiring and outlets can handle the load. Avoid plugging too many high-wattage appliances into one outlet. Energy efficiency is an important factor to consider when wiring your shipping container.

Do shipping containers need solar panels?

Solar panels are especially good for containers that are off the grid. Grid power: If your shipping container is close to the electrical grid, you can connect it to the grid for a steady supply of power. No matter which power source you choose, it's important to make sure your container's electrical system can handle the amount of power it needs.

What should I consider when wiring a shipping container?

Energy efficiency is an important factor to consider when wiring your shipping container. Whether you opt for grid power or solar panels, you can improve



the efficiency of your electrical system by: Installing energy-saving appliances, like LED lights and low-energy devices.

How do you protect a shipping container from electric shocks?

Ensure that outlets and switches are properly secured. Regularly check the system for any exposed wires or loose connections. Adding safety features like a ground fault circuit interrupter (GFCI) can greatly lower the risk of electric shocks in a shipping container.



How to turn off the outdoor power supply of the container



Reefer Container Without Genset: A Comprehensive Guide to ...

Without power, there's no way to control the temperature inside the container, which can lead to spoiled goods and significant financial losses. To avoid such pitfalls, it's ...

[WhatsApp](#)

Reefer Container Power Supply: Your Ultimate Guide to Efficient ...

Understanding all these factors helps us predict and manage our reefer container's power supply efficiently ensuring optimal operation while minimizing expenditure on electricity costs. ...

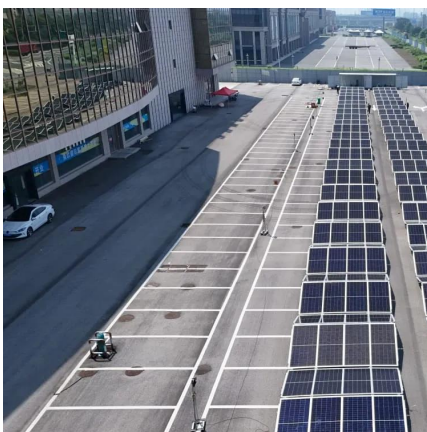
[WhatsApp](#)



FULL BUILD! Shipping Container Shop , BEST Off-Grid Structure ...

This structure gave us the BEST start going off the grid, and we are finally ready to turn it into an enclosed work shop. Full build video with time lapse and voice over narration.

[WhatsApp](#)



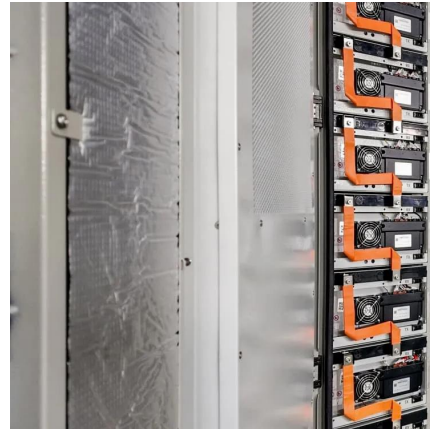
An Essential Guide to Shipping Container Electrical Works

Always switch off the power before working with electrical wiring. Use insulated tools when dealing with electrical parts. Ensure that outlets



and switches are properly secured. ...

[WhatsApp](#)



[Let There Be Light! How to Power a Shipping Container](#)

Electrics are one of our popular standard optional extras offered with all shipping containers and our clients choose electrical packages for a wide range of applications. ...

[WhatsApp](#)



[How to turn off the outdoor solar power .](#) [NenPower](#)

Most solar power systems come equipped with an accessible on/off switch. Finding this switch is vital to initiate the shutdown process. It's typically found near the batteries, ...

[WhatsApp](#)



Propane heater safety 101: the ultimate guide to shutting off your

In this comprehensive guide, we'll walk you through the proper steps on how to turn propane heater off, whether it's a portable or fixed unit. Locate the gas supply valve, ...

[WhatsApp](#)



[Outdoor/Weatherproof Power supply suggestions? : r/FastLED](#)

For the ac power you can use an extension cord that is a 2-prong type and use any beefy phone charger style power supply. Just put the power supply in a water tight case. If you're doing ...

[WhatsApp](#)



Can I run power to a shipping container? Off-Grid Solar Solutions ...

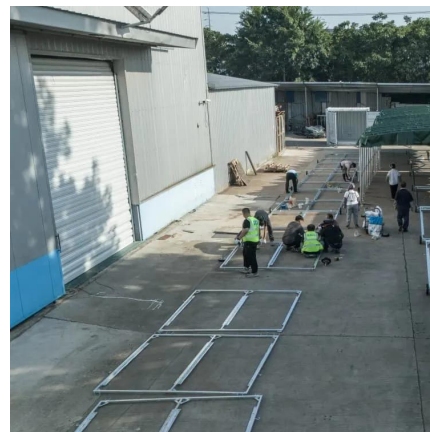
In short, you can indeed run power to a container - either by extending a line from the grid or by turning the container itself into a mini power station using solar panels.

[WhatsApp](#)

[Refrigerated Container Electrical Requirements](#)

Do not arc weld on any components of the container or to any metal or conductive material on which the container is sitting. The electronic circuits of the unit's microprocessor control ...

[WhatsApp](#)



Contact Us

For catalog requests, pricing, or partnerships, please visit:
<https://www.straightta.co.za>