

# **How to replace the battery in a telecom base station**





## Overview

---

How do you replace a battery in a base station?

To replace batteries in a SimpliSafe base station, rotate the base counterclockwise (CCW) to remove it, then remove the batteries and replace them while ensuring the (-) and (+) orientation. When disposing of NiMH batteries, they should be recycled.

How many batteries does the base station take?

The Base Station takes four (4) 1.2V, 1300mAh nickel-metal hydride (NiMH) rechargeable batteries. Regular alkaline batteries should never be inserted into the Base Station, as they may damage the device. Once you have acquired the necessary NiMH rechargeable batteries, you can follow the steps below to replace them:.

What batteries do I need to replace my SimpliSafe base station?

To replace the batteries in your SimpliSafe base station, you need QTY (4) AA nickel-metal hydride (NiMH) rechargeable batteries. Do not use Alkaline or any other non-NiMH batteries. The batteries supplied from SimpliSafe are rated at 1000mAh capacity (very low).

What makes a telecom battery pack compatible with a base station?

Compatibility and Installation Voltage Compatibility: 48V is the standard voltage for telecom base stations, so the battery pack's output voltage must align with base station equipment requirements. Modular Design: A modular structure simplifies installation, maintenance, and scalability.

What type of batteries are used in the base station?

Inside the bottom of the base station are QTY (4) AA nickel-metal hydride rechargeable batteries (abbreviated NiMH or Ni-MH). Note, being RECHARGEABLE, there is a good chance that if you just keep the power on for several hours, they will be recharged.



Which battery is best for telecom base station backup power?

Among various battery technologies, Lithium Iron Phosphate (LiFePO<sub>4</sub>) batteries stand out as the ideal choice for telecom base station backup power due to their high safety, long lifespan, and excellent thermal stability.



## How to replace the battery in a telecom base station

---



### Telecom Battery Backup Systems: Designing Reliable Power ...

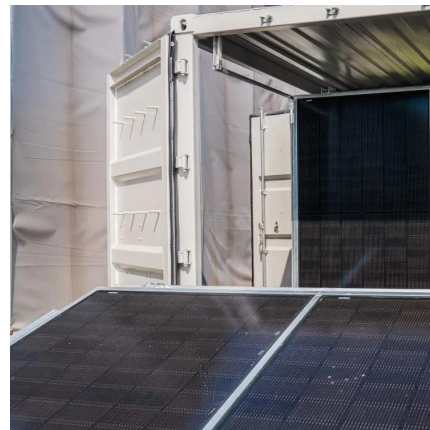
At the heart of uninterrupted telecom service lies a critical component: the battery backup system. In this article, we'll move beyond general battery comparisons and take a ...

[WhatsApp](#)

### Why choose SVC 48V Lithium iron battery for Telecom base station?

A telecom base station is an interface device for mobile devices to access the Internet . The construction of mobile communication base stations is an important part of ...

[WhatsApp](#)



### Telecom Base Station Backup Power Solution: Design Guide for ...

This guide outlines the design considerations for a 48V 100Ah LiFePO4 battery pack, highlighting its technical advantages, key design elements, and applications in telecom ...

[WhatsApp](#)

### ?Changing batteries in base station , SimpliSafe Support Home

But if you ever need to replace your Base Station's batteries, you can find a step-by-step guide here. IMPORTANT: Please make sure that



you use NiMH (nickel-metal hydride) ...

[WhatsApp](#)



### How To Replace Base Station Batteries , SimpliSafe Support Home

You will likely never need to replace your Base Station's batteries as they are rechargeable and meant to last. The Base Station takes four (4) 1.2V, 1300mAh nickel-metal hydride (NiMH) ...

[WhatsApp](#)



### Telecom Base Station Battery Solutions: What You Need To Know

Before you buy telecom batteries, it's important to find the right battery for your base station. It's important to have a battery that matches the ampere-hour rating of your ...

[WhatsApp](#)



### Advanced Telecom Battery manufacturer for the Connected World

The most used batteries in telecom base stations are lead-acid batteries, which are widely used in all kinds of telecom base stations. These batteries are short-lived, inefficient, large, heavy, and ...

[WhatsApp](#)







## What Are the Critical Aspects of Telecom Base Station Backup ...

Telecom base station backup batteries are essential for ensuring uninterrupted communication by providing reliable, long-lasting power during outages. Critical aspects ...

[WhatsApp](#)



## [How to Replace Your ADT TS Base Station Back Up Battery](#)

If you have an ADT Total Security - TSSC - TS Base Station and the back up battery is low, you will want to replace it. You can purchase one here at this link and then watch this video to

[WhatsApp](#)

## How to Effectively Install and Maintain Telecom Batteries

This article covers key practices for installing regular batteries in solar lights, maintaining lead-acid batteries, understanding inverter batteries, managing surplus batteries, ...

[WhatsApp](#)



## Contact Us

---

For catalog requests, pricing, or partnerships, please visit:  
<https://www.straightta.co.za>