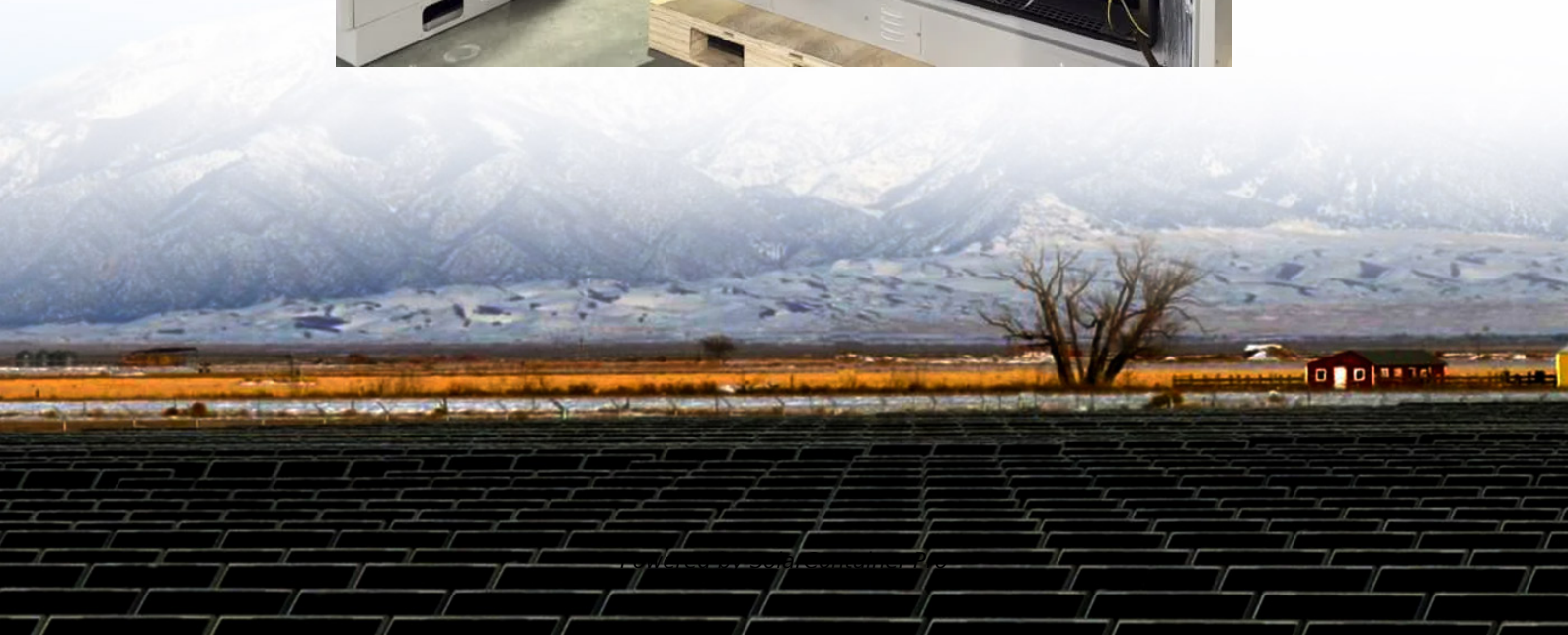


How to match batteries with signal base stations





Overview

What makes a telecom battery pack compatible with a base station?

Compatibility and Installation Voltage Compatibility: 48V is the standard voltage for telecom base stations, so the battery pack's output voltage must align with base station equipment requirements. Modular Design: A modular structure simplifies installation, maintenance, and scalability.

Which battery is best for telecom base station backup power?

Among various battery technologies, Lithium Iron Phosphate (LiFePO₄) batteries stand out as the ideal choice for telecom base station backup power due to their high safety, long lifespan, and excellent thermal stability.

How do you protect a telecom base station?

Backup power systems in telecom base stations often operate for extended periods, making thermal management critical. Key suggestions include: Cooling System: Install fans or heat sinks inside the battery pack to ensure efficient heat dissipation.

What is base station operation?

This topic introduces the concept of base station operation, provides information to help you identify good setup locations, describes best practices for setting up the equipment, and outlines the precautions that you need to take to protect the equipment.

When should a battery pack be balanced?

Assuming the battery pack will be balanced the first time it is charged and in use. Also, assuming the cells are assembled in series. If the cells are very different in State of Charge (SoC) when assembled the Battery Management System (BMS) will have to gross balance the cells on the first charge.

How does the integrated battery work?



When the GNSS receiver is connected to a power source that can support the power drain, the integrated battery is continuously charged from the connected power source. This helps to ensure that the battery stays charged (SPS Modular only).



How to match batteries with signal base stations



What Are the Key Considerations for Telecom Batteries in Base Stations?

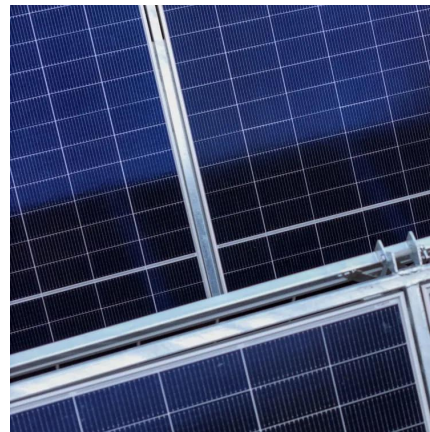
Telecom batteries for base stations are backup power systems that ensure uninterrupted connectivity during grid outages. Typically using valve-regulated lead-acid ...

[WhatsApp](#)

Selection and maintenance of batteries for communication base stations

Focused on the engineering applications of batteries in the communication stations, this paper introduces the selections, installations and maintenances of batteries for communication ...

[WhatsApp](#)



How to Select the Best ESTEL Battery Backup for Base Stations

When selecting the best telecom battery backup systems for your base stations, you must evaluate several critical factors. These considerations ensure that your system ...

[WhatsApp](#)

Selection and maintenance of batteries for communication base ...

Focused on the engineering applications of batteries in the communication stations, this paper introduces the selections, installations and



maintenances of batteries for communication ...

[WhatsApp](#)



Understanding Base Transceiver Stations: The Backbone of ...

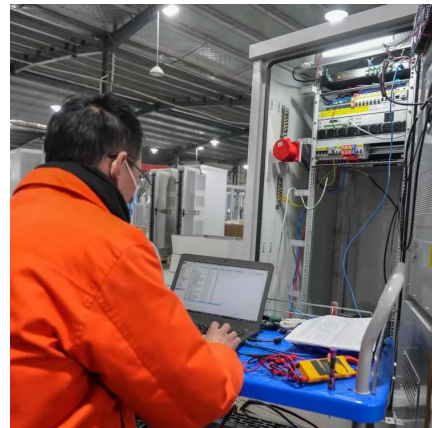
How Base Transceiver Stations Work
Understanding how BTS functions demystifies mobile communication. This section outlines the processes involved in signal transmission and ...

[WhatsApp](#)

[ZTE WIRELESS HOME PHONE BASE USER GUIDE](#)

We know you're excited to use your new ZTE Wireless Home Phone Base, and this user guide will help you get familiar with it, so you can start using it as soon as possible. Each section ...

[WhatsApp](#)



[Simulate the base station signal? : r/worxlandroid](#)

Would it be possible to simulate the base station signal. My plan is to go ahead put the wire in and then somehow simulate that signal because there are three separate areas from the main area ...

[WhatsApp](#)





Every day, billions of people use their phones and devices to connect to each other around the globe. This is made possible by cellular networks operating through hundreds ...

A large white door with black hinges and a handle, set against a green field background. The door is slightly ajar, revealing a black interior panel. The hinges are black and have two screws each. The handle is a long, horizontal black bar. The background is a bright green field with a white fence line in the distance.

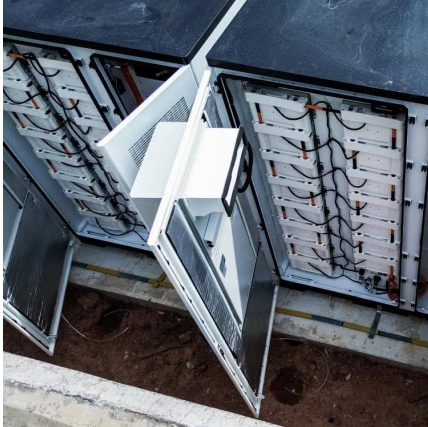


WhatsApp

Telecom base stations require reliable backup power to ensure uninterrupted communication services. Selecting the right backup battery is crucial for network stability and ...

Each base must broadcast with a different transmission delay and station index number. The delays allow the rover to receive corrections from all of the base stations at once on one ...

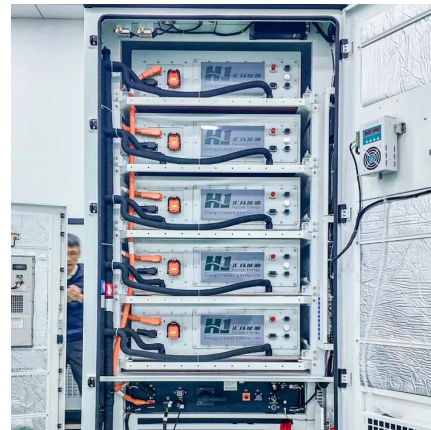
WhatsApp



What Are the Key Considerations for Telecom Batteries in Base ...

Telecom batteries for base stations are backup power systems that ensure uninterrupted connectivity during grid outages. Typically using valve-regulated lead-acid ...

[WhatsApp](#)



Connecting Your Arlo Camera to the Base Station: A ...

Understanding Arlo Cameras And Base Stations Before delving into the setup process, it's crucial to gain a clear understanding of what an Arlo camera and base station are ...

[WhatsApp](#)



Telecom Base Station Backup Power Solution: Design Guide for ...

Designing a 48V 100Ah LiFePO4 battery pack for telecom base stations requires careful consideration of electrical performance, thermal management, safety protections, and ...

[WhatsApp](#)





Battery as a primary power source in a base station setup

You will need to limit both the voltage AND the current from the power supply to use it as a charger for the battery, and you will have to actively monitor the battery's voltage while it ...

[WhatsApp](#)

Contact Us

For catalog requests, pricing, or partnerships, please visit:
<https://www.straightta.co.za>