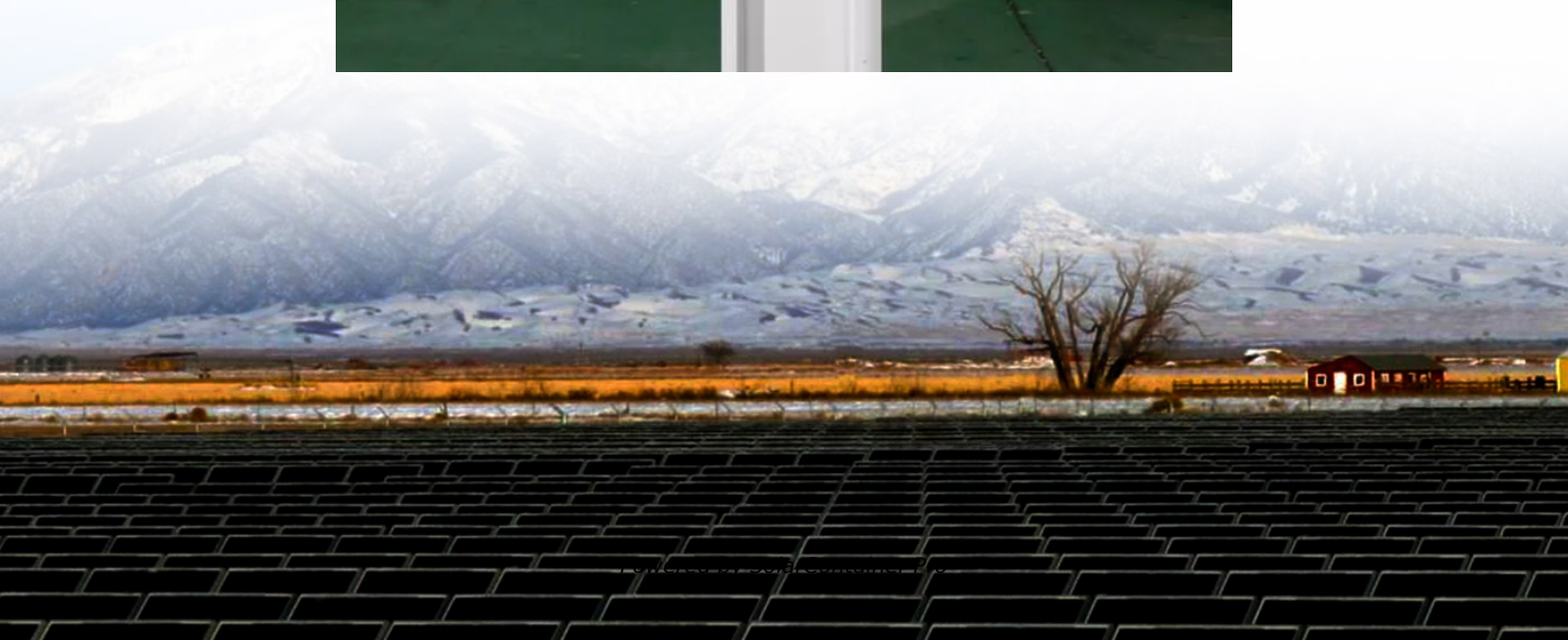


How to make a communication base station EMS





Overview

How do I select a EMS base station Radio?

To select a channel on an EMS base station radio, you should set the channel selector on the local primary channel as used in your area. The channel select button must be depressed in order to transmit on the selected frequency.

How does an EMS system work?

In some EMS systems, simple standard communications are transmitted by pushing a button on a mobile data terminal (MDT) mounted in the ambulance. Carry portable radio whenever you leave unit. Report must be given to destination hospital so it can prepare for arrival.

How does EMS radio communication work?

It may also convert the signal to a telephone signal and send the communications through public or dedicated telephone lines. EMS radio communication takes place in the VHF low band, VHF high band, and UHF band. VHF low band is the radio frequencies from 32-50 megahertz (MHz).

How does EMS rebroadcast a radio signal?

Some rebroadcast by converting signals to radio and others do so by converting to microwaves. It may also convert the signal to a telephone signal and send the communications through public or dedicated telephone lines. EMS radio communication takes place in the VHF low band, VHF high band, and UHF band.

What CTCSS tone do EMS med radios use?

For this reason, all New Mexico EMSCOM UHF radios on the EMS MED channels should be using CTCSS tone 136.5. Types of Stations: A base station transmits directly to mobiles and portables. If the base station is at some distance away from the operator, it is known as a remote base station.



How do you communicate with an EMS technician?

Give assessment information about your patient, but avoid offering a field diagnosis of the patient's problem. For example, say, "Patient complains of abdominal pain" rather than "Patient probably has appendicitis." Avoid slang or abbreviations that are not authorized. Use EMS frequencies for only authorized EMS communication.



How to make a communication base station EMS



[EMC410: Chapter 17 Communication and Documentation](#)

Study with Quizlet and memorize flashcards containing terms like What are the various communication systems?, What does the EMS radio system consist of?, What is the federal ...

[WhatsApp](#)

[EMS chapter 5 questions 1-25 Flashcards . Quizlet](#)

Study with Quizlet and memorize flashcards containing terms like The purpose of a communications system is to:, Which of the following statements regarding a base station is ...

[WhatsApp](#)



[Communications and Dispatching . Cooney's EMS Medicine](#)

Describe common terms used in radio communication to communicate the status of a unit. Describe an emergency department base station and list types of individuals who may be ...

[WhatsApp](#)



[Emergency Care, Fourteenth Edition, Chapter 17.](#)

In some EMS systems, simple standard communications are transmitted by pushing a button on a mobile data terminal (MDT) mounted



in the ambulance. Carry portable radio whenever you ...

[WhatsApp](#)



Chapter 2: Preparatory Part 2 - Emergency Medical Responder

Base Station: A stationary radio located in a strategic position, such as a hospital, dispatch center, or a high vantage point, enabling wide-area communication coverage.

[WhatsApp](#)



[chapter 5 post test Flashcards , Quizlet](#)

Study with Quizlet and memorize flashcards containing terms like Upon your arrival at the patient's side, with what style of question is it BEST to start your interview?, How should the ...

[WhatsApp](#)



[A GUIDE TO RADIO COMMUNICATIONS STANDARDS ...](#)

Instructions and general operating procedures presented in this Standard Operating Procedure (SOP) are applicable to all message traffic handling. All radio operators are encouraged to use ...

[WhatsApp](#)





[Application for Base Station Designation/Re-Designation](#)

1.2 Objectives The Base Station site review accomplishes three objectives. First, communication and site visits increase MIEMSS contact with EMS base station staf. Second, ...

[WhatsApp](#)



[Designing Fire And EMS Stations: A Comprehensive Guide](#)

This course was adapted from the U.S. Fire Administration, "Safety and Health Considerations for the Design of Fire and Emergency Medical Services Stations" which is in the public domain.

[WhatsApp](#)

Chapter 2: Preparatory Part 2 - Emergency Medical Responder

This section explores the key elements of communication in EMS, focusing on the technologies used, best practices for effective communication, and the importance of maintaining robust ...

[WhatsApp](#)



[Communications-EMT -- Hopper Institute®](#)

A base station is a radio operated from a fixed site such as a dispatch center, hospital, or some other location. It usually runs off community electrical power and transmits at much higher ...

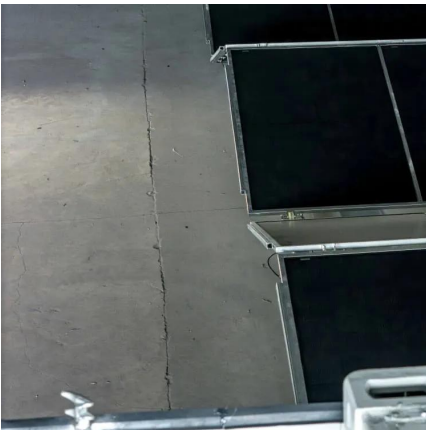
[WhatsApp](#)



[Office of the State EMS Medical Director](#)

Hospital Base Stations There are 47 Maryland hospital base stations designated by the EMS Board. All physicians and nurses who answer a base station call are required to successfully ...

[WhatsApp](#)



[Chapter 17 Posttest Flashcards , Quizlet](#)

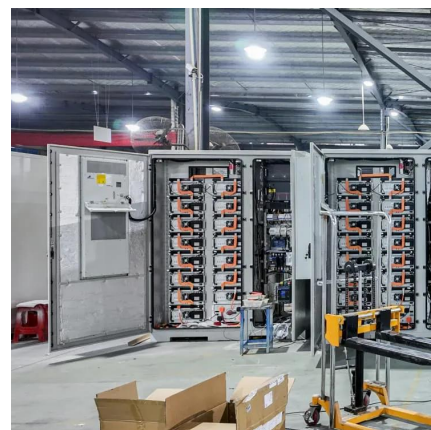
Study with Quizlet and memorize flashcards containing terms like When speaking during a radio transmission, you should:, The patient denying respiratory difficulty is an example of:, What ...

[WhatsApp](#)

[Chapter 5 Objectives Flashcards , Quizlet](#)

Discuss the purposes and characteristics of each component of a typical EMS communication system. Base station - A dispatch and coordination center. Land mobile radio systems - Land ...

[WhatsApp](#)





Contact Us

For catalog requests, pricing, or partnerships, please visit:
<https://www.straighta.co.za>