

How to erect the communication base station inverter





Overview

How do I connect my inverter to the Monitoring Platform?

Open SetApp and follow the on-screen instructions on your mobile device to connect to the inverter. In case the inverter is not connected to the monitoring platform via Ethernet or cellular, these instructions include setting up communications to the monitoring platform. 3.

What are the characteristics of different communication methods of inverters?

The characteristics of different communication methods of inverters are obvious, and the application scenarios are different. In order to better weave the underlying network of energy digitization and intelligent development, choose the most appropriate communication method according to local conditions.

How do I connect my inverter to my mobile device?

1. Turn ON the AC circuit breaker on the main distribution panel, if applicable turn ON the Safety Switch. *I n i t i a l i z i n g . .* 2. Open SetApp and follow the on-screen instructions on your mobile device to connect to the inverter.

Can a SSB antenna be used as a base station?

Yes, with a proper 12V DC power supply (3-5 amps minimum) and base antenna system. However, dedicated base stations typically offer better features, ergonomics, and performance for home use. Typical range is 15-25 miles for local communications. With SSB and optimal conditions, 50+ mile contacts are possible.

How does a low voltage inverter work?

The data signal is connected to the low-voltage busbar through the power line on the AC side of the inverter, the signal is analyzed by the inverter supporting the data collector, and the communication is finally connected to the local power station management system or the cloud platform through the



LAN or the Internet 2. Application scenario 4.

How to install an inverter cover?

Attach the inverter cover and secure it by tightening the screws with a torque of 3.0 N*m/ 2.2 lb.*ft. For proper sealing, first tighten the corner screws and then the two central screws. 1. Turn ON the AC circuit breaker on the main distribution panel, if applicable turn ON the Safety Switch. I n i t i a l i z i n g . .
2.



How to erect the communication base station inverter



Setting Up Your Ham Radio Station: A Step-by-Step Guide for ...

In summary, setting up your ham radio station involves connecting and configuring your transceiver and antenna, powering your station with an appropriate power supply, and properly ...

[WhatsApp](#)

How to Connect a Base Station Lithium Battery to an Inverter A ...

Connecting lithium batteries to inverters in base stations is critical for industries like telecommunications, renewable energy integration, and emergency power systems.

[WhatsApp](#)



Replacing and Upgrading an Inverter Communication Board ...

Open SetApp and follow the on-screen instructions on your mobile device to connect to the inverter. In case the inverter is not connected to the monitoring platform via Ethernet or ...

[WhatsApp](#)



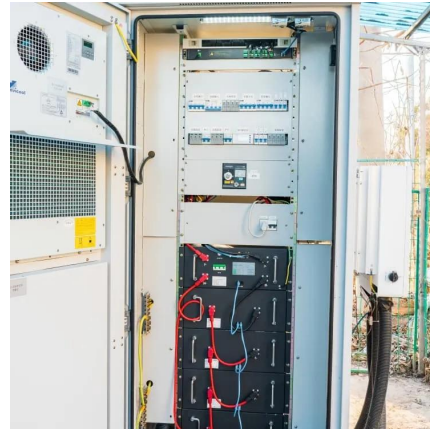
[Inverter communication mode and application scenario](#)

Serial inverters and energy storage inverters can be equipped with a data collector with a LAN port. The LAN port collector is connected to



network devices such as routers through network ...

[WhatsApp](#)



Mobile communication base station tower- Junhao Technology

At this point, the vehicle mounted base station can quickly rush to the disaster area, restore the communication network as soon as possible, and build a bridge for information communication ...

[WhatsApp](#)



Contact Us

For catalog requests, pricing, or partnerships, please visit:
<https://www.straighta.co.za>