

How to debug the inverter of the communication base station in the driving test





Overview

What should I do if my inverter is not working?

Fault during communication via system bus. Check system bus connection. Encoder signal for master faulty. Hardware required for synchronous operation is missing. Check encoder wiring. Fit a new synchronous operation board. Drive has reached position of CW limit switch. Interruption in line between inverter and CW limit switch.

How to reduce negative current in flyback topology?

The effect is also harmful to Flyback topology. The effect depends on dV/dt , C_{rss}/C_{iss} ratio, and driver strength to keep a high negative current. The solutions might be: to connect an external capacitance in parallel to C_{iss} , slow down dV/dt , or increase gate driver negative current capability (by adding an external PNP BJT for example).

How do I know if my inverter is bad?

Check connection between inverter and motor. Check cross section of motor cable and increase if necessary. Two or all output phases interrupted. Motor rated power too small in relation to inverter rated power. Check connection between inverter and motor. Check startup data and repeat startup procedure if necessary. Motor utilization too high.

What causes a systematic program error in an inverter?

Systematic program error caused by excessively frequent writing of CAN bus interface of an inverter. Reduce write accesses to inverter concerned in user program. Code 3: CAN controller overflow. CAN controller malfunction. Inform SEW Service if fault cannot be reset or if it occurs frequently. Code 4: CAN controller error.

How does Miller capacitance affect flyback topology?

2. Miller capacitance may cause uncontrollable parasitic switching, leading to



a cross-conduction failure in half-bridge topology. The effect is also harmful to Flyback topology. The effect depends on dV/dt , C_{rss}/C_{iss} ratio, and driver strength to keep a high negative current.



How to debug the inverter of the communication base station in the



How to debug your hybrid inverter

Solis is one of the world's largest and most experienced manufacturers of solar inverters supplying products globally for multinational utility companies, commercial & industrial rooftop ...

[WhatsApp](#)

How to debug your hybrid inverter

Established in 2005, Ginlong (Solis) (Stock Code: 300763.SZ) stands as the world's third-largest PV inverter manufacturer. As a global provider of solar and energy storage solutions catering ...

[WhatsApp](#)



Siemens S7-200 SMART and G120 inverter Modbus communication

The connection between the communication port and the inverter slave station is shown in Figure 2-2. Terminating resistors are required at the beginning and end of the ...

[WhatsApp](#)



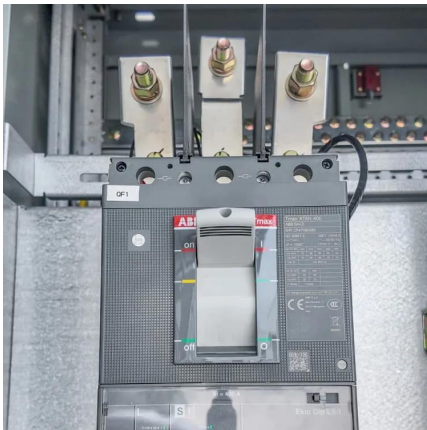
[Troubleshooting Inverter Communication Error with PLC](#)

Learn how to diagnose and resolve communication errors between an inverter and an external PLC, covering physical,



communication settings, network, protocol, firmware, diagnostics, ...

[WhatsApp](#)



[Troubleshooting RS485 / Modbus RTU Wiring](#)

Basic Checks for No-response from slave error: Check that communication settings parameters are correct (baud rate, etc). Check for reversed polarity on RS485 lines. If uncertain, just try ...

[WhatsApp](#)

[How to Fix a Power Inverter? , inverter](#)

Replace any blown fuses with the appropriate rating and type. Refer to the inverter's manual for the location of the fuses. Test the inverter without a load. Disconnect any devices ...

[WhatsApp](#)



[i7 and clean base communication problem SOLVED!! : r/roomba](#)

Discover the world of Roomba and robotic vacuums at r/roomba! This official community-driven subreddit is your go-to destination for tips, troubleshooting, and discussions related to Roomba ...

[WhatsApp](#)





Contact Us

For catalog requests, pricing, or partnerships, please visit:
<https://www.straighta.co.za>