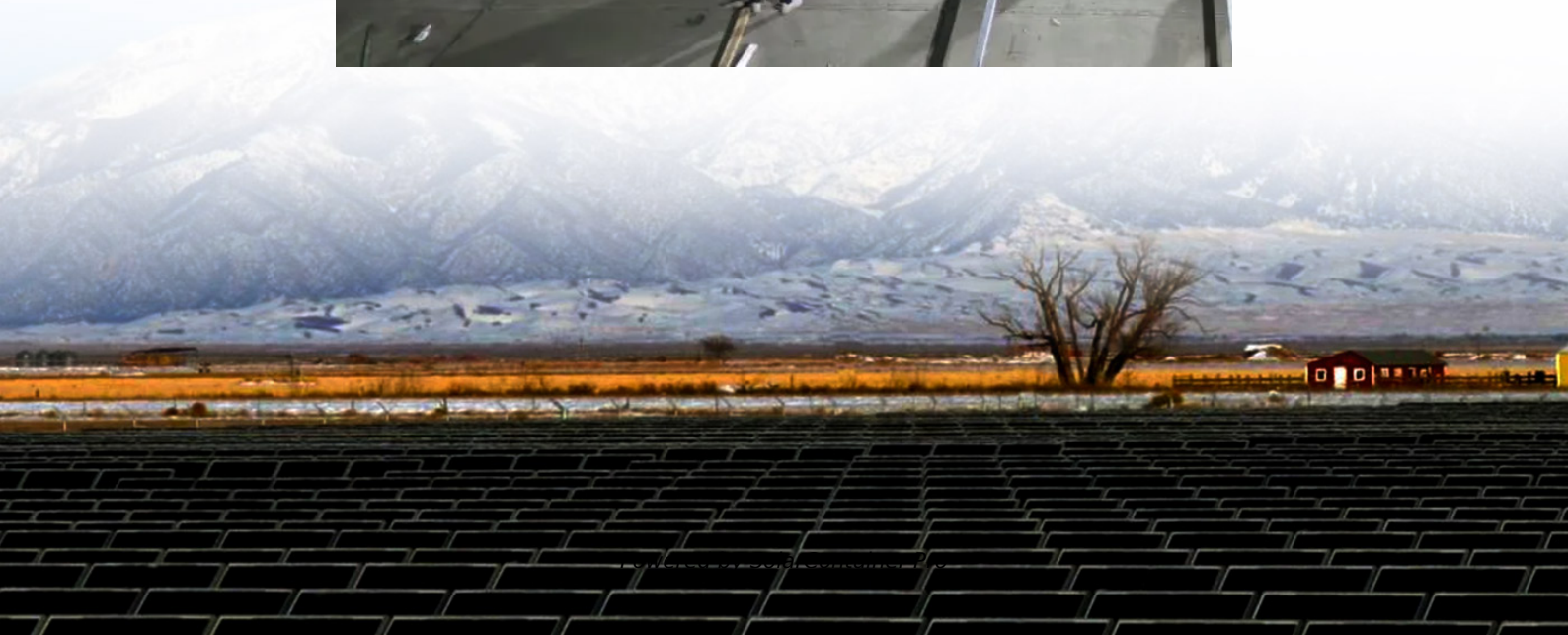


How to control the battery cabinet current





Overview

How do you connect a battery to a cabinet?

Route the ground bond wiring from the battery cabinet's ground bond bolt, through the cabinet-to-cabinet wiring pass through to the adjacent cabinet's ground bond bolt. 9. Connect the ground bonding wiring to the bolt and torque the ground bond wiring bolts to 10 Nm (7.38 lb-ft).

What clearances are required around a battery cabinet?

The clearances required around the cabinets are to be followed from UPS ("Installation Plan" section) and battery cabinet manuals ("Installation Plan and Unpacking" section). As a result of the connected loads high leakage current is possible. Connection to earth ground is required for safety and proper product operation.

How do I wire the Eaton Samsung Gen 3 battery cabinets?

Only one ground conductor is required in each conduit. Use this procedure to wire the Eaton Samsung Gen 3 Battery Cabinets to the UPS cabinet. To install wiring to connections: Verify the UPS system is turned off and all power sources are removed. Refer to the applicable UPS Installation and Operation manual for UPS operating procedures.

What is the difference between a ups and a battery cabinet?

The UPS is available in 50 or 60 Hz with various output power ratings while the battery cabinet is available with 16 battery modules. The table below depicts the system model numbers and the stored energy capacity of the system. The End of Discharge Voltage limit for each battery cabinet for all models is 400.8V DC. Table 3.

What is a Battery Control Unit (BCU)?

Each battery cabinet is equipped with a Battery Control Unit (BCU). A BCU includes a Moulded Case Circuit Breaker (MCCB), fuses (for short circuit



protection), relays (for charge and pre-charge protection), and a battery management system that monitors and protects the battery string in the cabinet.

How do I protect my Eaton battery?

Consult Eaton for storage items, cycles and periods. Circuit breakers, such as MCCBs, should be installed between the battery system and power converters. To prevent battery damage from transient voltage surges, protective devices such as an SPD could be installed. The SPD should be UL1449 certified and meet the following specifications.



How to control the battery cabinet current



[Eaton 93PM L \(208V\) UPS and Samsung Gen 3 Battery ...](#)

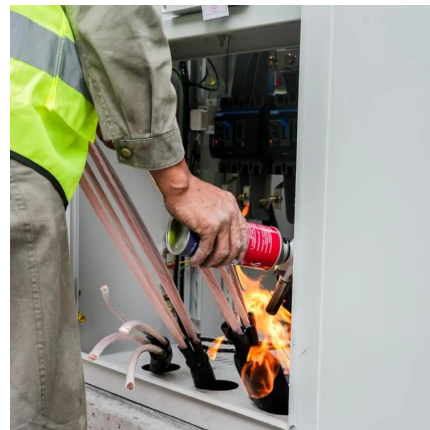
The installation manuals of the UPS and battery cabinet describe how to install and operate the Eaton 93PM-L (208V) UPS and battery cabinets. Read and understand the procedures ...

[WhatsApp](#)

[Guidelines for Current Transformer \(CT\) installation](#)

Use cases for CT installation The CT measurements provide valuable system information to the installers and homeowners about PV production, home consumption, and IQ Battery ...

[WhatsApp](#)



Battery Cabinet Solutions: Ensuring Safe Storage and Charging ...

Lithium-ion batteries are essential in powering tools, devices, and energy systems across industries, but they also come with inherent fire and explosion risks. To address these ...

[WhatsApp](#)



Energy Storage System Basis: What Are Energy Storage Cabinet?

The energy storage cabinet comprises the following parts: 1-Battery module: This is the core component of the energy storage system



and stores electrical energy. Common battery ...

[WhatsApp](#)



Operation of Energy Storage Battery Cabinets on the Grid Side

Energy storage battery cabinets are integral components of energy storage systems. Their operation on the grid side involves energy charge/discharge management, ...

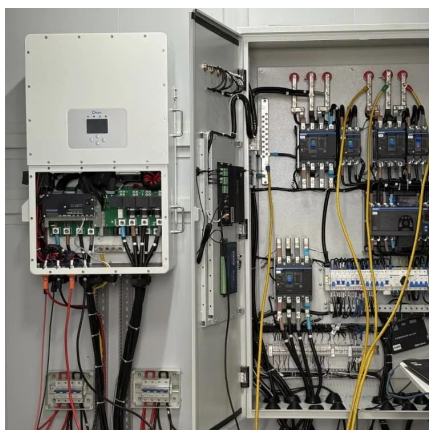
[WhatsApp](#)



How to control the output current of the energy storage cabinet

A battery is a Direct Current (DC) device and when needed, the electrochemical energy is discharged from the battery to meet electrical demand to reduce any imbalance between ...

[WhatsApp](#)



What control is used for energy storage cabinet , NenPower

Battery Management Systems are specifically designed to monitor battery health, temperature, voltage, and current levels. This ensures that each individual cell operates within ...

[WhatsApp](#)



How to adjust the voltage and current of the battery cabinet

There is a wide range of CCCV charging techniques presented in the literature, such as switching between battery current and voltage control modes depending on the battery terminal voltage

[WhatsApp](#)



[Maintaining Compliance in the VRLA Battery Room](#)

Introduction Battery room compliance can be interpreted differently depending on your battery type, amount of cells or multi-cell units in a common area, volume of electrolyte and voltage ...

[WhatsApp](#)

[SL-71958 Vertiv Liebert® APM2 UL EBC User Manual](#)

The Liebert® APM2 Battery Cabinet is designed to be connected to Liebert® APM2 Battery Cabinet to provide a line-up with all interconnected power and control wiring.

[WhatsApp](#)



BC58 Battery Cabinet Installation, Operation, & Maintenance ...

The option provides functional access to the equipment circuit breaker via a handle located on the exterior of a cabinet door that is physically connected to the circuit breaker in the cabinet's ...

[WhatsApp](#)



Contact Us

For catalog requests, pricing, or partnerships, please visit:
<https://www.straighta.co.za>