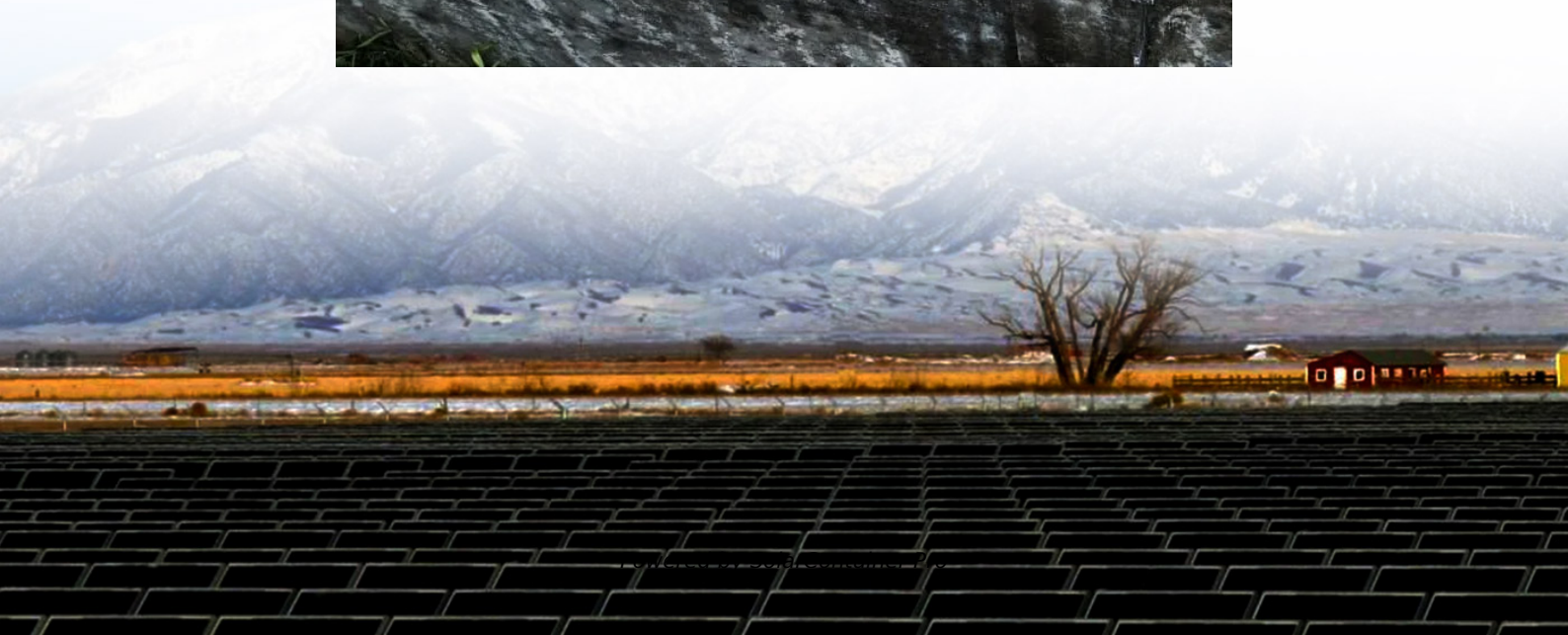


# **How to connect the power supply of home base station**





## Overview

---

Start by connecting your base station CB radio to an external power supply, typically 120V AC, ensuring proper grounding for safety. Double-check connections to avoid electrical issues or surges. Attach the antenna securely to your CB radio using a high-quality coaxial cable. Should you set up a home base station?

Setting up a home base station for your CB radio can provide several benefits. You can stay connected with friends and family, monitor emergency channels, and be better prepared for any situation. While it might seem daunting, setting up a CB base station is actually a simple and straightforward process.

How do I install a base station CB system?

Base Station CB systems are not complicated to install, but there are a few things you should know. So, let's get into it. First, you need a radio system that works off of AC power. Most CB radios are designed for vehicles that are powered by DC 12-volt power systems.

What are the components of a base station CB system?

Remember, the longer the CB antenna, the more potential range that you will have. The basic components for a Base Station CB System include a CB radio, power supply (if you are using a mobile CB radio instead of a base station CB radio), coax, and an antenna.

Do base stations need a power supply?

**Power Requirements:** Base stations operate on 120V AC power rather than 12V DC, requiring either built-in power supplies or separate AC-to-DC converters. **Size and Ergonomics:** Designed for desktop use, these radios feature full-size controls, making operation more comfortable during extended sessions.

Do base station transceivers need a power supply?



Most base station transceivers require an external AC power supply, providing a stable source of 12-14 VDC. Choose a power supply with a sufficient amperage rating to support your transceiver and any additional equipment, such as amplifiers. For mobile or emergency situations, consider using batteries or solar power as alternatives.

Does a CB radio come with a power supply?

With your CB radio in place, you can connect the cables from both the power supply and the antenna. One key aspect of maximizing the signal and range of your home base CB radio is to adjust your antenna's height.



## How to connect the power supply of home base station

---



### [Setting Up Your CB Radio / Antenna - Easy CB Radio](#)

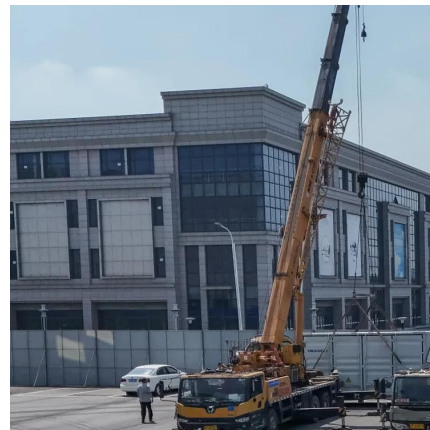
To get started with your CB radio you will need to hook the CB up to a power supply and an antenna via a length of coaxial cable (see our buying guide page for recommendations for ...

[WhatsApp](#)

### **How to convert a mobile radio to a home base station? : r/gmrs**

You can connect to the radio to a battery, then use a battery charger or solar panel (during the day of course) to charge it back up. This allows for use even when the power is out.

[WhatsApp](#)



### **How to build a Simple Battery Backup Power Station for Emergency Power**

Whether you're facing a natural disaster or a long-term power outage, this battery backup power station will ensure you have the necessary power to survive. A workbench is used to house ...

[WhatsApp](#)



### **Setting Up Your Ham Radio Station: A Step-by-Step Guide for ...**

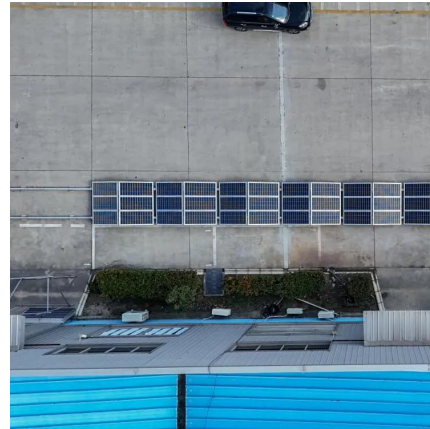
Most base station transceivers require an external AC power supply, providing a stable source of 12-14 VDC. Choose a power supply





with a sufficient amperage rating to support your ...

[WhatsApp](#)



### **CB Radio Base Station Equipment Recommendations and Advice**

The basic components for a Base Station CB System include a CB radio, power supply (if you are using a mobile CB radio instead of a base station CB radio), coax, and an antenna. The article ...

[WhatsApp](#)

## **Contact Us**

---

For catalog requests, pricing, or partnerships, please visit:  
<https://www.straighta.co.za>