

# How to connect the battery to an indoor small base station





## Overview

---

How do you replace a battery in a base station?

To replace batteries in a SimpliSafe base station, rotate the base counterclockwise (CCW) to remove it, then remove the batteries and replace them while ensuring the (-) and (+) orientation. When disposing of NiMH batteries, they should be recycled.

How many batteries does the base station take?

The Base Station takes four (4) 1.2V, 1300mAh nickel-metal hydride (NiMH) rechargeable batteries. Regular alkaline batteries should never be inserted into the Base Station, as they may damage the device. Once you have acquired the necessary NiMH rechargeable batteries, you can follow the steps below to replace them:.

Can you put alkaline batteries in a base station?

NEVER insert regular alkaline batteries into the Base Station as they may damage the device. Plug your Base Station back into power. Was this helpful?

Does your Keypad look like the one pictured to the left?

.

What type of batteries are used in the base station?

Inside the bottom of the base station are QTY (4) AA nickel-metal hydride rechargeable batteries (abbreviated NiMH or Ni-MH). Note, being RECHARGEABLE, there is a good chance that if you just keep the power on for several hours, they will be recharged.

How do you remove a NiMH battery from a base station?

Remove the power plug from the bottom of the base station to expose one screw. Remove the screw, rotate the base counterclockwise, and it will pull



off. Remove the NiMH batteries and replace them while ensuring the correct (-) and (+) orientation. When disposing of NiMH batteries, they should be recycled.

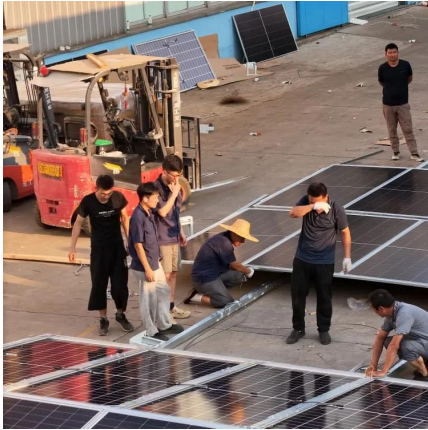
How do you remove a battery from a base station?

Unplug the Base Station. You don't want to start fiddling with the device while it is plugged in. Turn the device upside down and locate the battery compartment at the device's base. Unscrew the battery compartment and pull out the protective casing. The battery should be lying inside.



## How to connect the battery to an indoor small base station

---



### Gigaset C385

⌘ First insert the battery cover at the top a. ⌘ Then press the cover b until it clicks into place. If you need to open the battery cover, for instance to replace the batteries, place your fingertip in the ...

[WhatsApp](#)

### Battery as a primary power source in a base station setup

You will need to limit both the voltage AND the current from the power supply to use it as a charger for the battery, and you will have to actively monitor the battery's voltage while it ...

[WhatsApp](#)



### How To Replace Base Station Batteries , SimpliSafe Support Home

Regular alkaline batteries should never be inserted into the Base Station, as they may damage the device. Once you have acquired the necessary NiMH rechargeable batteries, you can ...

[WhatsApp](#)

### Am needing help with connecting ROKU Camera Model CW100BX Base Station

To connect the CX100BX camera, first ensure the base station is powered and within range. Press the sync button on the base station until the LED



blinks, then activate pairing mode on ...

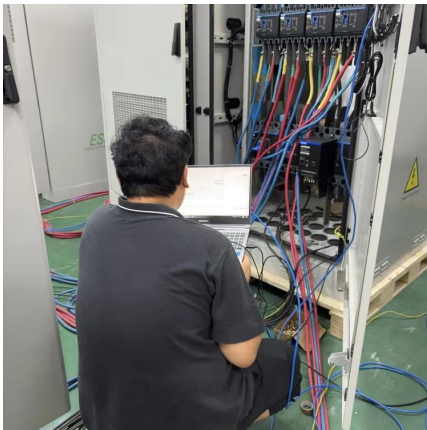
[WhatsApp](#)



### **?Changing batteries in base station , SimpliSafe Support Home**

We can replace those batteries with actual NiMH rechargeables at no cost! It's actually pretty simple. You have to remove the power cord which will reveal a single screw on ...

[WhatsApp](#)



### **Why am I unable to connect my new Arlo Essential Camera (2nd ...**

Initial Installation 2nd Generation Arlo Essential Cameras and 2nd Generation Arlo Video Doorbells may not allow for installation to an Arlo SmartHub or Base Station on the ...

[WhatsApp](#)



### **[Setting Up and Using Your Ring Alarm Pro Base Station](#)**

Setting Up and Using Your Ring Alarm Pro Base Station The Ring Alarm Pro Base Station is designed to be the hub of your home, with a Ring Alarm security system, an eero Wi-Fi 6 ...

[WhatsApp](#)







## Small Cells, Big Impact: Designing Power Solutions for 5G ...

When a mobile device is close to a small-cell base station, the power needed to transmit the signal is much lower compared to the power needed to transmit a signal from a cell tower far ...

[WhatsApp](#)



## 12 Volt Lead-Acid Battery + Trickle Charger to Power Base-Station

For my battery backup system, I use four 6v golf cart batteries wired in series for 24v and leave them in my garage where I am more comfortable charging them. From there, ...

[WhatsApp](#)

## 23 Ring Base Station Common Questions (Solved)

Gently remove the battery from the compartment, watching the connecting wires connecting the battery to the base station. Do not fully try to remove the battery without first ...

[WhatsApp](#)



## Contact Us

For catalog requests, pricing, or partnerships, please visit:  
<https://www.straightta.co.za>