

# **How to connect the battery cabinet and the cabinet**





## Overview

---

How do you connect a battery to a cabinet?

Route the ground wire (from the field kit) from the ground stud in one battery cabinet, under the lower battery tray and through the cabinet-to-cabinet cable access area in the side of the cabinets, and attach to the ground stud in the other battery cabinet (see Figure 4-4). Hardware is provided on each ground stud.

How do you reinstall a battery cabinet?

Reinstall the left side panel on the left-most battery cabinet after interconnection. Push the third battery cabinet into position, align with the seismic anchoring (if any), level the battery cabinet, and interconnect with the other battery cabinets as described in step 2, step 3, and step 5.

Where should a battery cabinet be installed?

If the battery cabinet is installed adjacent to the UPS, the recommended installation location for the battery cabinet is on the right side of the UPS cabinet. This location will allow for future expansion using an external module. Cabinets can be permanently bolted to the floor or left standing on leveling feet.

How is a ups cabinet installed?

Each cabinet in the battery system is placed in its correct location. cabinet grounding/mounting kit is installed between any cabinets that are bolted together. ground wire is installed between all cabinets. All conduits and cables are properly routed to the battery cabinets. ground conductor is properly installed to the UPS cabinet.

How do you level a battery cabinet?

Remove the side panels that are adjacent to the other battery cabinets. Push the right-most battery cabinet into position. For seismic anchoring, ensure



that the rear seismic bracket connects to the rear anchors. Lower the levelling feet until they connect with the floor - use a bubble-leveler to ensure that the cabinet is level.

How do I connect a 1085hr battery to a mating cabinet?

Connect the top and bottom tray connectors to the mating cabinet connectors to complete the battery string connections (see Figure 4-13). **FOR 1085HR ONLY:** Connect the string of battery trays by mating the loose black connector with the blue locking mechanism from each tray to the fixed black connector mounted on the front edge of the tray below.



## How to connect the battery cabinet and the cabinet

---



### [Vertiv™ Liebert® ITA2 Battery Cabinet](#)

Connect a battery cable to Connector B on the first cabinet in the previous string, and to Connector A on the first cabinet in the additional string. Connect the second string in additional ...

[WhatsApp](#)

### Installation of 6-slot Enclosed Battery Cabinet with Busbar

Welcome to SUNGOLDPOWER's installation video for our new battery cabinets! This video provides a complete overview of the accessory components and a detailed step-by-step ...

[WhatsApp](#)



### Outdoor Battery Cabinet Guide: IP Ratings, Cooling & Selection

2 days ago · Discover how to choose the right outdoor battery cabinet with insights on IP ratings, cooling methods, and design factors to ensure safe and reliable energy storage.

[WhatsApp](#)

### Does the battery charging cabinet dissipate heat How to use it

The safety of battery charging cabinets depends on several factors, including the quality of the cabinet, compliance with safety standards and



regulations, and proper use and maintenance. ...

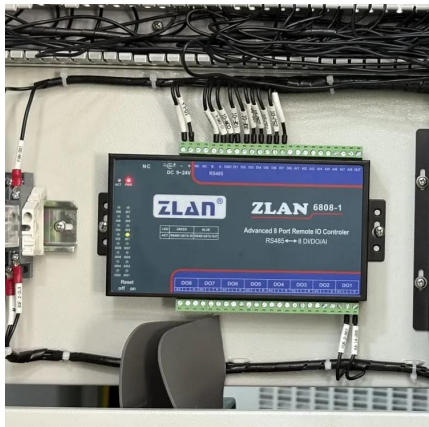
[WhatsApp](#)



### How to correctly install lithium battery energy storage cabinet?

In this guide, we will introduce the correct installation steps after receiving the lithium battery energy storage cabinet, and give the key steps and precautions for accurate ...

[WhatsApp](#)



### The Ultimate Guide to Energy Storage Cabinet Installation Steps ...

You've just unboxed your shiny new energy storage cabinet, and suddenly realize it's about as easy to assemble as IKEA furniture without the pictograms. This guide is your lifesaver if you're:

[WhatsApp](#)



### [How to Install Under Cabinet Lighting in Your Kitchen](#)

Introduction Add undercabinet lighting to existing kitchen cabinets. This unique method of wiring undercabinet lights eliminates disruptive wall tear-out and minimizes the ...

[WhatsApp](#)



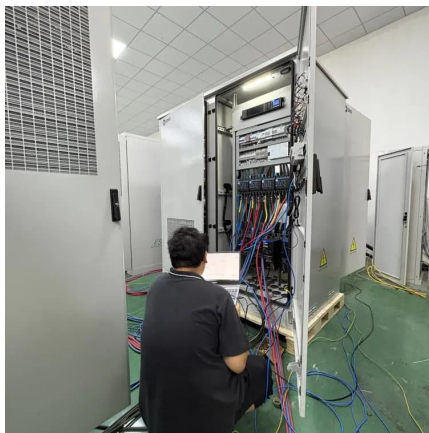




### [RBB Accessory Cabinet Installation Instructions](#)

However, any other cabinet knock-outs (on either the main control panel or the RBB cabinet), that are not previously being used may be utilized to connect conduit between the two cabinets. ...

[WhatsApp](#)



### **Liebert® EXS External Battery Cabinet Installer/User Guide**

For battery cabinets that are connecting to a Vertiv™ Liebert® EXS UPS, see Figure 2.1 on page 8, cables will run from the positive, negative and neutral busbars of the adjacent battery ...

[WhatsApp](#)

### [Liebert® ITA2 Battery Cabinet Installer/User Guide](#)

The battery cabinet may be installed in a rack or tower configuration, and a maximum of five battery strings can be connected to the UPS. When introduced, the battery cabinet was 3U ...

[WhatsApp](#)



## **Contact Us**

---

For catalog requests, pricing, or partnerships, please visit:  
<https://www.straightta.co.za>