

How to connect the base station to the battery





Overview

How many batteries does the base station take?

The Base Station takes four (4) 1.2V, 1300mAh nickel-metal hydride (NiMH) rechargeable batteries. Regular alkaline batteries should never be inserted into the Base Station, as they may damage the device. Once you have acquired the necessary NiMH rechargeable batteries, you can follow the steps below to replace them:.

How do I replace the base station's backup battery?

To replace the base station's backup battery, follow the steps below: Unplug the Base Station. You don't want to start fiddling with the device while it is plugged in. Turn the device upside down and locate the battery compartment at the device's base. Unscrew the battery compartment and pull out the protective casing.

Can you put alkaline batteries in a base station?

NEVER insert regular alkaline batteries into the Base Station as they may damage the device. Plug your Base Station back into power. Was this helpful?

Does your Keypad look like the one pictured to the left?

.

Do I need to replace my base station's batteries?

If you're not certain which system you have, see the Which Version of the SimpliSafe® System Do I Have article. You will likely never need to replace your Base Station's batteries as they are rechargeable and meant to last. The Base Station takes four (4) 1.2V, 1300mAh nickel-metal hydride (NiMH) rechargeable batteries.

How do you remove a battery from a base station?



Unplug the Base Station. You don't want to start fiddling with the device while it is plugged in. Turn the device upside down and locate the battery compartment at the device's base. Unscrew the battery compartment and pull out the protective casing. The battery should be lying inside.

How do I connect my base station to the Internet?

You can connect your Base Station to the internet using wifi or an Ethernet cable. (Note: You can't use both wifi and Ethernet at the same time, but you can change the connection at any time.) Before you begin, download the Ring app and set up an account. Also make sure you have your wifi network name and password, or an ethernet cable.



How to connect the base station to the battery



[Setting Up and Using Your Ring Alarm Pro Base Station](#)

If you add one or more Ring Power Packs, your Alarm Pro Base Station will have full Ring Alarm and eero wifi functionality. Each Power Pack will give you up to 8 hours of power, or more.

[WhatsApp](#)

Can I Use Arlo Pro 2 Without Base Station? Here's What You ...

When it comes to home security systems, the Arlo Pro 2 has become increasingly popular due to its versatility, easy setup, and long-lasting battery life. But what happens if you dont have a ...

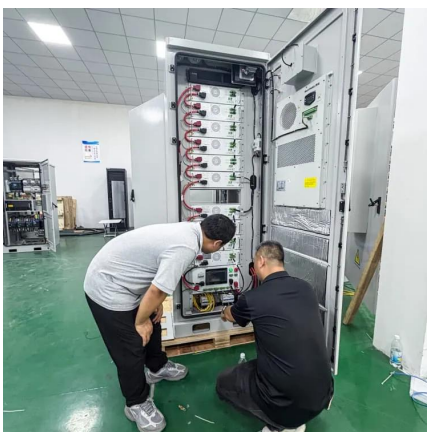
[WhatsApp](#)



[Setting Up Your Ring Alarm Base Station](#)

Ring Alarm and select your Base Station. Select a location, or add a new one. Follow the in-app instructions to complete setup. When prompted, press the PAIRING button on the rear of your ...

[WhatsApp](#)



[Issues with base station not powering on : r/simplisafe](#)

I realized this week that my base station was not powered on, despite being plugged in. I never received a notification of any sort. I tried all of



their suggested troubleshooting (removing a ...

[WhatsApp](#)



[23 Ring Base Station Common Questions \(Solved\)](#)

Gently remove the battery from the compartment, watching the connecting wires connecting the battery to the base station. Do not fully try to remove the battery without first ...

[WhatsApp](#)



[Setting Up and Using Your Ring Alarm Pro Base Station](#)

Setting Up and Using Your Ring Alarm Pro Base Station The Ring Alarm Pro Base Station is designed to be the hub of your home, with a Ring Alarm security system, an eero Wi-Fi 6 ...

[WhatsApp](#)



[Base Station \(Gen 3\) Overview and Installation Guide](#)

Only use NiMH Rechargeable Batteries - never insert regular, alkaline batteries into your Base Station! Watch this video from our team of experts for a hands-on installation experience

[WhatsApp](#)





[Building a MOON AIRLOCK and STATION BATTERY](#)

In this episode of Stationeers, we set up our first station battery, and get a basic moon airlock working! I'm working towards our first hydroponics setup so these are great steps along the road

[WhatsApp](#)



Can You Charge Astro A50 Without the Base? Everything You ...

The base station connects to the headset via a micro USB cable, which allows for the transfer of power from the station to the headset's battery. This means that without the ...

[WhatsApp](#)

Gigaset C385

✕ Insert the batteries the right way round. The polarity is indicated in/on the battery compartment. ✕ First insert the battery cover at the top a. ✕ Then press the cover b until it clicks into place.

[WhatsApp](#)



[Upgrading or Replacing Your Ring Alarm Base Station](#)

We've made it easier to replace and upgrade your Base Station from a Ring Alarm to the Ring Alarm Pro version. The app will help you save all of your existing Ring Alarm devices and ...

[WhatsApp](#)



[How to Reset the Base Station , SimpliSafe Support Home](#)

When troubleshooting your system, there may come a time when you need to reset your Base Station to clear out any errors. Before Getting Started You'll need to be able to access the ...

[WhatsApp](#)



How To Replace Base Station Batteries , SimpliSafe Support Home

Regular alkaline batteries should never be inserted into the Base Station, as they may damage the device. Once you have acquired the necessary NiMH rechargeable batteries, you can ...

[WhatsApp](#)



[Setting up your Ring Alarm Base Station](#)

Setting up your Ring Alarm Base Station Stay in control of your home from anywhere with the central hub of your alarm system -- the Ring Alarm Base Station. Connect all of your Ring ...

[WhatsApp](#)





Contact Us

For catalog requests, pricing, or partnerships, please visit:
<https://www.straighta.co.za>