

How to connect new energy battery cabinets in parallel





Overview

How do I connect batteries in parallel?

Follow these steps to safely connect batteries in parallel: Prepare the Batteries: Ensure all batteries are of the same voltage and capacity. Fully charge all batteries to the same state. Connect the Positive Terminals: Use a high-quality cable to connect the positive terminal of the first battery to the positive terminal of the next battery.

What happens if you connect 3 batteries in parallel?

When you connect batteries in parallel, like connecting 3 batteries in parallel, you are connecting batteries to ramp up the amp-hour capacity. The connection capacity will increase, but the voltage will not. For instance, connecting four 12-volt 100Ah batteries will provide a 12V 400Ah battery supply.

Can you connect lithium batteries in parallel?

There are ways to connect lithium batteries in parallel to double capacity while keeping the voltage the same. This means two 12V 120Ah batteries wired in parallel will give you only 12V. But increases capacity to 240Ah. Connecting your lithium batteries in parallel requires some preparation to ensure you don't do any expensive damage.

How do parallel batteries work?

The basic concept is that when connecting in parallel, you add the amp hour ratings of the batteries together, but the voltage remains the same. For example: two 6 volt 4.5 Ah batteries wired in parallel are capable of providing 6 volt 9 amp hours (4.5 Ah + 4.5 Ah).

Should batteries be wired in parallel?

Wiring batteries in parallel is a common practice to increase capacity and extend the runtime of battery-powered systems, such as in solar systems and



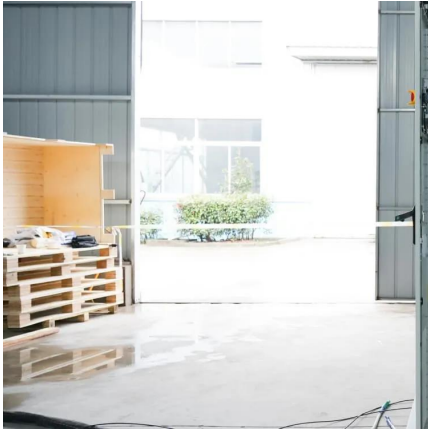
off-grid applications. However, this setup comes with certain risks that, if not managed correctly, can lead to reduced battery life, uneven performance, or even safety hazards.

Can enerdrive run lithium batteries in parallel?

Enerdrive supports running its B-TEC batteries lithium batteries in parallel. It recommends a maximum battery bank size of four lithium batteries of equal voltage and amperage. For example, you can connect two 200Ah lithium batteries in parallel. Invicta also allows up to 4 batteries in parallel.



How to connect new energy battery cabinets in parallel



Wiring Batteries in Parallel: Understanding the Dangers and ...

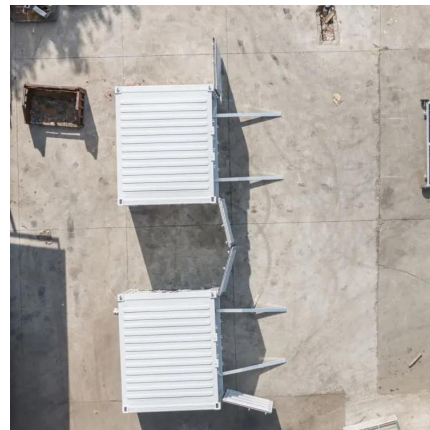
Wiring batteries in parallel is a common practice to increase capacity and extend the runtime of battery-powered systems, such as in solar systems and off-grid applications. ...

[WhatsApp](#)

Batteries In Parallel: Maximize Power And Efficiency In Your Setup

Learn how to connect batteries in parallel to maximize power and efficiency in your setup. This guide covers the benefits of parallel battery configurations, including increased ...

[WhatsApp](#)



3 Batteries in Parallel: How To Connect Batteries in Parallel

When this happens, you can connect batteries in a parallel, series or series-parallel fashion to increase the amp-hour capacity, voltage or both. In this article, we've discussed how ...

[WhatsApp](#)

Connecting Lithium Batteries in Parallel: What You Need to Know

Connecting your lithium batteries in parallel requires some preparation to ensure you don't do any expensive damage. Before you connect



your batteries always consult the ...

[WhatsApp](#)



How to Connect Two 12V Lithium Batteries in Parallel , Wild Yak Battery

Explore our comprehensive guide on how to connect two 12V lithium batteries in parallel. Get step-by-step instructions, safety tips, and learn how Wild Yak Battery's 12V 100Ah and 12V ...

[WhatsApp](#)



Connecting batteries in parallel - BatteryGuy Knowledge Base

The basic concept is that when connecting in parallel, you add the amp hour ratings of the batteries together, but the voltage remains the same. For example: two 6 volt 4.5 Ah ...

[WhatsApp](#)



Connecting batteries in parallel - BatteryGuy Knowledge Base

Curious about how to safely and efficiently connect batteries in parallel? ? This method increases capacity while maintaining voltage, making it perfect for

[WhatsApp](#)

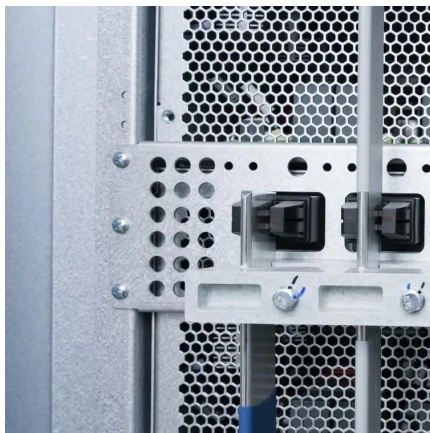
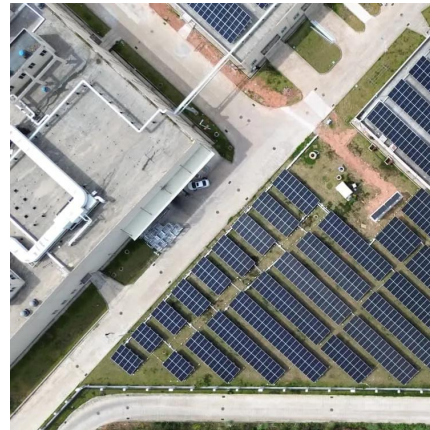




How to Configure LiFePO4 Batteries in Parallel: A Step-by-Step ...

Configuring LiFePO4 batteries in parallel is an effective way to increase battery capacity while maintaining the same voltage. This setup is widely used in solar energy ...

[WhatsApp](#)



[Wiring Batteries in Parallel: Boost Your Power Capacity](#)

Wiring batteries in parallel is a technique that allows you to increase your power capacity by combining multiple batteries. By connecting the positive terminals together and the negative ...

[WhatsApp](#)

[How To Connect Batteries In Series & Parallel](#)

Whether you are setting up an off-grid solar system, creating an RV power system, or developing a backup system, understanding how series and parallel connections work and ...

[WhatsApp](#)



Contact Us

For catalog requests, pricing, or partnerships, please visit:
<https://www.straightta.co.za>