

# How to choose an inverter for 300V lithium battery





## Overview

---

Answer: To choose the right inverter for lithium batteries, match the inverter's voltage and capacity to your battery's specifications, prioritize pure sine wave inverters for efficiency, ensure compatibility with lithium battery chemistry, and factor in safety features like overload protection. Which battery should I use for my inverter?

When it comes to powering your inverter, there are a few alternative options to consider aside from lithium batteries. While lithium batteries have gained popularity due to their numerous advantages, they may not be the right choice for everyone. One alternative option is lead-acid batteries.

Are inverters compatible with lithium batteries?

Understanding the basics of inverters and different battery options sets the stage for exploring the compatibility between inverters and lithium batteries. Lithium batteries have revolutionized the world of inverters, offering a range of advantages that make them an ideal choice for powering these devices.

How much battery does a home inverter need?

For example, if your total power requirement is 170 watts and you need it for 6 hours, a battery capacity of 150 Ah should work well. If you need help determining the right battery, use an inverter battery calculator to find out how much Ah battery is required for a home inverter.

What is an inverter & a battery?

Let's start with inverters. An inverter is essentially a device that converts DC (direct current) power into AC (alternating current) power, allowing you to use your electronic devices when there is no grid electricity available. Now let's talk about batteries.

How to choose a good inverter?

Hence, in our situation, we should look for an inverter around 250 VA. The key



takeaway is choosing an inverter that can handle more than your calculated needs. This improves performance and extends the life of your inverter and connected appliances. A proper battery is the backbone of an inverter.

What size inverter do I Need?

Small Apartment: A 250 VA inverter for a home with a 100 Ah battery can comfortably handle basic appliances like fans, lights, and a TV. Medium-Sized Home: A 500 VA inverter with a 150-200 Ah battery would be ideal for running additional appliances like a refrigerator or multiple fans.



## How to choose an inverter for 300V lithium battery

---



### [Can all inverters use lithium batteries?](#)

In this article, we'll be diving into the compatibility between inverters and lithium batteries, exploring their advantages, factors to consider when choosing an inverter for lithium ...

[WhatsApp](#)

### **Best Inverter For Lithium Ion Battery [Updated: August 2025]**

After trying out several options, I found the Dewalt 350W Battery Power Inverter with USB, Type-C, DC, and LED truly stands out. Its multiple ports and built-in safety ...

[WhatsApp](#)



### **Best Inverters for Lithium Batteries to Power Your Off-Grid and ...**

Choosing the best inverter for lithium batteries is essential to maximize the efficiency and safety of your off-grid or backup power systems. Inverters convert the DC power ...

[WhatsApp](#)

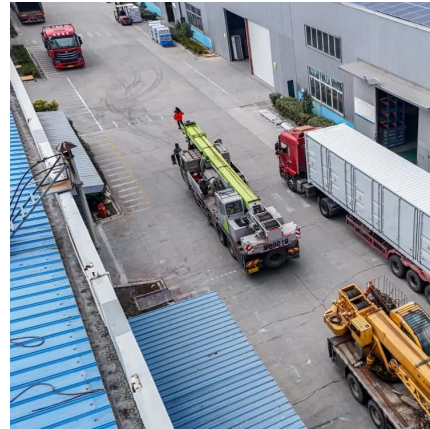


### [Which inverter is best for lithium batteries?](#)

The best inverter for lithium batteries is a pure sine wave inverter with high efficiency, robust protection features, and compatibility tailored to lithium battery characteristics.



[WhatsApp](#)



### Best Inverters for Lithium Batteries to Power Your Off-Grid and ...

Below is a comparison table summarizing some top-rated inverters and inverter-inclusive setups that work well with lithium batteries for various applications including RVs, ...

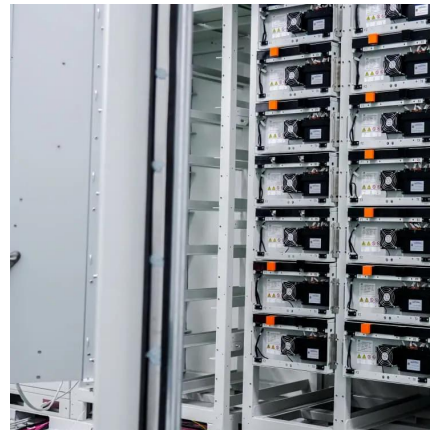
[WhatsApp](#)



### How To Choose A Reliable Lithium Battery Pack For An Inverter

It's important to have a dependable lithium battery pack for your inverter so that you have enough power to run your electrical appliances. The article will teach you how to ...

[WhatsApp](#)



### How Do You Choose the Right Inverter Size for Your Specific ...

To choose the right inverter size for your specific power needs, first calculate your total power requirements in watts. Multiply the battery capacity (in Ah) by its voltage (typically ...

[WhatsApp](#)







### [How to Choose the Right Inverter for Lithium Batteries?](#)

Answer: To choose the right inverter for lithium batteries, match the inverter's voltage and capacity to your battery's specifications, prioritize pure sine wave inverters for ...

[WhatsApp](#)



### [Do You Need a Special Inverter for Lithium Batteries?](#)

In this blog, we will explore the necessity of specialized inverters for lithium batteries, aiming to equip you with the knowledge to make informed decisions about your ...

[WhatsApp](#)



### [Which Battery Is Best for an Inverter? - leaptrend](#)

Which Battery Is Best for an Inverter? Choosing the right battery for your battery inverter is critical for ensuring reliable backup power, whether for your home, business, or off ...

[WhatsApp](#)



### [Can Lithium Batteries Work With Any Type of Inverter?](#)

For optimal performance in home energy stems, choose an inverter specifically designed for lithium battery or LiFePO4 battery systems, and always verify compatibility before ...

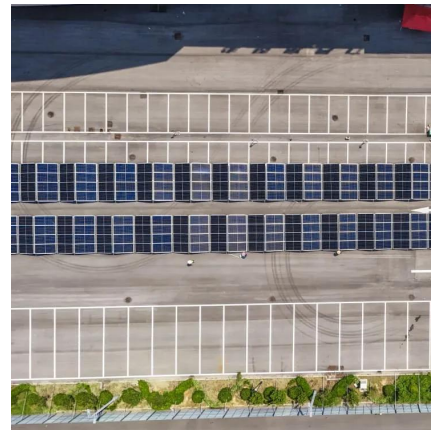
[WhatsApp](#)



## Why Lithium Battery for Home Inverters Are the Best Choice

In this blog, we will explore why lithium batteries are the best choice for home inverters, comparing their advantages to other battery types, and providing insights on how to ...

[WhatsApp](#)



## A 3-step guide to choose the right inverter & inverter batteries

Learn how to choose the perfect inverter and battery with this simple 3-step guide. Get expert tips for selecting the right power backup solution for your home or office.

[WhatsApp](#)

## Contact Us

For catalog requests, pricing, or partnerships, please visit:  
<https://www.straighta.co.za>