

# **How to charge the on-site energy solar communication high-voltage distribution cabinet**





## Overview

---

How do I connect a grid-tied solar panel system?

Always refer to the NEC code in effect or consult a licensed electrician for safety and accuracy. There are two basic approaches to connecting a grid-tied solar panel system, as shown in the wiring diagrams below. The most common is a "LOAD SIDE" connection, made AFTER the main breaker.

How does a solar farm connect to the grid?

All solar farms connect to a specific point on the electrical grid, the vast network of wires that connects every power generation plant to every home and business that consumes power. That point is called the "point of interconnection," or POI.

Can a solar circuit breaker be a load-side connection?

Both rules must be satisfied to meet Code when using a load-side connection. Known as the 120% rule, the solar circuit breaker can be no more than 20% of the main electrical panel rating. The electrical panel rating Amps (A), or Busbar rating, is the manufacturer rating typically found on a label.

Which inverter / chargers are suitable for grid-tie solar?

Our inverter / chargers manage power conversion and battery charging. Conext™ XW Pro, XW+ and SW are suitable for grid-tie solar with storage, backup power, self-consumption, and off-grid power for homes, small businesses, and remote communities.

How much voltage does a solar farm need?

If the nearest transmission line to your property has a voltage of, say, 115 kV (115,000 volts), the output voltage from the solar farm needs to "step up" to 115 kV to feed power into it. Likewise, the power that line carries to a neighborhood 50 miles away eventually needs to "step down" in voltage so that homes can use it.



How does a utility meter connect to a solar panel?

There is an ALTERNATIVE UTILITY CONNECTION called a "Supply or Line Side" connection. This connection is made BEFORE the main breaker. A junction box is added between the utility meter and the main service panel. Then the wires from the utility meter, the main breaker panel, and the PV solar are connected in the junction box.



## How to charge the on-site energy solar communication high-voltage



### Voltage regulation mitigation techniques in distribution system ...

The share of power generated from solar photovoltaic (SPV) is increasing drastically worldwide to meet the ever increasing energy demands. The power generated from the solar ...

[WhatsApp](#)

### [How Does a Solar Farm Connect to the Grid?](#)

Where a substation is located impacts a solar developer's economics, which determines how much they will pay for your land. This plain-English article explains what you need to know.

[WhatsApp](#)



### Optimal placement, sizing, and daily charge/discharge of battery energy

Optimal placement, sizing, and daily charge/discharge of battery energy storage in low voltage distribution network with high photovoltaic penetration

[WhatsApp](#)



### How to Install a -48V Telecom Power System: A Step-by-Step ...

Learn how to install a -48V telecom power system step-by-step. This guide covers equipment selection, design considerations,



wiring, and essential maintenance tips for reliable ...

[WhatsApp](#)



## How It Works: Electric Transmission & Distribution and ...

Distribution systems, typically rated below 34 kV, can tie directly into high-voltage transmission networks or be fed by sub-transmission networks via "step down" substations.

[WhatsApp](#)



## Step-by-Step Installation Guide for High Voltage Solar Charge

High voltage solar charge controllers emerge as the critical gatekeepers, ensuring optimal battery charging and system longevity. This comprehensive guide empowers you to embark on the ...

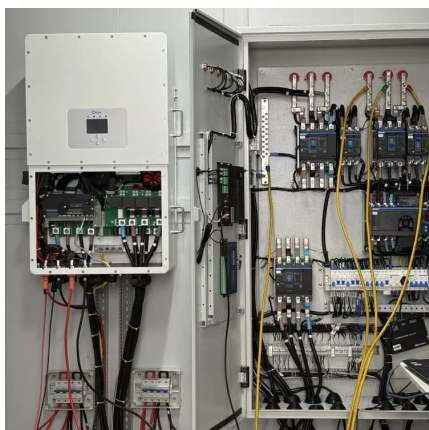
[WhatsApp](#)



## How to Connect Solar Panels to House Electricity: Complete ...

4 days ago · Learn how to safely connect solar panels to your home's electrical system. Complete guide covering grid-tied, off-grid, and hybrid solar installations with step-by-step instructions.

[WhatsApp](#)







### [How to connect a PV solar system to the utility grid](#)

The purpose of this article is to give you a basic understanding of the concepts and rules for connecting a solar panel system to the utility grid and the household electrical box or meter.

[WhatsApp](#)



### [Schneider Electric Handbook for Solar Installers](#)

Through the charging stages, the system intelligently exports the excess PV power not stored by the battery, while adjusting to the charge voltage settings of the charge controller.

[WhatsApp](#)

### [How to charge solar energy with high voltage .](#) [NenPower](#)

Understanding how to set up and charge solar energy with high voltage is crucial for stakeholders within the energy sector. The successful execution of such systems involves an ...

[WhatsApp](#)



### **How to charge the high voltage distribution cabinet of the new**

A solar charge controller is an essential part of a solar system that uses batteries. This basic guide explains what it does and why it's important to a solar energy system.

[WhatsApp](#)



## Contact Us

---

For catalog requests, pricing, or partnerships, please visit:  
<https://www.straighta.co.za>