

# How to change the battery of an outdoor base station





## Overview

---

Do I need to replace my base station's batteries?

If you're not certain which system you have, see the [Which Version of the SimpliSafe® System Do I Have](#) article. You will likely never need to replace your Base Station's batteries as they are rechargeable and meant to last. The Base Station takes four (4) 1.2V, 1300mAh nickel-metal hydride (NiMH) rechargeable batteries.

How do you remove a battery from a base station?

To safely remove the battery from your SimpliSafe base station, you'll need a small Phillips head screwdriver. This tool will allow you to unscrew the securing screw that fastens the battery compartment cover in place.

How many batteries does the base station take?

The Base Station takes four (4) 1.2V, 1300mAh nickel-metal hydride (NiMH) rechargeable batteries. Regular alkaline batteries should never be inserted into the Base Station, as they may damage the device. Once you have acquired the necessary NiMH rechargeable batteries, you can follow the steps below to replace them:.

How to remove a battery from a SimpliSafe base station?

To remove the battery from your SimpliSafe base station, first locate the battery compartment on the bottom of the base station.

Can you put alkaline batteries in a base station?

NEVER insert regular alkaline batteries into the Base Station as they may damage the device. Plug your Base Station back into power. Was this helpful?

Does your Keypad look like the one pictured to the left?

.



How does the base station stay operational during a power outage?

In the event of a power outage, the battery kicks in to keep the base station operational, maintaining the security of your home or business. This backup power source is a key component that adds an extra layer of reliability to your security system.



## How to change the battery of an outdoor base station

---



### How to Change SimpliSafe Battery? Your Complete Guide to ...

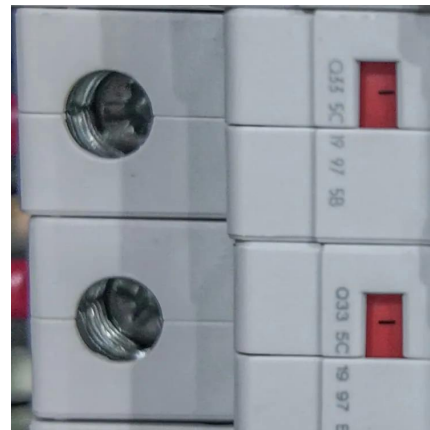
If you need to change the battery in your SimpliSafe security system, start by disarming the system. Then, locate the base station and remove the battery compartment cover.

[WhatsApp](#)

### ?Changing batteries in base station , SimpliSafe Support Home

Changing batteries in base station Is there a manual, with photos or step by step instructions, showing how to replace the battery in the base station? I had a power outage and ...

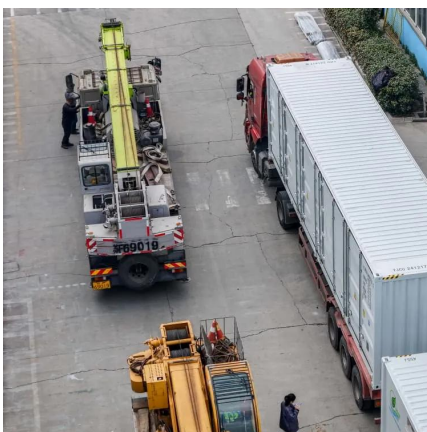
[WhatsApp](#)



### Wireless Weather Station Battery Replacement Instructions

If you own a wireless weather station made by TFA, you may eventually need to replace the batteries. This guide will provide you with simple and clear instructions on how to do this ...

[WhatsApp](#)



### AcuRite Iris® (5-in-1) Reset

Change the A-B-C switch on both units to a new, matching channel then press and hold the reset button for 20 seconds if applicable. Reinstall the batteries in the outdoor sensor. Reinstall ...





[WhatsApp](#)



### [How to Replace Batteries in SimpliSafe® Devices](#)

To change your Motion Sensor Gen 2 battery, slide the sensor up and off its bracket. Then, replace the battery and slide it back onto its bracket. If the sensor does not come back online ...

[WhatsApp](#)



### **How To Replace Base Station Batteries , SimpliSafe Support Home**

You will likely never need to replace your Base Station's batteries as they are rechargeable and meant to last. The Base Station takes four (4) 1.2V, 1300mAh nickel-metal hydride (NiMH) ...

[WhatsApp](#)



### **How to Remove SimpliSafe Base Station Battery? (Step-by-Step ...**

By following these steps, you can easily maintain and replace the battery in your SimpliSafe base station, ensuring uninterrupted security for your home or business.

[WhatsApp](#)





#### 4100000864\_02\_Aspen\_Outdoor-Camera ...

Outdoor Camera SE Quick Start Guide For the best experience Charge your camera before setup To charge camera: First, plug your base station into power. Using the base station's USB port, ...

[WhatsApp](#)



#### SimpliSafe Battery Guide: Battery Life and Replacement Tips

Except for the base station, which requires a rechargeable battery,\* and the SimpliCam, which works only with a hardwired power supply, below is a detailed list of how ...

[WhatsApp](#)

## Contact Us

---

For catalog requests, pricing, or partnerships, please visit:  
<https://www.straighta.co.za>