

# **How to calculate the charging current of base station battery**





## Overview

---

The following steps outline how to calculate the Charging Current. First, determine the battery capacity (C) in Amp-hours (Ah). Next, determine the desired charge time (t) in hours. Next, gather the formula from above  $I = C / t$ . Finally, calculate the Charging Current (I) in Amps (A). How do you calculate battery charging?

Battery charging calculations rely on several fundamental formulas to determine charging current, time, voltage, and efficiency. Below are the key formulas with detailed explanations. Calculates charging current based on battery capacity (C) and charging rate (C-rate). C: Battery capacity in Ah.

How to calculate battery charging time?

Below are the formulas for calculating the required battery charging time (in hours) and the necessary charging current (in amperes): Charging Time of Battery = Battery Ah  $\div$  Charging Current  $t = \text{Ah} \div \text{A}$  and Required Charging Current for battery = Battery Ah  $\times 10\% \text{ A} = \text{Ah} \times 10\%$  Where: t = Time in hrs.

How long does a battery take to charge?

Apply the Formula: Charging Time =  $50 \div 7 \times 0.90 = 7.94$  hours (approx. 8 hours). If you need to determine the required charging current for a specific charging time, use this formula:  $\square \text{ Charging Current (A)} = \text{Battery Capacity (Ah)} \div (\text{Charging Time (h)} \times \text{Efficiency Factor})$ .

What is the correct charging current?

The correct charging current depends on the battery's capacity and the desired charge time. It is crucial to use the appropriate current to ensure the battery's longevity and safety. How to Calculate Charging Current?

.

How to calculate charging time of a lead acid battery?



Here is the formula of charging time of a lead acid battery. Charging time of battery = Battery Ah / Charging Current  $T = Ah / A$  Where, T = Time hrs. Ah = Ampere Hour rating of battery A = Current in Amperes Example Example based on a 120 Ah battery (This information is available on the label of the battery on the top side).

How do you calculate charging current?

The following steps outline how to calculate the Charging Current. First, determine the battery capacity (C) in Amp-hours (Ah). Next, determine the desired charge time (t) in hours. Next, gather the formula from above =  $I = C / t$ . Finally, calculate the Charging Current (I) in Amps (A).



## How to calculate the charging current of base station battery

---



### [EV Charging Time Calculator - Estimate Charge Duration](#)

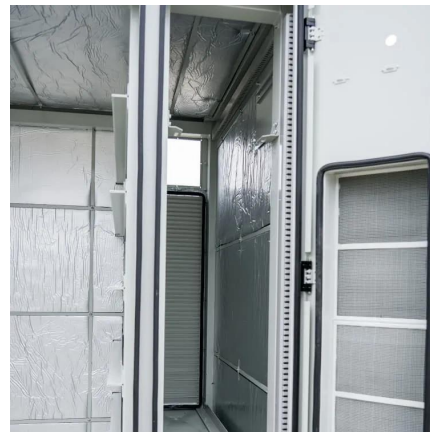
How to Use the EV Charging Time Calculator To use this EV Charging Time Calculator, please follow the instructions below: Enter the total battery capacity of your electric ...

[WhatsApp](#)

### [How To Calculate Battery Charging Current and Time?](#)

Charging a battery with more than needed and rated current may damage it or shorten its life. So here formula is very simple, just divide the battery's AH by C# ratings which ...

[WhatsApp](#)



### [How to Calculate Battery Charging Time and Current?](#)

In this simple tutorial, we will explain how to determine the appropriate battery charging current and how to calculate the required charging time in hours. To make it easy to understand, even ...

[WhatsApp](#)

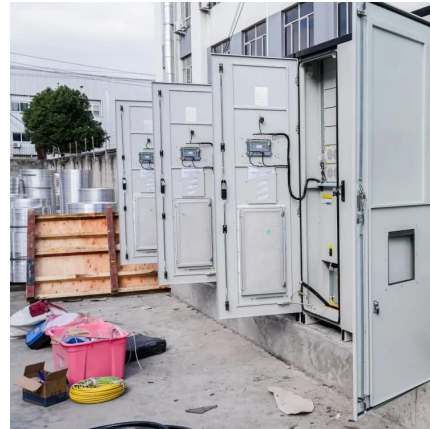
### **How Long to Charge an EV: Time, Formula, and Factors Explained**

Confused How Long Does It Take to Charge an EV? Learn to calculate your EV's charging time using a simple formula based on the battery



charge needed and charger power with affecting ...

[WhatsApp](#)



### Battery pack calculator : Capacity, C-rating, ampere, charge and

C-rate is used to scale the charge and discharge current of a battery. For a given capacity, C-rate is a measure that indicate at what current a battery is charged and discharged to reach its ...

[WhatsApp](#)



### Battery Charge And Discharge Calculator , Charge Time, Run ...

Specify Charging/Discharging Current: Input the current in amperes (A) at which the battery will be charged or discharged. This impacts the time taken for the process. ...

[WhatsApp](#)



### [How to Calculate Battery Charging Current and Time](#)

Typically, the charging current is set to about 10% of the battery's amp-hour (Ah) capacity, with charging time estimated by dividing the battery capacity by the charging current ...

[WhatsApp](#)





## Battery Calculator - Calculate Battery Life and Capacity

Input the battery capacity and charger output current to calculate the estimated time required to fully charge your battery. This feature will assist you in scheduling charging times ...

[WhatsApp](#)



## [Guide to Calculating Battery Charging Current and Time](#)

Understanding how to calculate Charging Current and Time is essential for anyone working with batteries--whether you're managing off-grid solar systems, electric vehicles, or ...

[WhatsApp](#)

## Contact Us

---

For catalog requests, pricing, or partnerships, please visit:  
<https://www.straightta.co.za>