

How often should the power supply of the base station be replaced





Overview

How long does it take to replace a PSU?

Don't take too long to replace it, though, as power supply internal components still suffer from age. A good rule of thumb is that you should consider your PSU about a year or two after its warranty ends.

How long do power supplies last?

Power supplies, a key component in your PC, don't last forever. Knowing how long they typically last helps you plan for upgrades and avoid sudden system failures. While the lifespan of a power supply varies based on several factors, there's a general timeframe you can expect.

How often should I replace my PSU?

Replace your PSU every 5-10 years based on warranty. Consider upgrading your PSU with significant component upgrades. Watch for signs like blue screens, noises, and performance dips. We often neglect our computer's power supply. In fact, most of us could go for years and generations of the latest PC hardware without touching it.

How long should a PC power supply last?

You should only keep a PSU beyond about five years if your computer has specialized units guaranteed by the manufacturer to last longer. When should I upgrade my PC power supply?

If you encounter any problems under high load with multiple devices running, this means it might be time for a power supply upgrade.

Should I replace or upgrade my PSU?

So, if you start seeing some of these symptoms on your computer, you should replace or upgrade your PSU (or RMA it to the manufacturer if it's still under warranty). These signs and symptoms could mean that your PSU is starting to



deteriorate, and you should upgrade or replace it soon.

Should I upgrade or replace my power supply?

There comes a time in every PC's life when upgrading or replacing the power supply becomes necessary. This could be due to a variety of reasons, from performance degradation to the need for more power to support new components. Upgrading your power supply isn't just about addressing wear and tear; it's often about meeting new demands.



How often should the power supply of the base station be replaced



[When do you replace a power supply : r/buildapc](#)

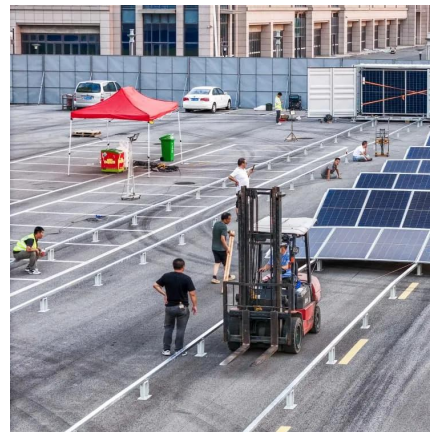
I have an old 486 machine with a power supply from the late 80's that is still running fine. Naturally, these old systems are not left on 24/7 like my modern PC, but they do get used ...

[WhatsApp](#)

[How often would you replace a power supply?](#)

At least every five years for sure. Technology runs 24x7 and after 5 years with dust, heat, and wear, it is time to replace. Gustav, That's a good point, but something else that ...

[WhatsApp](#)



[How often \(if ever\) should one replace a PSU? : r/buildapc](#)

It's not as simple as "cheap is bad, expensive is good" but the lowest cost options in power supplies are rarely going to last as long (I've only had one PC PSU go bang on me in 30 ...

[WhatsApp](#)



[How often \(if ever\) should one replace a PSU? : r/buildapc](#)

It's not as simple as "cheap is bad, expensive is good" but the lowest cost options in power supplies are rarely going to last as long (I've only



had one PC PSU go bang on me in ...

[WhatsApp](#)



[When do you replace a power supply : r/buildapc](#)

It's hard to provide a solid answer for your question. I have an old Win98 build with a power supply that is over 20 years old and it is doing fine. I have an old 486 machine with a power ...

[WhatsApp](#)



The Lifespan of PC Power Supplies: How Long Do They Last?

While the lifespan of a power supply varies based on several factors, there's a general timeframe you can expect. Most power supplies in personal computers have a lifespan ...

[WhatsApp](#)



what kind of power supplies do you guys use for base station

That radio should run from 11.73v to 15.87v but at 12v and 5 amps, you'll probably put too much demand on that little power supply. I use a switching power supply similar to this one.

[WhatsApp](#)





Replacing My Base Station and Transfer Service to a New Base Station

There may be a point where you will need to transfer your system and service to a new or different Base Station, such as replacing a faulty Base Station or transferring to a new Base Station ...

[WhatsApp](#)



How Long do PSU Last? & How Often Should Your Replace it?

There is no absolute numbers to how long a PSU last. High-quality PSUs with a 10-year manufacturer's warranty can last that long. Even at moderate usage, 5-year warranty ...

[WhatsApp](#)

How often should sanitizer at the sandwich station be replaced?

Sanitizer at the sandwich station should be replaced regularly to ensure the safety and hygiene of the food preparation area. The frequency of replacement depends on the type of sanitizer ...

[WhatsApp](#)



Solved: of 50. How often should sanitizer at the sandwich station ...

of 50. How often should sanitizer at the sandwich station be replaced? Every hour or sooner if it becomes soiled At Close At post-rush lunch and post-rush dinner or as needed After every ...

[WhatsApp](#)



Contact Us

For catalog requests, pricing, or partnerships, please visit:
<https://www.straightta.co.za>