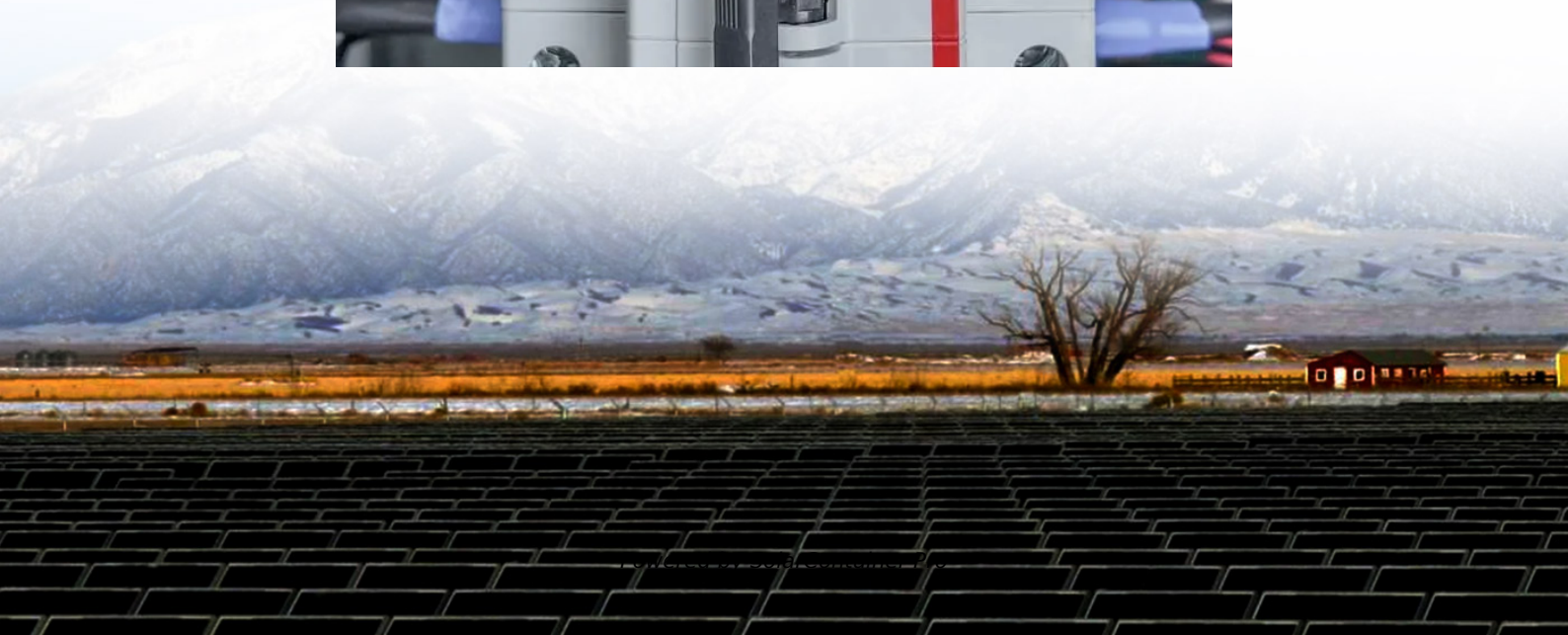


# How much power does the EU 5G base station consume





## Overview

---

To understand this, we need to look closer at the base station power consumption characteristics (Figure 3). The model shows that there is significant energy consumption in the base station even at the times when there is no output power i.e. when the base station is in an idle state.

Today we see that a major part of energy consumption in mobile networks comes from the radio base station sites and that the consumption is stable. We can.

The 5G NR standard has been designed based on the knowledge of the typical traffic activity in radio networks as well as the need to support sleep states in radio.

The first deployments of NR are mainly non-standalone(NSA) deployments. This means that existing LTE base stations will still be used, and NR will be added for.

We start by looking at the impact on user performance when introducing NR (Figure 6). We can notice that the LTE-only network is not sufficient to serve the.

How much power does a 5G station use?

The power consumption of a single 5G station is 2.5 to 3.5 times higher than that of a single 4G station. The main factor behind this increase in 5G power consumption is the high power usage of the active antenna unit (AAU). Under a full workload, a single station uses nearly 3700W.

Is 5G more energy efficient than 4G?

Although the absolute value of the power consumption of 5G base stations is increasing, their energy efficiency ratio is much lower than that of 4G stations. In other words, with the same power consumption, the network capacity of 5G will be as dozens of times larger than 4G, so the power consumption per bit is sharply reduced.

Why does 5G use so much power?



The main factor behind this increase in 5G power consumption is the high power usage of the active antenna unit (AAU). Under a full workload, a single station uses nearly 3700W. This necessitates a number of updates to existing networks, such as more powerful supplies and increased performance output from supporting facilities.

Why is low 5G energy consumption important?

With new devices and use cases increasing the capacity of the networks, the demand to ensure low 5G energy consumption is critical to minimizing operator expenses and ensuring they can still meet energy reduction goals. How can NR bring an answer?

Figure 1: Global mobile data traffic outlook [Ericsson Mobility Report, June 2019].

Does 5G New Radio save energy?

Emerging use cases and devices demand higher capacity from today's mobile networks, leading to increasingly dense network deployments. In this post, we explore the energy saving features of 5G New Radio and how this enables operators to build denser networks, meet performance demands and maintain low 5G energy consumption.

What is a 5G base station?

A 5G base station is mainly composed of the baseband unit (BBU) and the AAU — in 4G terms, the AAU is the remote radio unit (RRU) plus antenna. The role of the BBU is to handle baseband digital signal processing, while the AAU converts the baseband digital signal into an analog signal, and then modulates it into a high-frequency radio signal.



## How much power does the EU 5G base station consume

---



### [Front Line Data Study about 5G Power Consumption](#)

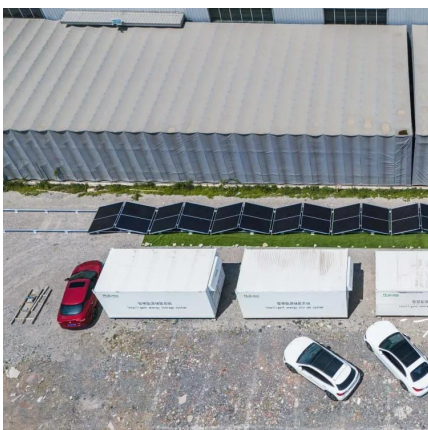
The power consumption of a single 5G station is 2.5 to 3.5 times higher than that of a single 4G station. The main factor behind this increase in 5G power consumption is the high power ...

[WhatsApp](#)

### **Comparison of Power Consumption Models for 5G Cellular Network Base**

This paper conducts a literature survey of relevant power consumption models for 5G cellular network base stations and provides a comparison of the models. It highlights ...

[WhatsApp](#)



### **The 5G Dilemma: More Base Stations, More Antennas--Less Energy?**

A lurking threat behind the promise of 5G delivering up to 1,000 times as much data as today's networks is that 5G could also consume up to 1,000 times as much energy.

[WhatsApp](#)

### [5G Base Stations: The Energy Consumption Challenge](#)

However, high energy-efficiency does not necessarily mean lower energy/electricity consumption for 5G base stations. Besides, the



adoption of C-band or mmWave spectrum requires more ...

[WhatsApp](#)



### **How Much Power Does 5G Base Station Consume? , Huijue ...**

Have you ever wondered how much energy our hyper-connected world is consuming? 5G base stations, the backbone of next-gen connectivity, now draw 3-4 times more power than their 4G ...

[WhatsApp](#)



### **How much power does a 5G base station consume? It is rumored ...**

The 5G base station uses high power consumption and high radio frequency signals, which are used to process more signals of digital units and electromechanical units, ...

[WhatsApp](#)



### **How Much Power Does a 5G Base Station Consume? - Smart Solar**

On average, a 5G base station consumes between 1,000 to 3,000 watts. This is significantly higher than 4G base stations, which typically consume 500 to 1,500 watts.

[WhatsApp](#)





### [Assessment of 5G Deployment Status in Europe](#)

Infrastructure: The EU-27 has deployed around ten 5G base stations per million capita, whereas South Korea has rolled out around 1,500 base stations per million (by the end of 2019). The ...

[WhatsApp](#)



### **Why does 5g base station consume so much power and how to ...**

In addition to other small modules that use electricity, the power consumption of a single 5G base station is generally around 3700 watts, which is about three times that of 4G ...

[WhatsApp](#)

### **5G network deployment and the associated energy consumption ...**

The simulation results show that 700 MHz and 26 GHz will play an important role in 5G deployment in the UK, which allow base stations to meet short-term and long-term data ...

[WhatsApp](#)



### **A picture tells you why 5G base stations consume so much power**

However, while 5G base stations are blooming everywhere, the saying that the energy consumption of 5G base stations has become a veritable "electric tiger" is also ...

[WhatsApp](#)



### **A technical look at 5G energy consumption and performance**

To understand this, we need to look closer at the base station power consumption characteristics (Figure 3). The model shows that there is significant energy consumption in the ...

[WhatsApp](#)



## **Contact Us**

---

For catalog requests, pricing, or partnerships, please visit:  
<https://www.straighta.co.za>