

How much power does Huawei base station reserve





Overview

In Hangzhou, the 5G Power solution deployed by China Tower and Huawei supports one cabinet for one site and boasts smart features like intelligent peak shaving, intelligent voltage boosting, and intelligent energy storage.

China Tower is a world-leading tower provider that builds, maintains, and operates site support infrastructure such as telecommunication towers, high-speed rail, subway systems.

China Tower and Huawei conducted joint pilot verification in 2018 and found that the 5G Power solution could support effective 5G site deployment without changing the grid, power distribution or cabinets. This in turn could cut retrofitting costs for a single site by more than.

How much power does a 5G base station consume?

That's almost a threefold increase compared to 4G (5). One 5G base station is estimated to consume about as much power as 73 households (6), and 3x as much as the previous generation of base stations (5), (7).

Are 5G base stations causing more energy consumption?

However, Li says 5G base stations are carrying five times the traffic as when equipped with only 4G, pushing up power consumption. The carrier is seeking subsidies from the Chinese government to help with the increased energy usage.

Does China Mobile have a 5G base station?

China Mobile has tried using lower cost deployments of MIMO antennas, specifically 32T32R and sometimes 8T8R rather than 64T64R, according to MTN. However, Li says 5G base stations are carrying five times the traffic as when equipped with only 4G, pushing up power consumption.

How many 5G sites will China Tower build in 2022?

China Tower planned to build or retrofit about 2 million 5G sites between 2019 and 2022. An estimated 800,000 of these sites will adopt Huawei's 5G Power



solution, eliminating 900 million kg in carbon emissions every year, helping to realize targets for green power grids for the 5G era.

What is a 5G base station?

A 5G base station is mainly composed of the baseband unit (BBU) and the AAU — in 4G terms, the AAU is the remote radio unit (RRU) plus antenna. The role of the BBU is to handle baseband digital signal processing, while the AAU converts the baseband digital signal into an analog signal, and then modulates it into a high-frequency radio signal.

How much power does a BBU use?

Data shows the power of the BBU is relatively stable and is affected very little by the workload, while AAU is opposite, with power consumption growing as the load increases. With S111 configuration and 100% load, the power consumption of a single station can even reach 3852.5W.



How much power does Huawei base station reserve



5G base stations use a lot more energy than 4G base stations: MTN

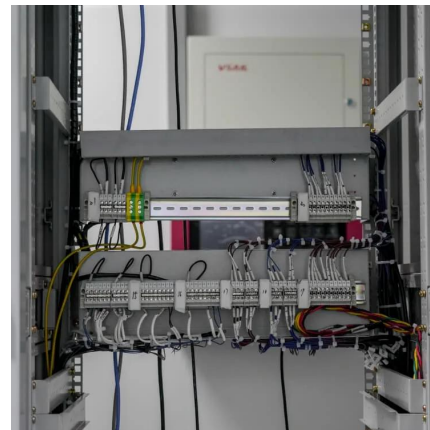
"Schneider Electric predicts that with 5G, the power distribution will require hundreds of thousands or even millions of micro data centers globally," according to MTN.

[WhatsApp](#)

[Understanding Resource Adequacy and Reserve Capacity](#)

Having a built-in reserve capacity of electric supply provides for a "cushion" for situations that might require more electricity such as during power plant outages (planned or ...

[WhatsApp](#)



Huawei will launch lowest power consumption 5G base station, ...

Today, Huawei will have a new "0 Bit 0 Watt" 5G network base station next month, which could standby at the lowest power consumption of 5W equal to a light bulb.

[WhatsApp](#)

5G NR Total Transmit Power , Maximum Cell Transmit Power

It's crucial for the network to manage total transmit power effectively to ensure reliable communication, efficient use of resources, and



compliance with regulatory limits. ...

[WhatsApp](#)



How Much Power Does 5G Base Station Consume? , Huijue ...

Have you ever wondered how much energy our hyper-connected world is consuming? 5G base stations, the backbone of next-gen connectivity, now draw 3-4 times more power than their 4G ...

[WhatsApp](#)



[Front Line Data Study about 5G Power Consumption](#)

Studies show that with 5G base stations, it is possible to download more than 5,000 HD movies using only 1 kWh, whereas with 4G, the same amount of power would allow for fewer than 200 ...

[WhatsApp](#)



5G Power: Creating a green grid that slashes costs, emissions

The 5G Power solution has a fully modular design and leverages advanced high-density technology, delivering a fourfold increase in power density compared with traditional power ...

[WhatsApp](#)





How energy-efficient are Huawei's 5G base stations compared to ...

Power Consumption: Huawei's 5G base stations have significantly lower power consumption compared to their 4G counterparts. This is achieved through advanced power management ...

[WhatsApp](#)



[3900 Series Base Station Product Description V1](#)

These base stations can work in multi-mode due to their cutting-edge modular design. They also have broad bandwidth and are eco-friendly and easily upgradeable. Specifically, 3900 series ...

[WhatsApp](#)

Contact Us

For catalog requests, pricing, or partnerships, please visit:
<https://www.straightta.co.za>