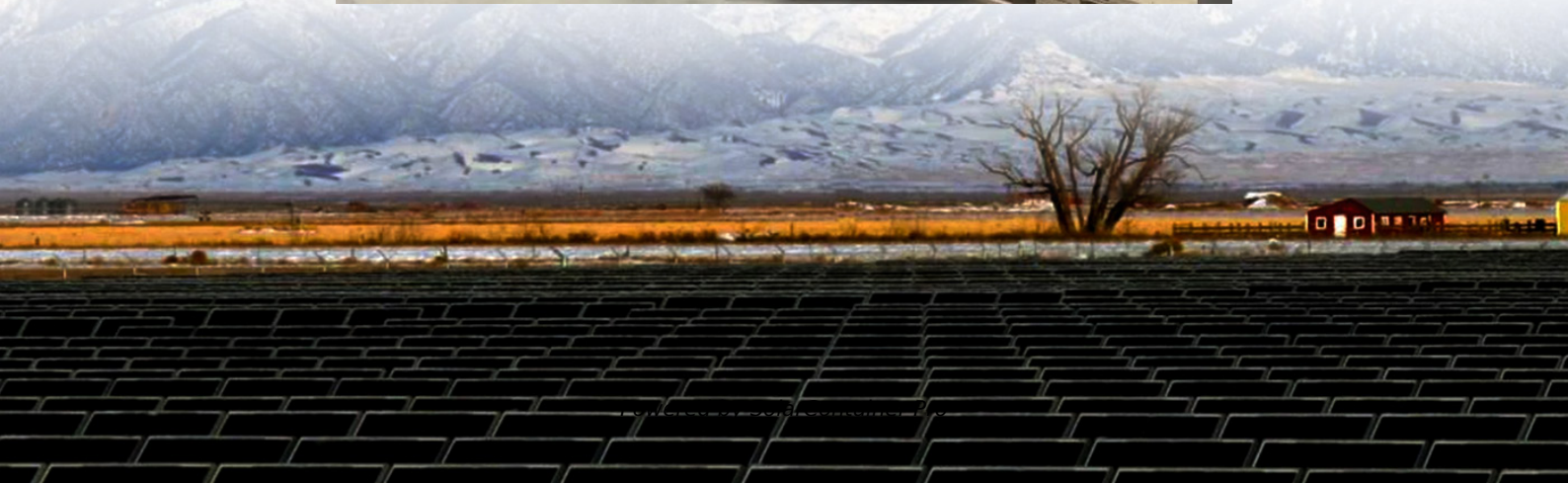


How much power does Austrian Communications 5G base station generate





Overview

Today we see that a major part of energy consumption in mobile networks comes from the radio base station sites and that the consumption is stable. We can.

The 5G NR standard has been designed based on the knowledge of the typical traffic activity in radio networks as well as the need to support sleep states in radio.

The first deployments of NR are mainly non-standalone(NSA) deployments. This means that existing LTE base stations will still be used, and NR will be added for.

We start by looking at the impact on user performance when introducing NR (Figure 6). We can notice that the LTE-only network is not sufficient to serve the.

Ericsson has made a significant contribution to the standardization of the New Radio's energy saving features. Parts of this process were documented in our.

How much power does a 5G station use?

The power consumption of a single 5G station is 2.5 to 3.5 times higher than that of a single 4G station. The main factor behind this increase in 5G power consumption is the high power usage of the active antenna unit (AAU). Under a full workload, a single station uses nearly 3700W.

Are 5G base stations causing more energy consumption?

However, Li says 5G base stations are carrying five times the traffic as when equipped with only 4G, pushing up power consumption. The carrier is seeking subsidies from the Chinese government to help with the increased energy usage.

Does China Mobile have a 5G base station?

China Mobile has tried using lower cost deployments of MIMO antennas, specifically 32T32R and sometimes 8T8R rather than 64T64R, according to



MTN. However, Li says 5G base stations are carrying five times the traffic as when equipped with only 4G, pushing up power consumption.

Why does 5G use more power than 4G?

The data here all comes from operators on the front lines, and we can draw the following valuable conclusions: The power consumption of a single 5G station is 2.5 to 3.5 times higher than that of a single 4G station. The main factor behind this increase in 5G power consumption is the high power usage of the active antenna unit (AAU).

What is a 5G base station?

A 5G base station is mainly composed of the baseband unit (BBU) and the AAU — in 4G terms, the AAU is the remote radio unit (RRU) plus antenna. The role of the BBU is to handle baseband digital signal processing, while the AAU converts the baseband digital signal into an analog signal, and then modulates it into a high-frequency radio signal.

How will 5G affect the energy consumption of mobile operators?

Edge compute facilities needed to support local processing and new internet of things (IoT) services will also add to overall network power usage. Exact estimates differ by source, but MTN says the industry consensus is that 5G will double to triple energy consumption for mobile operators, once networks scale.



How much power does Austrian Communications 5G base station ge



The 5G Dilemma: More Base Stations, More Antennas--Less Energy?

A lurking threat behind the promise of 5G delivering up to 1,000 times as much data as today's networks is that 5G could also consume up to 1,000 times as much energy.

[WhatsApp](#)

5G base stations use a lot more energy than 4G base stations: MTN

A typical 5G base station consumes up to twice or more the power of a 4G base station, writes MTN Consulting Chief Analyst Matt Walker in a new report entitled "Operators ...

[WhatsApp](#)



Why does 5g base station consume so much power and how to ...

5G base stations use high power consumption and high RF signals, which require more signal processing for digital and electromechanical units, and also put greater pressure ...

[WhatsApp](#)



5G Base Station Chips: Driving Future Connectivity by 2025

The evolution of wireless technology has brought the world to the brink of a connectivity revolution. As 5G networks become the



backbone of modern communication, 5G ...

[WhatsApp](#)



[Dynamic Power Management for 5G Small Cell Base Station](#)

5G networks with small cell base stations are attracting significant attention, and their power consumption is a matter of significant concern. As the increase of the expectation, concern for ...

[WhatsApp](#)

Final draft of deliverable D.WG3-02-Smart Energy Saving of ...

While 5G offers much faster speed, massive connections and much lower latency, and would enable a much bigger variety of new applications for both people's lives and vertical industries, ...

[WhatsApp](#)



Power Consumption: 5G Basestations Are Hungry, Hungry Hippos

The increased power consumption of next-generation basestations may be one of the dirty little secrets of 5G, which might not be a secret much longer as operators roll out ...

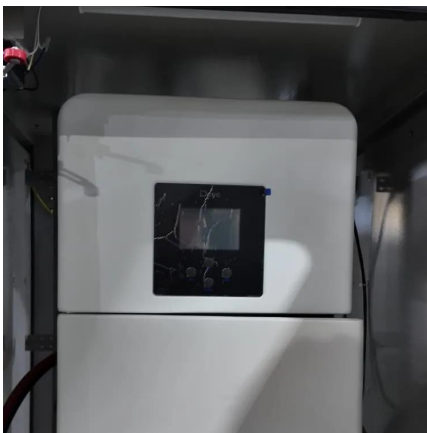
[WhatsApp](#)



[Front Line Data Study about 5G Power Consumption](#)

The power consumption of a single 5G station is 2.5 to 3.5 times higher than that of a single 4G station. The main factor behind this increase in 5G power consumption is the high power ...

[WhatsApp](#)



[5G Transmit Power and Antenna radiation](#)

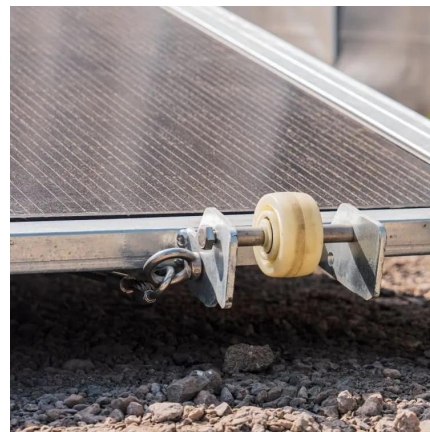
Output power is typically limited by the EMF constraints of the site. In general, the nominal output power has to be defined by the cell size and the required data rate at the cell edge.

[WhatsApp](#)

Modelling the 5G Energy Consumption using Real-world Data: ...

This paper proposes a novel 5G base stations energy consumption modelling method by learning from a real-world dataset used in the ITU 5G Base Station Energy Consumption Modelling ...

[WhatsApp](#)



[5G Base Stations: The Energy Consumption Challenge](#)

Early deployments indicate that 5G base stations require 2.5-3.5 times more power compared to a 4G one. Moreover, C-band, i.e., 3.4 GHz to 4.2 GHz, is deemed as the most popular 5G ...

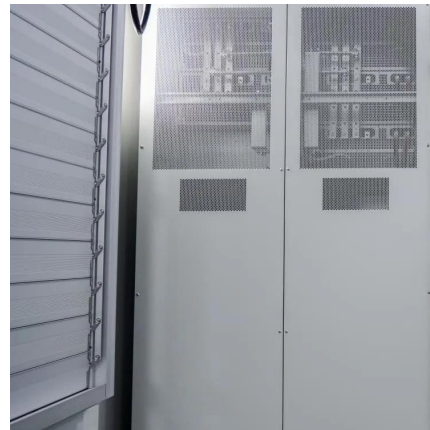
[WhatsApp](#)



Energy consumption optimization of 5G base stations considering

The explosive growth of mobile data traffic has resulted in a significant increase in the energy consumption of 5G base stations (BSs). However, the existing energy conservation ...

[WhatsApp](#)



Electric Load Profile of 5G Base Station in Distribution Systems ...

This paper proposes an electric load demand model of the 5th generation (5G) base station (BS) in a distribution system based on data flow analysis. First, the electric load model of a 5G BS ...

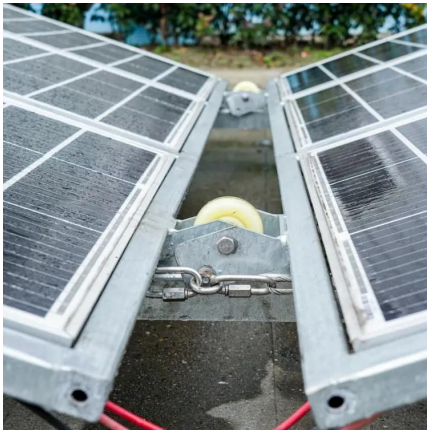
[WhatsApp](#)

Recent Developments in 5G Base Station Engineering - ...

Unleashing the Future: Recent Developments in 5G Base Station Engineering Across Central Europe The modern world is teetering on the brink of digital transformation, ...

[WhatsApp](#)





A technical look at 5G energy consumption and performance

To understand this, we need to look closer at the base station power consumption characteristics (Figure 3). The model shows that there is significant energy consumption in the ...

[WhatsApp](#)

[Power Consumption Modeling of 5G Multi-Carrier Base ...](#)

Importantly, this study item indicates that new 5G power consumption models are needed to accurately develop and optimize new energy saving solutions, while also considering the ...

[WhatsApp](#)



Contact Us

For catalog requests, pricing, or partnerships, please visit:
<https://www.straighta.co.za>