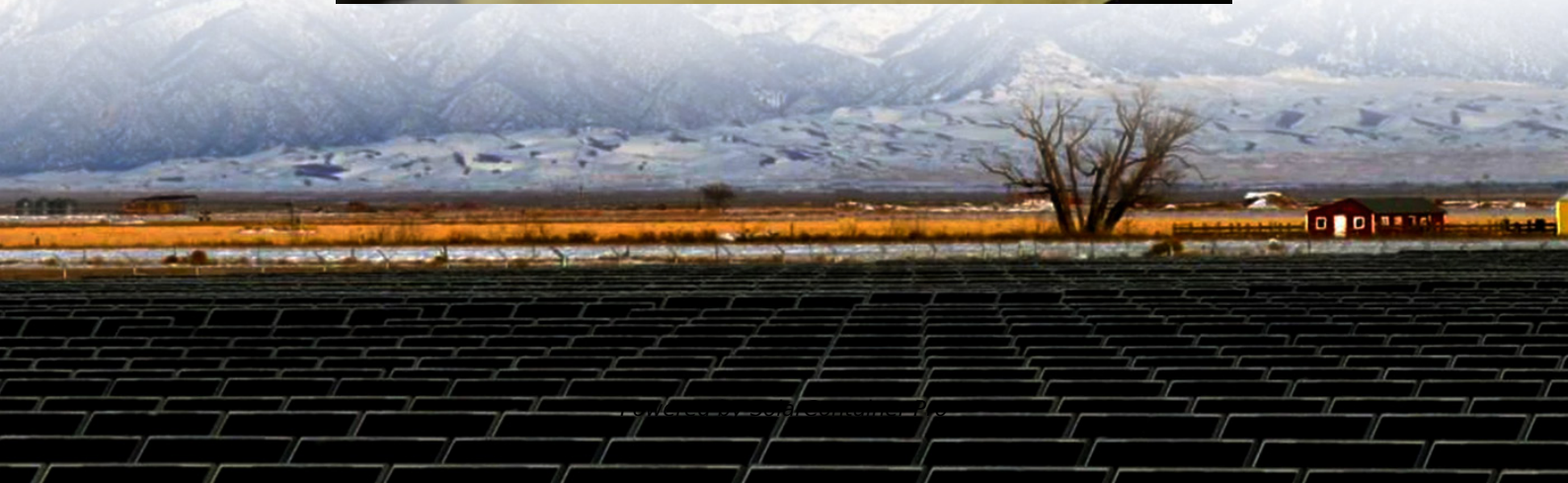


# **How much outdoor power supply is sufficient for traveling to Panama**





## Overview

---

Do I need a travel adapter or transformer when traveling to Panama?

Yes! North Americans do not need a travel adapter or transformer when traveling to Panama. Most device plugs will work with the outlet types in Panama. Also, the voltage in Panama is the same as in North America. Please note: an adapter will be needed if your device plug has a grounding pin and you are trying to use a Type A outlet.

Do I need a voltage converter in Panama?

Panama uses the same voltage as the United States and Canada (120 volts). However, the plug types may differ. If your device uses a standard North American plug, you will not need a voltage converter. However, you may need a plug adapter to connect your device to Panamanian outlets.

Do Europeans need an adapter to travel to Panama?

No! Europeans will need an adapter for the outlets and a transformer for the voltage when traveling to Panama. European device plugs will not work with the outlet types in Panama. Also, the voltage in Panama is different from European voltages.

Where can I buy a power adapter for Panama?

There are many different types of adapters available on Amazon that can be used in Panama. You can purchase a universal adapter that will fit most outlets in the world, or you can purchase a specific adapter for Panama. → Find travel adapters on Amazon. What Voltage and Frequency Are Used in Panama?

.

Where can I find travel adapters in Panama?

Find travel adapters on Amazon. What Voltage and Frequency Are Used in



Panama?

In Panama, the standard voltage is 110 V and the frequency of electricity is 60 Hz. If you're traveling from another country and your electronic device isn't compatible with Panama voltage, it may not work properly.

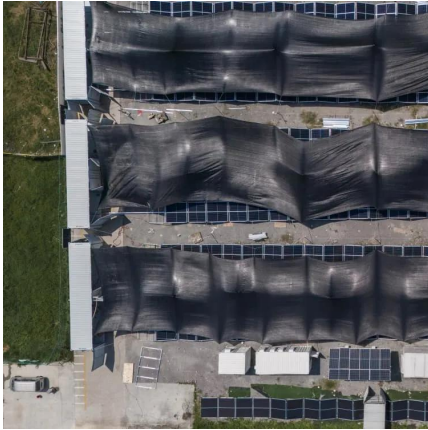
Where can I find a voltage converter in Panama?

You can find voltage converters on Amazon, or at your local electronics store. If you would like to bring your laptop, tablet, camera, or other electronic devices with you to Panama, it's important to check their voltage and frequency before traveling. If your electronic device isn't compatible with Panama voltage, it may not work properly.



## How much outdoor power supply is sufficient for traveling to Panama

---



### US to Panama Travel Plug Adapters

Panama uses the same type A/B outlets as found in the US so you should not need any adapters as long as your appliances have standard US 2 or 3 pin plugs. A vital part of every traveller's ...

[WhatsApp](#)

### What capacity outdoor power supply should I bring when traveling ...

What capacity outdoor power supply should I bring when traveling outdoors? Long-distance travel and short-distance travel are really different Long-distance travel and ...

[WhatsApp](#)



### How much solar outdoor power supply is needed , NenPower

To determine the necessary solar outdoor power supply, several factors must be evaluated, including 1. energy consumption requirements, 2. location and sun exposure, 3. ...

[WhatsApp](#)

### How to use plugs from United States of America in Panama

Its mostly safe to plug your electrical apparatus from United States of America in Panama without a voltage adapter. If you have any concerns with



a special device i.e. a medical device, you ...

[WhatsApp](#)



### What You Need to Know About Power Outlets and Voltages ...

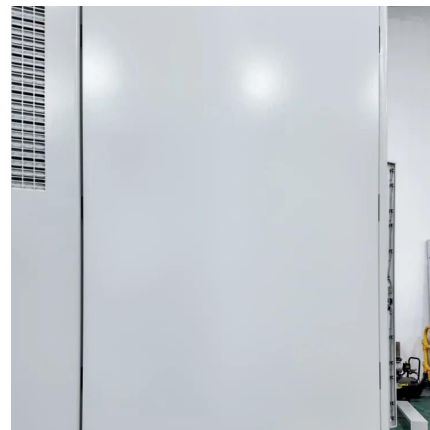
North American power outlets provide 120 volts at 60 Hz. Outlets in Europe provide 230 volts at 50 Hz. Voltages vary in other countries, too. Read the small print on your devices ...

[WhatsApp](#)

### [Panama Plugs & Sockets: Do I Need a Power Adapter? \[2025\]](#)

Whether or not you need a power converter in Panama depends on the voltage and frequency requirements of your electronic devices. Panama uses a standard voltage of 110 volts and a ...

[WhatsApp](#)



### [Power Plugs and Electricity in Panama](#)

The standard voltage in Panama (120 V) is much lower than the voltage supply in United Kingdom (UK) (230 V). A voltage converter is needed to ensure a safe input voltage level for your ...

[WhatsApp](#)





### [Travel adapter for Panama . Plugs and outlets in Panama](#)

In Panama the standard voltage is 120V with a frequency of 60Hz. This matches the 120V in the United States, so your electrical devices will work there without any issues.

[WhatsApp](#)



### [Travel Adaptor for Panama . Electrical Safety First](#)

A dual voltage rated appliance will display for example 'INPUT: 110-240V' on the body of the appliance or its power supply. This means that you will not need a converter or transformer but ...

[WhatsApp](#)

## Contact Us

---

For catalog requests, pricing, or partnerships, please visit:  
<https://www.straighta.co.za>