

How much is the maximum power of the solar integrated machine





Overview

Solar integrated machines can typically install between 300 watts to 10 kilowatts of electricity, depending on various factors such as design and intended application, efficiency ratings, and geographic location, with larger systems and optimized setups capable of generating significantly more energy. What is Tesla Solar inverter?

Tesla Solar Inverter offers improved aesthetics, reliability and native integration with the Tesla ecosystem for both Solar Roof and solar panel systems. DC power coming from solar modules is inverted to AC power by Tesla Solar Inverter for home consumption. Like Powerwall+, Powerwall 3 features an integrated solar inverter.

What is the 2025 Solar Builder energy storage system Buyer's Guide?

The 2025 Solar Builder Energy Storage System Buyer's Guide is here to cut through the noise. This ESS Buyer's Guide is a comprehensive list of what each brand is offering in the residential and C&I space heading into 2025. We sent a questionnaire to every manufacturer to ascertain their top product and what components are included.

What is a grid tied solar system?

Grid-Tied: In a grid-tied solar system, you can use more power than the solar produces from your utility if needed. In typical grid-tied systems, there is no energy storage. Consequently, if a power outage occurs, your solar system stops power generation.

How much energy does a 3KW Solar System use?

Lights: A 3kW solar system can efficiently power all the lights in an average American home. This includes LED and CFL bulbs in various rooms. Let's say you have 10 LED bulbs, each using 10 watts. In total, that's 100 watts (0.1 kW). If you use them for 5 hours a day, it would be $0.1 \text{ kW} \times 5 \text{ hours} = 0.5 \text{ kWh}$ per day.



Is a 20kW Solar System right for You?

A 20kW solar system is well-suited for larger residential properties, generating more power than the average American home uses. However, it becomes especially practical if you rely on all-electric appliances or reside in a hot climate where continuous air conditioning is necessary.

Should I add solar batteries to my solar system?

Consequently, if a power outage occurs, your solar system stops power generation. However, by adding solar batteries to your system, you can utilize all the energy generated by your system to keep essential appliances running during such outages and maximize your savings when energy prices are at their peak.



How much is the maximum power of the solar integrated machine



Grid-Connected Solar PV System with Maximum Power Point ...

In this research, a solar photovoltaic system with Maximum Power Point Tracking (MPPT) and battery storage is integrated into a grid-connected system using an improved ...

[WhatsApp](#)

Performance improvement and control optimization in grid-integrated ...

Abstract Photovoltaic (PV) systems integrated with the grid and energy storage face significant challenges in maintaining power quality, especially under fluctuating ...

[WhatsApp](#)



Solar Off-Grid Energy Storage Integrated Machine: Your Ultimate Power

Old-school solar setups required more gadgets than a Bond movie. Today's integrated machines combine panels, batteries, and smart tech into one sleek unit. Think of it ...

[WhatsApp](#)

A novel development of hybrid maximum power point tracking ...

So, in this article, a variable modified step grey wolf method is integrated with the adaptive-neuro-fuzzy-inference-system to improve the



energy production of solar systems.

[WhatsApp](#)



[How about the solar motor integrated machine.](#)
[NenPower](#)

The solar motor integrated machine signifies a transformative approach to energy efficiency and sustainability. 1. Utilization of renewable energy, 2. Technical advancements, 3. ...

[WhatsApp](#)



How much electricity does a solar panel produce? , NenPower

This approach maintains aesthetic appeal while expanding the practical applications of solar energy production within urban environments. Such innovations provide ...

[WhatsApp](#)



How many watts does the solar energy storage and control integrated

Integrated machines come in various configurations, including all-in-one units, modular systems, and those with external batteries. Essentially, larger and more complex ...

[WhatsApp](#)





[The Complete Off Grid Solar System Sizing Calculator](#)

Using your daily energy usage and Peak Sun Hours, and assuming a system efficiency of 70%, the calculator estimates the Wattage required for your off-grid solar system's ...

[WhatsApp](#)



How much electricity can a solar integrated machine install

The cost of installing a solar integrated machine can vary significantly based on size, type of solar technology employed, and local labor fees. On average, residential ...

[WhatsApp](#)

[A Special Message from Our CEO - M. Abdulqadir Jilani](#)

A Special Message from Our CEO - M. Abdulqadir Jilani Alhamdulillah, 2025 has been a year of growth and innovation for MJ Solar Solution Pvt. Ltd. ? We introduced Pakistan's first-ever AI Integrated Inverter -- a breakthrough technology that automatically repairs and solves ...

[WhatsApp](#)



Solar Off-Grid Energy Storage Integrated Machine: Your Ultimate ...

Old-school solar setups required more gadgets than a Bond movie. Today's integrated machines combine panels, batteries, and smart tech into one sleek unit. Think of it ...

[WhatsApp](#)



What is a photovoltaic storage and charging integrated machine ...

refers to the power of the photovoltaic power generation part of the photovoltaic storage and charging machine, usually in kilowatts (kW). This parameter determines the ...

[WhatsApp](#)



[Solar Integration: Inverters and Grid Services Basics](#)

More total power will be needed to create the same amount of "real" power--the power the loads can absorb. To counteract this, utilities supply reactive power, which brings the voltage and ...

[WhatsApp](#)

Energy Storage System Buyer's Guide 2025 , Solar Builder

Each Savant Power Storage 20 Battery can support up to two Savant Power Inverters, allowing for an increased solar capacity. The cabinet and modular battery tray design make installation ...

[WhatsApp](#)





A review of hybrid renewable energy systems: Solar and wind ...

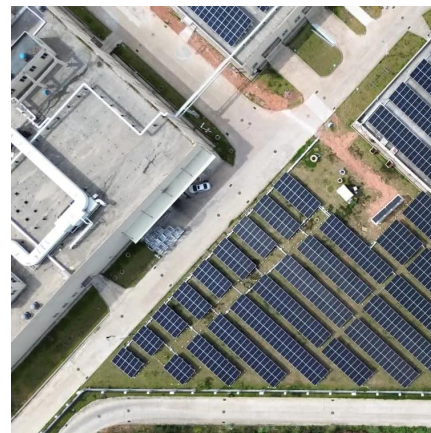
2. Singel energy sources technologies 2.1. Solar photovoltaic power systems Solar photovoltaic (PV) power systems are a cornerstone of renewable energy technology, ...

[WhatsApp](#)

How many watts does the solar energy storage and control ...

Integrated machines come in various configurations, including all-in-one units, modular systems, and those with external batteries. Essentially, larger and more complex ...

[WhatsApp](#)



48V 5000W Inverter, Including Solar Controller, Pure Sine Maximum ...

Amazon : 48V 5000W Inverter, Including Solar Controller, Pure Sine Maximum Off-Grid Smart Integrated Machine, Suitable for 48V Lead-Acid/Lithium Battery : Patio, Lawn & ...

[WhatsApp](#)

Contact Us

For catalog requests, pricing, or partnerships, please visit:
<https://www.straighta.co.za>