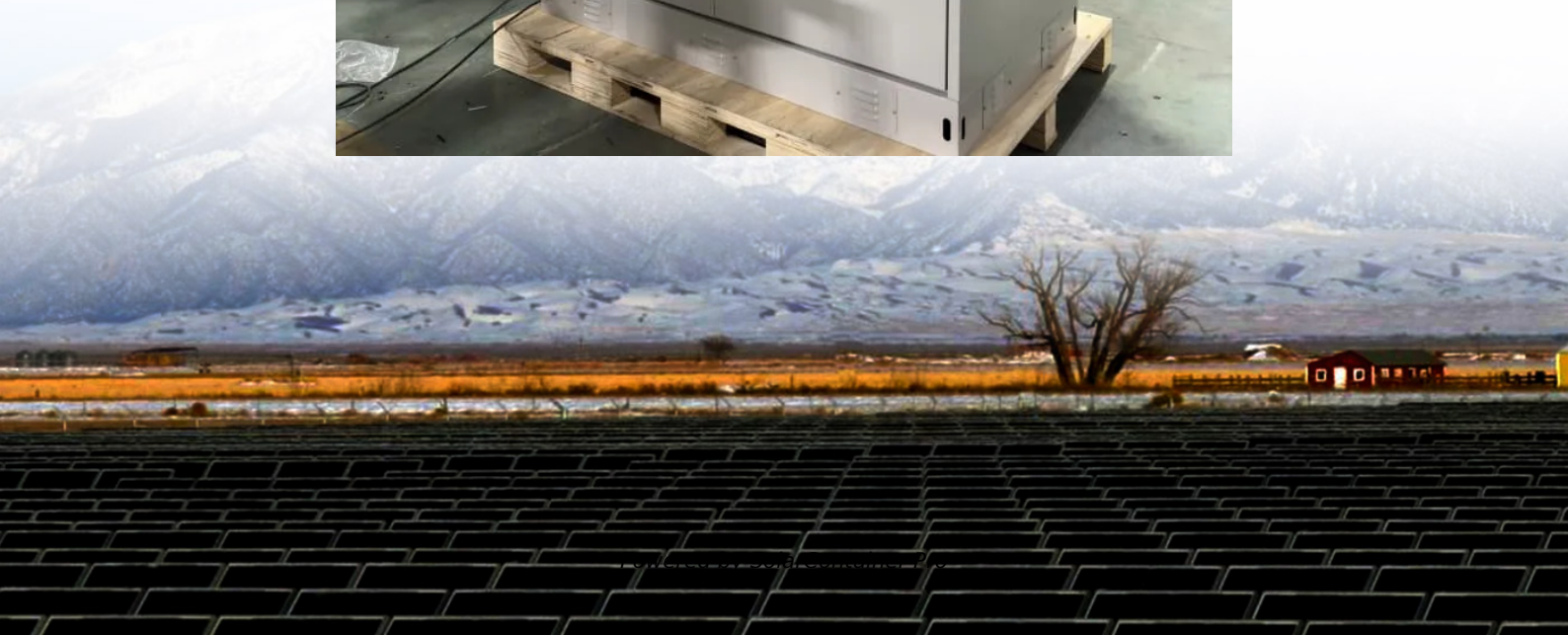


How much is the EMS hybrid power supply for Sudan s communication base station





Overview

What is a hybrid electric power system?

The Hybrid Electric Power Systems (HEPS) product family can supply cost-effective power to installations, as well as, mobile power for vehicles, remote camps, forward operating bases, communication or surveillance posts, expeditionary or emergency operations and weapon systems.

What is a hybrid energy storage system?

Hybrid energy storage systems using battery energy storage has evolved tremendously for the past two decades especially in the area of car manufacturing either in a fully hybrid electric car or hybrid car that use battery energy storage with internal petrol combustion engine .

What is unique about this research based on hybrid energy storage?

The interesting or unique about this research compared to other research-based on hybrid energy storage is to apply hybrid energy storage in the poor grid and bad grid scenarios which are not discussed in another research before.

How many power conversion modules should a base station have?

The sum of the load current of the base station is at 6667 W and the rectifier efficiency is at 96% where the capacity required is 6944 W. The capacity of a single AC/DC power conversion module is 3000 W, and thus two power conversion modules should be configured.

How much power does a base station use?

Suppose the load power consumption of a base station is 2000 W by using the lithium-ion battery and the corresponding load current is approximately 41.67A (for simplification, here the 2000W power consumption includes the power consumption of the temperature control equipment divided by 48V per battery module).



Which hybrid system has the lowest CAPEX cost?

We can observe that the 4/96 hybrid configuration has the lowest CAPEX cost among other hybrid configurations and also other battery types namely the VRLA 12V and 0/100 12V with replacement cost being considered OPEX. The system with the lithium-ion battery has the highest cost and using VRLA is cheaper.



How much is the EMS hybrid power supply for Sudan s communication



[Chapter 5 Communication Questions Flashcards . Quizlet](#)

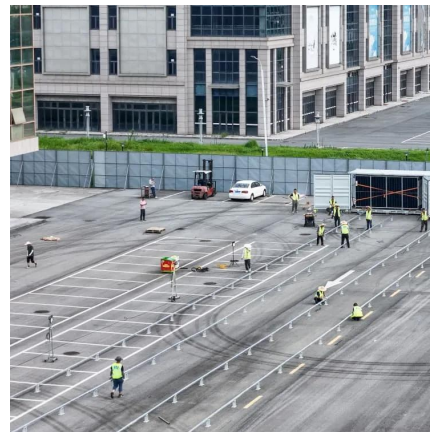
An EMS base station a. generally uses a low output of between 50 and 75 watts of transmission power. b. should be located in a low-lying area, free from potentially damaging high winds. c. ...

[WhatsApp](#)

[Power Supply Architectures for Drones](#)

Hybrid power supply system is also a solution of choice. Combining battery with different sources such as fuel cell, solar cells, and supercapacitor allows the system to benefit from sources

[WhatsApp](#)



5G Base Station Hybrid Power Supply , Huijue Group E-Site

Why Current Power Solutions Fail 5G Infrastructure? As 5G base stations multiply globally, their energy appetite threatens to devour operational efficiency. Did you know a ...

[WhatsApp](#)



Communication Base Station Smart Hybrid PV Power Supply ...

The Ipandee hybrid PV Direct Current (DC) Power Supply System is a green energy power supply solution specifically designed for communication



operators to save energy, reduce carbon ...

[WhatsApp](#)



Intelligent hybrid power system

The hybrid power supply has the characteristics of wide voltage input, high-efficiency modules, support for mixed insertion, and centralized monitoring with multiple interfaces of RS485 and ...

[WhatsApp](#)



Energy Cost Reduction for Telecommunication Towers Using ...

Green technology in wireless communication is referred to using alternative or renewable energy sources as the power supply on telecom base station sites. Among green technologies that ...

[WhatsApp](#)



Dispatching strategy of base station backup power supply ...

Dispatching strategy of base station backup power supply considering communication flow variation Zheyu OUYANG and Yanchi ZHANG Shanghai Dianji University, Shanghai 200240, ...

[WhatsApp](#)





Energy Cost Reduction for Telecommunication Towers Using ...

The objective of this study is to develop a hybrid energy storage system under energy efficiency initiatives for telecom towers in the poor grid and bad grid scenario to further reduce the capital ...

[WhatsApp](#)



Envelope Tracking Power Supply for Energy Saving of Mobile

The power consumption of the RF PA in wireless communication base stations are too large and the efficiency of RF PA is too low. In this paper, a new hybrid ET power supply ...

[WhatsApp](#)

[Optimization of Communication Base Station Battery ...](#)

In the communication power supply field, base station interruptions may occur due to sudden natural disasters or unstable power supplies. This work studies the optimization of ...

[WhatsApp](#)



Renewable Micro Hybrid System of Solar Panel and Wind ...

The aim of this study is to search for the optimum hybrid power system composed of mainly solar panels and wind turbines needed to meet the load demand of the telecom sites in ...

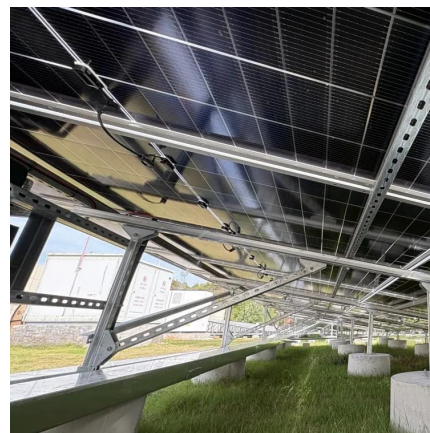
[WhatsApp](#)



A comprehensive review of electrochemical hybrid power supply ...

However, the electrochemical power supply system of UAV is a critical issue in terms of its energy/power densities and lifetime for service endurance. In this paper, the ...

[WhatsApp](#)



Base Station Hybrid Power Supply: The Future of Sustainable

Recent GSMA data reveals hybrid systems could slash these costs by up to 65% - if properly implemented. The crux lies in energy source volatility versus constant power ...

[WhatsApp](#)

[Communication Base Station Energy Power Supply System](#)

The wind-solar-diesel hybrid power supply system of the communication base station is composed of a wind turbine, a solar cell module, an integrated controller for hybrid energy ...

[WhatsApp](#)





[Hybrid Power Systems - INTRACOM DEFENSE](#)

The Hybrid Electric Power Systems (HEPS) product family can supply cost-effective power to installations, as well as, mobile power for vehicles, remote camps, forward operating bases, ...

[WhatsApp](#)

Telecom Base Sites , Hybrid Energy Mobile Wireless Station

Discover the power of our Hybrid Energy Mobile Wireless Station, offering seamless, energy-efficient telecom base site solutions. Designed for versatility with solar, wind, and diesel ...

[WhatsApp](#)



[Wireless Telecom Base Site Solutions , Hybrid Power](#)

It is an intelligent hybrid power base station cabinet that integrates the photovoltaic, wind turbine, and battery storage to provide reliable power to remote or off-grid areas with advanced ...

[WhatsApp](#)

Contact Us

For catalog requests, pricing, or partnerships, please visit:
<https://www.straightta.co.za>