

How much electricity does a 5G base station require per day





Overview

One 5G base station is estimated to consume about as much power as 73 households (6), and 3x as much as the previous generation of base stations (5), (7). When base stations, data centers and device.

How much power does a 5G base station use?

“A 5G base station is generally expected to consume roughly three times as much power as a 4G base station. And more 5G base stations are needed to cover the same area,” -IEEE Spectrum, 5G’s Waveform Is a Battery Vampire.

Are 5G base stations causing more energy consumption?

However, Li says 5G base stations are carrying five times the traffic as when equipped with only 4G, pushing up power consumption. The carrier is seeking subsidies from the Chinese government to help with the increased energy usage.

Is 5G more energy efficient than 4G?

Although the absolute value of the power consumption of 5G base stations is increasing, their energy efficiency ratio is much lower than that of 4G stations. In other words, with the same power consumption, the network capacity of 5G will be as dozens of times larger than 4G, so the power consumption per bit is sharply reduced.

How much power does a 5G network consume?

In China, for example, total power consumption by telecoms networks exceeds 50 billion kWh. Once 5G networks are deployed, the power consumption of telecoms networks in China will exceed an estimated 100 billion kWh, generating annual carbon emissions of 27.2 billion kg.”.

How much energy does a 5G small cell BS consume?

Simulation results reveal that more than 50% of the energy is consumed by the computation power at 5G small cell BS’s. Moreover, the computation power of 5G small cell BS can approach 800 watt when the massive MIMO



(e.g., 128 antennas) is deployed to transmit high volume traffic.

Why does 5G use so much power?

The main factor behind this increase in 5G power consumption is the high power usage of the active antenna unit (AAU). Under a full workload, a single station uses nearly 3700W. This necessitates a number of updates to existing networks, such as more powerful supplies and increased performance output from supporting facilities.



How much electricity does a 5G base station require per day



[Optimal configuration of 5G base station energy storage](#)

it, in the case of a power failure. As the number of 5G base stations, and their power consumption increase significantly compared with that of 4G base stations, the demand for backup batteries ...

[WhatsApp](#)

Why does 5g base station consume so much power and how to ...

How much electricity will this cost? According to industry insiders' estimates, 100000 5G base stations require at least 2 billion yuan in electricity bills per year, so 8 million 5G base ...

[WhatsApp](#)



[5G Base Stations: The Energy Consumption Challenge](#)

However, high energy-efficiency does not necessarily mean lower energy/electricity consumption for 5G base stations. Besides, the adoption of C-band or mmWave spectrum requires more ...

[WhatsApp](#)



The Long Road to Sobriety: Estimating the Operational ...

The modern end-user devices with newer mobile generations like 5G are becoming more and more energy-efficient in terms of energy per



transmitted bit. However, these energy gains can ...

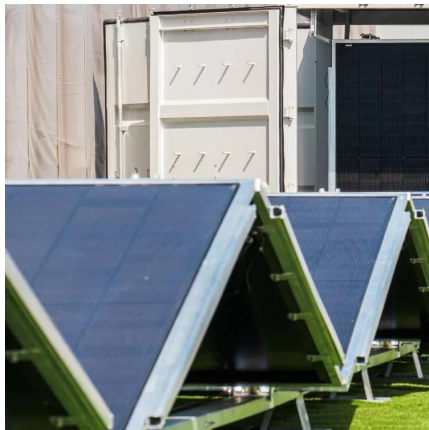
[WhatsApp](#)



Front Line Data Study about 5G Power Consumption , You need ...

Although the absolute value of the power consumption of 5G base stations is increasing, their energy efficiency ratio is much lower than that of 4G stations. In other words, with the same ...

[WhatsApp](#)



A technical look at 5G energy consumption and performance

Figure 2: Varying network traffic load during the day. The highlighted part shows the gaps in data packet transmissions during a high-traffic situation. To understand this, we ...

[WhatsApp](#)



[5G Transmit Power and Antenna radiation](#)

To keep the power density per MHz similar to LTE systems, the 100MHz 3.5GHz spectrum will require 5x 80 W, which is not easy to be achieved. 5G trials need to define a realistic output ...

[WhatsApp](#)





Energy Consumption of 5G, Wireless Systems and the Digital ...

"A 5G base station is generally expected to consume roughly three times as much power as a 4G base station. And more 5G base stations are needed to cover the same area," -IEEE ...

[WhatsApp](#)



How Much Power Does a 5G Base Station Consume? - Smart Solar

The rise of 5G technology brings faster speeds and lower latency, but it also raises questions about its energy consumption. As 5G networks are rolled out across the globe, it is important ...

[WhatsApp](#)

5G base stations use a lot more energy than 4G base stations: MTN

According to Huawei data on RRU/BBU needs per site, the typical 5G site has power needs of over 11.5 kilowatts, up nearly 70% from a base station deploying a mix of 2G, ...

[WhatsApp](#)



What is a base station and how are 4G/5G base stations different?

The architecture of the 5G network must enable sophisticated applications, which means the base stations design required must also be specialist. A base station is referred to ...

[WhatsApp](#)



Contact Us

For catalog requests, pricing, or partnerships, please visit:
<https://www.straightta.co.za>