

How much electricity does a 5G base station require





Overview

One 5G base station is estimated to consume about as much power as 73 households (6), and 3x as much as the previous generation of base stations (5), (7). When base stations, data centers and device.

How much power does a 5G base station use?

"A 5G base station is generally expected to consume roughly three times as much power as a 4G base station. And more 5G base stations are needed to cover the same area," -IEEE Spectrum, 5G's Waveform Is a Battery Vampire.

Are 5G base stations causing more energy consumption?

However, Li says 5G base stations are carrying five times the traffic as when equipped with only 4G, pushing up power consumption. The carrier is seeking subsidies from the Chinese government to help with the increased energy usage.

Does China Mobile have a 5G base station?

China Mobile has tried using lower cost deployments of MIMO antennas, specifically 32T32R and sometimes 8T8R rather than 64T64R, according to MTN. However, Li says 5G base stations are carrying five times the traffic as when equipped with only 4G, pushing up power consumption.

How much power does 5G power use?

The site's average load is 1.4 kW, with peak loads of 2.7 kW. However, the AC power limit is 1.6 kW. When 5G services were added in tests, peak loads exceeded the power limit. 5G Power's intelligent peak shaving technology leverages smart energy scheduling algorithms of software-defined power supply and intelligent energy storage.

How much energy does a 5G small cell BS consume?

Simulation results reveal that more than 50% of the energy is consumed by the computation power at 5G small cell BS's. Moreover, the computation power of 5G small cell BS can approach 800 watt when the massive MIMO



(e.g., 128 antennas) is deployed to transmit high volume traffic.

Will 5G consume a lot of energy?

“A lurking threat behind the promise of 5G delivering up to 1,000 times as much data as today’s networks is that 5G could also consume up to 1,000 times as much energy,” Dexter Johnson in the IEEE Spectrum. Why?



How much electricity does a 5G base station require



How Much Power Does 5G Base Station Consume? , Huijue ...

Have you ever wondered how much energy our hyper-connected world is consuming? 5G base stations, the backbone of next-gen connectivity, now draw 3-4 times more power than their 4G ...

[WhatsApp](#)

5G Power: Creating a green grid that slashes costs, emissions

In the 5G era, the maximum energy consumption of a 64T64R active antenna unit (AAU) will be an estimated 1 to 1.4 kW to 2 kW for a baseband unit (BBU). Base stations with multiple ...

[WhatsApp](#)



5g base stations require energy storage batteries

Why do 5G base stations need backup batteries? As the number of 5G base stations, and their power consumption increase significantly compared with that of 4G base stations, the demand ...

[WhatsApp](#)



How Much Power Does 5G Base Station Consume? , Huijue ...

The Silent Energy Crisis in Mobile Networks Have you ever wondered how much energy our hyper-connected world is consuming? 5G base stations,



the backbone of next-gen ...

[WhatsApp](#)



Modelling the 5G Energy Consumption using Real-world ...

This paper proposes a novel 5G base stations energy consumption modelling method by learning from a real-world dataset used in the ITU 5G Base Station Energy Consumption Modelling ...

[WhatsApp](#)



A technical look at 5G energy consumption and performance

In this post, we explore the energy saving features of 5G New Radio and how this enables operators to build denser networks, meet performance demands and maintain low 5G ...

[WhatsApp](#)



5G base stations use a lot more energy than 4G base stations: MTN

A typical 5G base station consumes up to twice or more the power of a 4G base station, writes MTN Consulting Chief Analyst Matt Walker in a new report entitled " Operators ...

[WhatsApp](#)

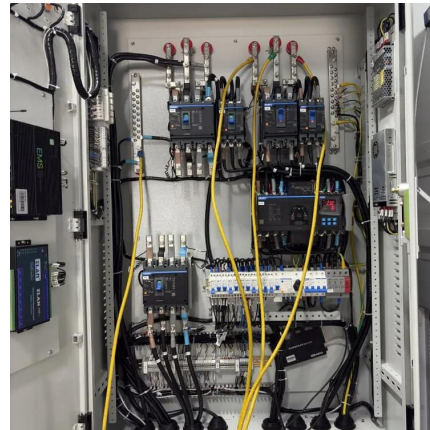




Energy Consumption of 5G, Wireless Systems and the Digital ...

"A 5G base station is generally expected to consume roughly three times as much power as a 4G base station. And more 5G base stations are needed to cover the same area," -IEEE ...

[WhatsApp](#)



The Impact of 5G Base Station Construction on the Demand for ...

The chips, power amplifiers, and other components in a 5G base station generate much more heat than those in a typical 4G setup. Furthermore, the deployment of edge ...

[WhatsApp](#)



How Much Power Does a 5G Base Station Consume? - Smart Solar

On average, a 5G base station consumes between 1,000 to 3,000 watts. This is significantly higher than 4G base stations, which typically consume 500 to 1,500 watts.

[WhatsApp](#)



Why does 5g base station consume so much power and how to ...

According to industry insiders' estimates, 100000 5G base stations require at least 2 billion yuan in electricity bills per year, so 8 million 5G base stations require at least 160 billion ...

[WhatsApp](#)



[5G Base Station Growth: How Many Are Active?..](#) [PatentPC](#)

Energy efficiency improvements in 5G base stations are projected to reduce power consumption by 15-20% per year One of the biggest challenges with 5G is its high power consumption, but ...

[WhatsApp](#)



Contact Us

For catalog requests, pricing, or partnerships, please visit:
<https://www.straighta.co.za>