

How much electricity does a 545w photovoltaic panel generate per hour





Overview

How many kWh does a solar panel produce?

Consider a solar panel with a power output of 300 watts and six hours of direct sunlight per day. The formula is as follows: $300W \times 6 = 1800$ watt-hours or 1.8 kWh. Using this solar power calculator kWh formula, you can determine energy production on a weekly, monthly, or yearly basis by multiplying the daily watt-hours by the respective periods.

How do you calculate kWh generated by solar panels?

To calculate the daily kWh generated by solar panels, use the following steps:

1. Determine the Size of One Solar Panel Multiply the size of one solar panel in square meters by 1,000 to convert it to square centimeters. Example: If a solar panel is 1.6 square meters, the calculation would be $1.6 \times 1,000 = 1,600$ square centimeters.
- 2.

How many kWh does a 250 watt solar panel produce?

Typically, a 250 watt solar panel running at its maximum efficiency for 7 hours a day can provide you with 1.75 kWh of output. Again, it will depend on the sunlight and the positioning of the panel. Dive into further reading on the pros and cons of solar energy to determine the average solar panel output that can meet your needs.

How to calculate solar panel output per month?

Moreover, to estimate the monthly solar panel output, multiply the daily kWh by the number of days in a month: Example: If the daily output is 1.44 kWh, the monthly output would be $1.44 \times 30 = 43.2$ kWh per month.

5. Output Per Square Meter of Solar Panels.

How many kWh does a 400W solar panel generate per month?

In states with sunnier climates like California, Arizona, and Florida, where the average daily peak sun hours are 5.25 or more, a 400W solar panel can



generate 63 kWh or more of electricity per month. Also See: [How to Calculate Solar Panel KWp \(KWh Vs. KWp + Meanings\)](#) [How many kWh Per Year do Solar Panels Generate?](#)

.

How many kWh does a 300W solar panel produce a day?

We can see that a 300W solar panel in Texas will produce a little more than 1 kWh every day (1.11 kWh/day, to be exact). We can calculate the daily kW solar panel generation for any panel at any location using this formula. Probably, the most difficult thing is to figure out how much sun you get at your location (in terms of peak sun hours).



How much electricity does a 545w photovoltaic panel generate per



[How Much Energy Does A Solar Panel Produce? - Renogy US](#)

Is solar power worth it? It starts with understanding how much energy a solar panel actually produces. Uncover the real numbers, calculate your potential savings, and make an informed ...

[WhatsApp](#)

How Much Power Does a Solar Panel Produce? By Wattage, KW ...

Understanding how much power does a solar panel produce by wattage, kilowatt hours, size and more, can help you decide on the right size photovoltaic (PV) system for your ...

[WhatsApp](#)



Solar Panel Watts Per Square Foot: 'We (Finally) Did The Math'

As we have seen, the average watts per square foot that solar panels produce is 17.25 watts per square foot. Tesla roof panels are quite a bit above average (8.9%+, to be exact).

[WhatsApp](#)

How many MWh of solar energy comes from a MW of solar panels?

This means that solar panels will generate 24.5% of their potential output, assuming the sun shone perfectly brightly 24 hours a day. 1 megawatt



(MW) of solar panels will generate ...

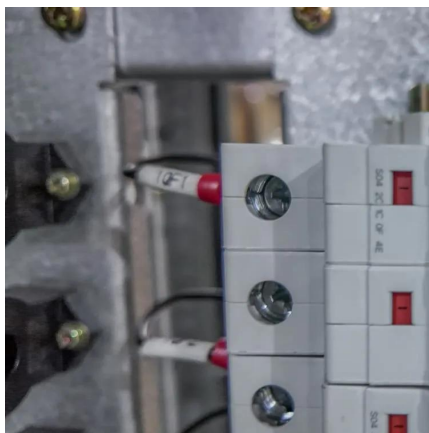
[WhatsApp](#)



How to Calculate Daily kWh from Your Solar Panels - EcoVault

Solar panels are a powerhouse of renewable energy, but figuring out exactly how much electricity they generate daily can feel overwhelming. In this guide, we 'll simplify the ...

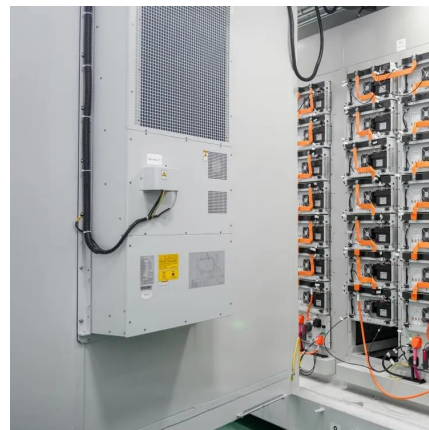
[WhatsApp](#)



How Many kWh Does A Solar Panel Produce Per Day?

Daily kWh Production = Solar Panel Wattage × Peak Sun Hours × 0.75 / 1000. As you can see, the larger the panels and the sunnier the area, the more kWh will a solar panel produce.

[WhatsApp](#)



200W Solar Panel Output: (Amps, Watts, Volts) - Dot Watts®

How much power does a 200W solar panel produce per day? A 200W solar panel produces about 800 watts of power per day, considering 5kW/m² of total solar irradiance in a ...

[WhatsApp](#)





Contact Us

For catalog requests, pricing, or partnerships, please visit:
<https://www.straighta.co.za>