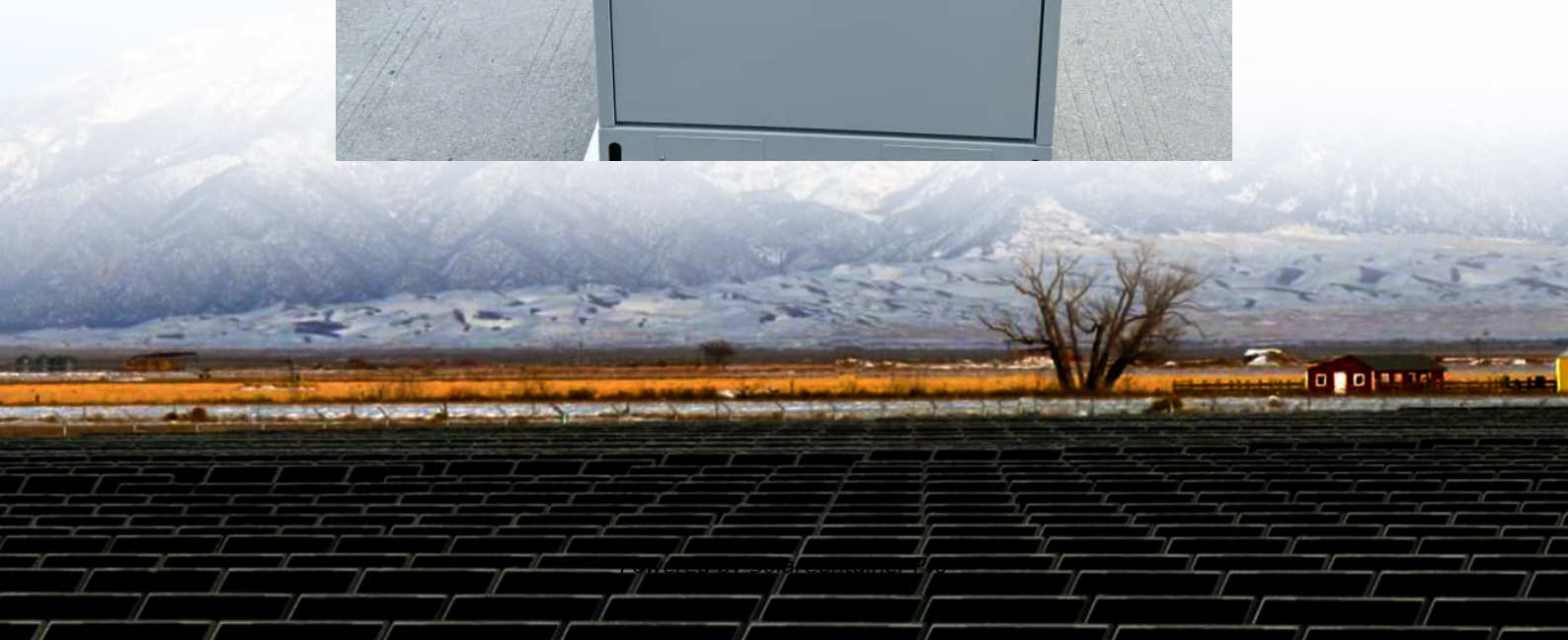


How much electricity can a 150ah outdoor battery cabinet store





Overview

A 24V 150ah battery holds twice as many watts as a 12V. So you can load up to 3600 watts of appliances and the battery will last for 4.5 hours, same as a 12V. You can connect two 12V batteries in a series to get 24V. This will not increase the amps though. How much power is stored in a 12V 150ah battery?

Hence, the amount of power stored in a 24V, 150Ah battery will be $24V \times 150Ah = 3600 \text{ Watt-hour}$ (3.6 kWh). And the amount of power stored in a 12V, 150Ah battery will be $12V \times 150Ah = 1800 \text{ Watt-hour}$ (1.8 kWh). Refer to the table below for a better understanding of the comparison between the power store in 12V 150AH and 24V, 150 Ah batteries.

How long does a 150ah battery last?

With a 150ah battery and 12V, we can calculate backup time like this: $\text{Backup Time} = 150Ah \times 12V / (150W + 120W + 20W) \approx 6.2 \text{ hours}$ The battery can run appliances totaling 290W for about 6.2 hours. This keeps us connected and comfortable when there's no power. To make a 150ah 12V battery last longer, manage how much power you use.

Is a 150ah battery enough for a backup battery?

Many consider a 150ah battery as large enough. But is this sufficient as backup?

And how long is it going to last?

A 12 150ah backup battery is going to last 5 to 6 hours before it runs out of power, provided the battery is fully charged and runs a load of 300 watts an hour. The lower the hourly watt load, the longer the battery will run.

How much battery capacity do I Need?

For example, if your daily power consumption is 10kWh and you want a backup power option for three days, the total battery capacity required would be 30kWh. It is important to note that battery systems are not 100% efficient,



so it is recommended to add a safety margin of around 20% to the calculated total battery capacity.

How many ah should a 150ah battery be used?

If you have a lead acid 150ah battery, you should only use 50% of the capacity. Once the capacity drops to 75ah, you should recharge the battery. You can run the battery down until it is empty. But doing that will wear the battery out quickly. It is better to buy another 150ah battery so you can increase the available backup power.

Can a 150ah battery run a TV?

A 150Ah battery can power many home appliances at once. This includes fans, lights, and your Wi-Fi router. It can also run a TV and small refrigerators if they don't use too much power. How long will a 150Ah battery last during a power cut?

How long a 150Ah battery lasts depends on how much power your appliances use.



How much electricity can a 150ah outdoor battery cabinet store



[Grid-Scale Battery Storage: Frequently Asked Questions](#)

What is grid-scale battery storage? Battery storage is a technology that enables power system operators and utilities to store energy for later use. A battery energy storage system (BESS) is ...

[WhatsApp](#)

[Is 150Ah Battery Enough for Home? \(How to Choose\)](#)

If you're wondering if a 150Ah battery is enough for your home or how many watts it is, the answer is probably yes. This battery size is typically used in RVs and can provide ...

[WhatsApp](#)



What is the 150ah Battery Backup Time? Here's How to Calculate it

Generally, an inverter battery is expected to last around 5 to 10 hours when fully charged. However, you can also calculate the accurate 15Ah battery backup time with the formula ...

[WhatsApp](#)

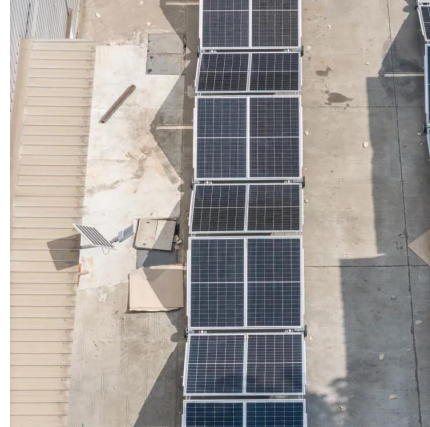
How much electricity does the energy storage cabinet store?

1. Energy storage cabinets are devices that can store electricity for later use, with varying capacities depending on the technology and



design used. The amount of electricity ...

[WhatsApp](#)



[How much electricity can an outdoor power supply store](#)

The total watt-hour rating determines how much electricity can be stored, with units ranging from a few hundred watt-hours to several thousand depending on the design and ...

[WhatsApp](#)



[How much electricity can be stored outdoors .](#)
[NenPower](#)

The overall capacity of outdoor electricity storage systems is influenced by multiple factors including temperature, humidity, and battery technology used. Higher temperatures can ...

[WhatsApp](#)



Outdoor Battery Cabinets: A Smart Choice for Reliable Energy ...

When selecting an outdoor battery cabinet, there are several factors to consider to ensure it meets your specific needs: Size and Capacity: The size of the cabinet should be ...

[WhatsApp](#)

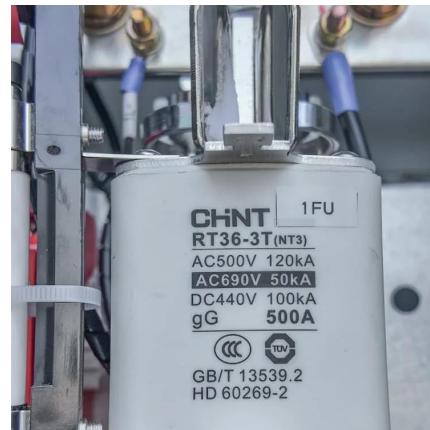




[ESTEL Outdoor Battery Cabinet Buying Guide for 2025](#)

Before you dive into choosing a battery cabinet, it's important to figure out how much energy you actually need to store. Start by asking yourself a few questions: How much ...

[WhatsApp](#)



How Long Will A 100Ah Battery Last? 100W, 400W + Calculator

Power (W) = Current (I) × Voltage (V) A 100Ah battery can last anywhere from 120 hours (running a 10W appliance) to 36 minutes (running a 2,000W appliance). 100Ah 12V battery has a ...

[WhatsApp](#)

Outdoor Constant-temperature Battery Cabinet , BULLSPower®

Name: Outdoor Constant-temperature Battery Cabinet Introduction: Constant-temperature Battery Cabinet is a good cabinet used for outdoor battery, with the wind, rain, sun, corrosion ...

[WhatsApp](#)



Contact Us

For catalog requests, pricing, or partnerships, please visit:
<https://www.straighta.co.za>