

# How many watts of solar power are used





## Overview

---

Contemporary solar panels typically range in wattage from 200 to 400 watts, although some high-efficiency models can yield even more. This variation is largely attributable to innovations in photovoltaic technology, which have allowed manufacturers to produce more efficient solar cells. What is a solar panel wattage?

Look at different panels and see what the wattages are. The solar panel wattage is also known as the power rating, and it's a panel's electrical output under ideal conditions. This is measured in watts (W). A panel will usually produce between 250 and 400 watts of power. For the equation later on, assume an average of 320 W per panel.

How much power does a solar panel use?

Solar panel power ratings range from 250W to 450W. Based on solar.com sales data, 400W is the most popular power rating and provides a great balance of output and Price Per Watt (PPW). If you have limited roof space, you may consider a higher power rating to use fewer panels. If you want to spend less per panel, you may consider a lower wattage.

How many Watts Does a solar panel need?

In most cases, devices will usually require over 100 volts but below 250 volts. The difference is usually present in amperes. Use the information presented below to see how many watts is necessary for your appliance. It is important to know your specific needs when looking to purchase solar panels.

How many watts can a 400 watt solar panel produce?

A 100-watt panel can produce 100 watts per hour in direct sunlight. A 400-watt panel can generate 400 watts per hour under the same conditions. This doesn't mean they'll produce that amount all day, output varies with weather, shade, and panel orientation. Solar Power Meter Digital Solar Energy Meter Radiation Measuremen.



How many kWh does a 250 watt solar panel produce?

Typically, a 250 watt solar panel running at its maximum efficiency for 7 hours a day can provide you with 1.75 kWh of output. Again, it will depend on the sunlight and the positioning of the panel. Dive into further reading on the pros and cons of solar energy to determine the average solar panel output that can meet your needs.

How do you calculate solar panel wattage?

Divide the average daily wattage usage by the average sunlight hours to measure solar panel wattage. Moreover, panel output efficiency directly impacts watts and the system's overall capacity. Nevertheless, energy usage, sunshine exposure, system capacity, panel types and materials all have an impact on the calculation.



## How many watts of solar power are used

---



### How Much Power Does a Solar Panel Produce? By Wattage, KW ...

One crucial point is to remember to account for kilowatt-hours, or 1,000 watts of electricity used per hour. A few other important points that relate to this concept of energy ...

[WhatsApp](#)

### Here's Exactly How Many Solar Panels to Buy to Power a House

To figure out exactly how many panels are required to run a home, you will need to consider your annual energy usage, the solar panel wattage, and the production ratio. ...

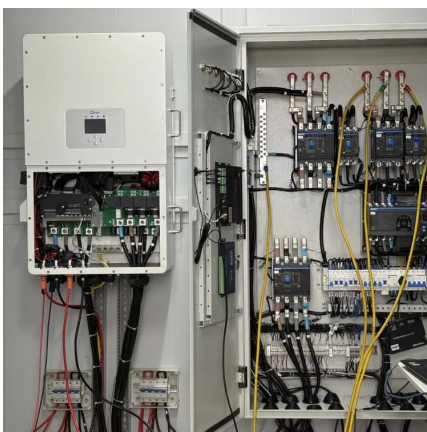
[WhatsApp](#)



### How Many Solar Panels It May Take To Power Your Home (And ...

16 hours ago· Setting up your house to be entirely solar powered is an expensive exercise, and how many panels you need depends on your location and power requirements.

[WhatsApp](#)



### Monitor how many watts of solar panels are used , NenPower

To monitor the energy production of solar panels accurately, a few methods and tools are available. 1. Solar panel wattage is measured





using a solar meter or monitoring ...

[WhatsApp](#)



### How Many Solar Panels Do I Need To Power a House in 2025?

Solar panel power ratings range from 250W to 450W. Based on solar sales data, 400W is the most popular power rating and provides a great balance of output and Price Per Watt (PPW).

[WhatsApp](#)



### How many watts of solar energy is commonly used? , NenPower

1. The average residential solar panel system typically generates between 250 to 400 watts per panel, leading to a standard installation producing anywhere from 3,000 to ...

[WhatsApp](#)



### [Standard Solar Panel Sizes And Wattages \(100W-500W ...](#)

To bridge that gap of very useful knowledge needed, we have compared and averaged the sizes of 100-watt to 500-watt solar panels available on the market. The goal here is to get to the ...

[WhatsApp](#)



### **Solar Panel Watts Per Square Foot: 'We (Finally) Did The Math'**

Alright, a lot has been said about solar panel watts per square foot. Everybody agrees this is a very important specification. There is a lot of disagreement on how many watts can solar ...

[WhatsApp](#)

## **Contact Us**

---

For catalog requests, pricing, or partnerships, please visit:  
<https://www.straighta.co.za>