

# How many watts of solar panels are suitable for 12v 44ah





## Overview

---

Note: If you already have a solar panel and want to know how long it will take to charge your battery, use our solar battery charge time calculator.

1. Enter battery Capacity in amp-hours (Ah): For a 100ah battery, enter 100. If the battery capacity is mentioned in watt-hours (Wh), divide Wh by the battery's voltage (v). 2. Enter battery.

Here's a chart about what size solar panel you need to charge different capacity 12v lead-acid and Lithium (LiFePO4) batteries in 6 peak sun hours using an MPPT charge controller.

Follow these 6 steps to calculate the estimated required solar panel size to recharge your battery in desired time frame.

Here's a chart about what size solar panel you need to charge different capacity 24v lead-acid & Lithium (LiFePO4) batteries in 6 peak sun hours using an MPPT charge controller.

A 300-watt solar panel or three 100-watt panels are recommended. This setup ensures efficient charging and meets energy calculation needs effectively. It is essential to consider the solar charge controller as well. How many watts a solar panel to charge a 12V battery?

You need around 400-550 watts of solar panels to charge most of the 12V lithium (LiFePO4) batteries from 100% depth of discharge in 6 peak sun hours with an MPPT charge controller. What Size Solar Panel To Charge 24v Battery?

.

How many watts a solar panel to charge 130ah battery?

You need around 380 watts of solar panels to charge a 12V 130ah Lithium (LiFePO4) battery from 100% depth in 5 peak sun hours with an MPPT charge controller. What Size Solar Panel To Charge 140Ah Battery?

.



How many watts do I need to charge a 12V 20Ah battery?

You need around 40 watts of solar panels to charge a 12V 20ah lead-acid battery from 50% depth of discharge in 4 peak sun hours with an MPPT charge controller. You need around 70 watts of solar panels to charge a 12V 20ah Lithium (LiFePO4) battery from 100% depth of discharge in 4 peak sun hours with an MPPT charge controller.

How many solar panels do I need to charge a 50Ah battery?

You need around 180 watts of solar panels to charge a 12V 50ah Lithium (LiFePO4) battery from 100% depth of discharge in 4 peak sun hours with an MPPT charge controller. Related Post: [How Long Will A 50Ah Battery Last?](#)

.

How many watts a solar panel to charge a lithium battery?

You need around 1600-2000 watts of solar panels to charge most of the 48V lithium batteries from 100% depth of discharge in 6 peak sun hours with an MPPT charge controller. [What Size Solar Panel To Charge 120Ah Battery?](#)

.

How do I choose the right wattage for my solar panel?

Selecting the right wattage for your solar panel is crucial. Choose a panel based on these requirements: Battery Size: Larger batteries, such as a 200Ah battery, require more power. A 200Ah battery needs approximately 2,400 watt-hours (200Ah x 12V). Sunlight Hours: Assess local sunlight availability.



## How many watts of solar panels are suitable for 12v 44ah

---



### How Many Solar Panels to Charge a 12V Battery: Calculate Your ...

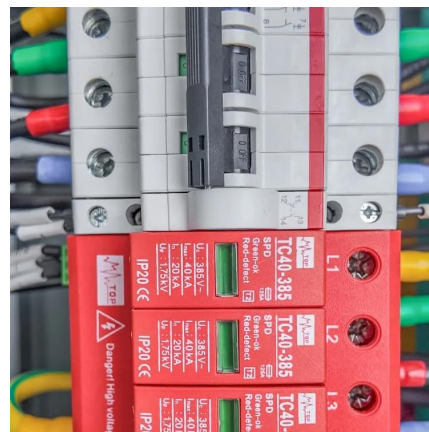
Explore the types of 12V batteries, solar panel options, and crucial wattage ratings. With helpful calculations and real-world examples, learn to determine the right number of ...

[WhatsApp](#)

### How Many Watt Solar Panel to Charge 12 Volt Battery: Calculate ...

Unlock the power of solar energy with our comprehensive guide on how many watts are needed to charge a 12-volt battery. Learn about different solar panel types, key ...

[WhatsApp](#)



### Size Matters: Choosing Solar Panels to Keep Your RV's Batteries ...

Never run out of battery power boondocking! Size solar panels perfectly to keep RV batteries charged. Calculate needs, choose solar kits, reduce usage, go off-grid!

[WhatsApp](#)

### How Many Solar Panels Are Needed To Charge A 12V Battery: A ...

To charge a 12-volt battery with a capacity of 100 amp-hours at a rate of 20 amps, you need 240 watts of solar power. You can use one



300-watt solar panel or three 100-watt ...

[WhatsApp](#)



### What Size Solar Panel To Charge 100Ah Battery? (Calculator)

You just input how many volt battery you have (12V, 24V, 48V) and type of battery (lithium, deep cycle, lead-acid), and how quickly you want the battery to be charged, and the calculator will ...

[WhatsApp](#)



### [What Size Charge Controller for 500W Solar Panel?](#)

When a solar panel charges a battery, you need a charge controller to prevent overloading. If you have a 500W solar panel for instance, the charge controller must be the right size to match the ...

[WhatsApp](#)



### How Many Solar Panel Watts for 12V Battery Charging: A ...

In summary, a 100-watt solar panel can charge a 12V battery, but factors like battery capacity and sunlight availability affect this. For optimal performance, consider using a ...

[WhatsApp](#)





## What Size Solar Panel Do I Need to Charge a 12v Battery?

Discover the right solar panel size to efficiently charge your 12V battery. Learn how to calculate wattage, consider battery capacity, and optimize your solar charging setup for maximum ...

[WhatsApp](#)



## [How Many Solar Panels Required to Charge 300ah Battery?](#)

The charge controller size depends on the voltage of the solar panels. Divide the total solar panel watts by its voltage and add at least 20% to the total, and you have the charge controller size. ...

[WhatsApp](#)

## [How Many Amps Do Solar Panels Produce? \(Free Calculator\)](#)

All this while taking into consideration 22% losses. How Many Amps Does a 300-watt Solar Panel Produce? A 300-watt solar panel will produce 1.95 amps of AC current in the ...

[WhatsApp](#)



## How many watts does a 12 volt solar panel require? , NenPower

A 12-volt solar panel typically ranges from 100 to 300 watts. This means that to meet the energy demands of various applications, the wattage should align with both the ...

[WhatsApp](#)



## Contact Us

---

For catalog requests, pricing, or partnerships, please visit:  
<https://www.straighta.co.za>