

How many watts of solar energy can a 460ah lithium battery match





Overview

Note: If you already have a solar panel and want to know how long it will take to charge your battery, use our solar battery charge time calculator.

How many watts a solar panel to charge a lithium battery?

You need around 1600-2000 watts of solar panels to charge most of the 48V lithium batteries from 100% depth of discharge in 6 peak sun hours with an MPPT charge controller. [What Size Solar Panel To Charge 120Ah Battery?](#)

.

How many watts a solar panel to charge a 24v battery?

You need around 600-900 watts of solar panels to charge most of the 24V lithium (LiFePO4) batteries from 100% depth of discharge in 6 peak sun hours with an MPPT charge controller. [Full article: What Size Solar Panel To Charge 24v Battery?](#)

[What Size Solar Panel To Charge 48V Battery?](#)

.

How many solar panels do I need to charge a 50Ah battery?

You need around 180 watts of solar panels to charge a 12V 50ah Lithium (LiFePO4) battery from 100% depth of discharge in 4 peak sun hours with an MPPT charge controller. [Related Post: How Long Will A 50Ah Battery Last?](#)

.

What is a solar panel and Battery sizing calculator?

A Solar Panel and Battery Sizing Calculator is an invaluable tool designed to help you determine the optimal size of solar panels and batteries required to meet your energy needs. By inputting specific details about your energy consumption, this calculator provides tailored insights into the solar setup that will best suit your requirements.



How to choose a battery for a solar panel?

Let's look at how to choose the battery for a solar panel. A good general rule of thumb for most applications is a 1:1 ratio of batteries and watts, or slightly more if you live near the poles.

How much power does a 500 watt solar panel need?

Around 250ah of power, ideally a 200ah battery, or 2x120ah batteries. A 500-watt panel setup (2x 250-watt panels) can easily charge a 200ah battery in a day, so you could have 2x200ah batteries charging if you are not running them flat every day.



How many watts of solar energy can a 460ah lithium battery match



[Solar Battery Size Guide: kWh, Inverter & Runtime](#)

2 days ago · Size your solar battery using load profile, critical loads, efficiency and DoD. Calculator matches kWh, inverter and runtime for code-compliant installs.

[WhatsApp](#)

Solar Sizing Calculations & Worksheet: Calculating Battery Run ...

Our solar generator has a lithium battery that discharges to 80%. So in reality, we don't have a 500Wh capacity. The usable capacity is actually 400Wh (80% of 500Wh).

[WhatsApp](#)



[Battery Ah Needs Calculator-Battery Sizing Tool Online](#)

At Ufine Battery, we provide a range of lithium batteries ideal for solar energy storage. From high-capacity LiFePO₄ packs to custom lithium polymer cells, we tailor batteries in size, voltage, ...

[WhatsApp](#)



[how many watts of solar panels do I need to](#)

Messages 162 Oct 9, 2021 #3 with my 200ah battery i use a 50 watt panel to just maintain it, but my battery is for emergency back up for my furnace so there is little or no draw ...



[WhatsApp](#)



How to calculate Lithium Solar Batteries energy fit your home?

Jack will install a Off Grid System system of 12.6 kWh. or above. 15kwh will be the best choice. To size and calculation about the Lithium Solar batteries. We need to know how ...

[WhatsApp](#)



How Do You Calculate Solar Panel to Battery for Maximum Energy ...

Powerful yet Compact: Boasting a 1,500W AC output and a 3,000W surge peak, the Solar Generator 1000 V2 can power multiple appliances, including AC units, fridges, and ...

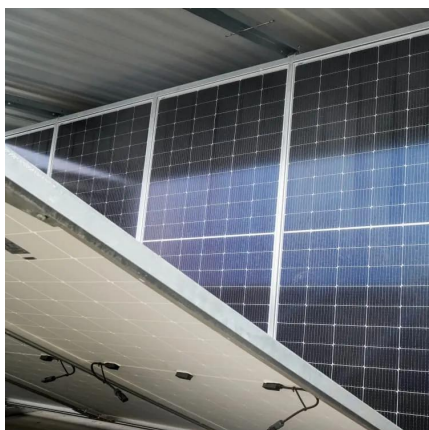
[WhatsApp](#)



Free Solar Battery Calculator: Calculate Fast & Easy The Solar Battery

These solar battery calculators help you design your solar battery or solar battery bank not only fast and easy but also cost-effectively by implementing the best design practices ...

[WhatsApp](#)





[How to Calculate Battery Capacity for Solar System](#)

Choosing the right battery capacity for your solar setup isn't guesswork--it's about knowing your solar energy needs. If you go too small, you'll run out of power fast. Too big, and ...

[WhatsApp](#)



How Do You Calculate Solar Panel to Battery for Maximum ...

Powerful yet Compact: Boasting a 1,500W AC output and a 3,000W surge peak, the Solar Generator 1000 V2 can power multiple appliances, including AC units, fridges, and ...

[WhatsApp](#)

[Ideal Battery Amp Hours \(Ah\) for a 370 Watt Solar System](#)

Hi All - My new Reflection TT has a 370W solar system. That said, will two 100Ah batteries suffice for dry camping? I arrived at two 100Ah batteries using the following formula: ...

[WhatsApp](#)



[How Many Solar Panels to Charge 4 Batteries?](#)

Four 12V 100ah batteries at 50% DOD is 2400 watts. With 4 x 300 watt solar panels the charge time will be 2 to 3 hours. A single 300 watt solar panel can recharge four 100ah batteries at ...

[WhatsApp](#)



[Solar Panel To Battery Ratio \(Kw + Watts\)](#)

Let's look at how to choose the battery for a solar panel. A good general rule of thumb for most applications is a 1:1 ratio of batteries and watts, or slightly more if you live near ...

[WhatsApp](#)



Contact Us

For catalog requests, pricing, or partnerships, please visit:
<https://www.straighta.co.za>