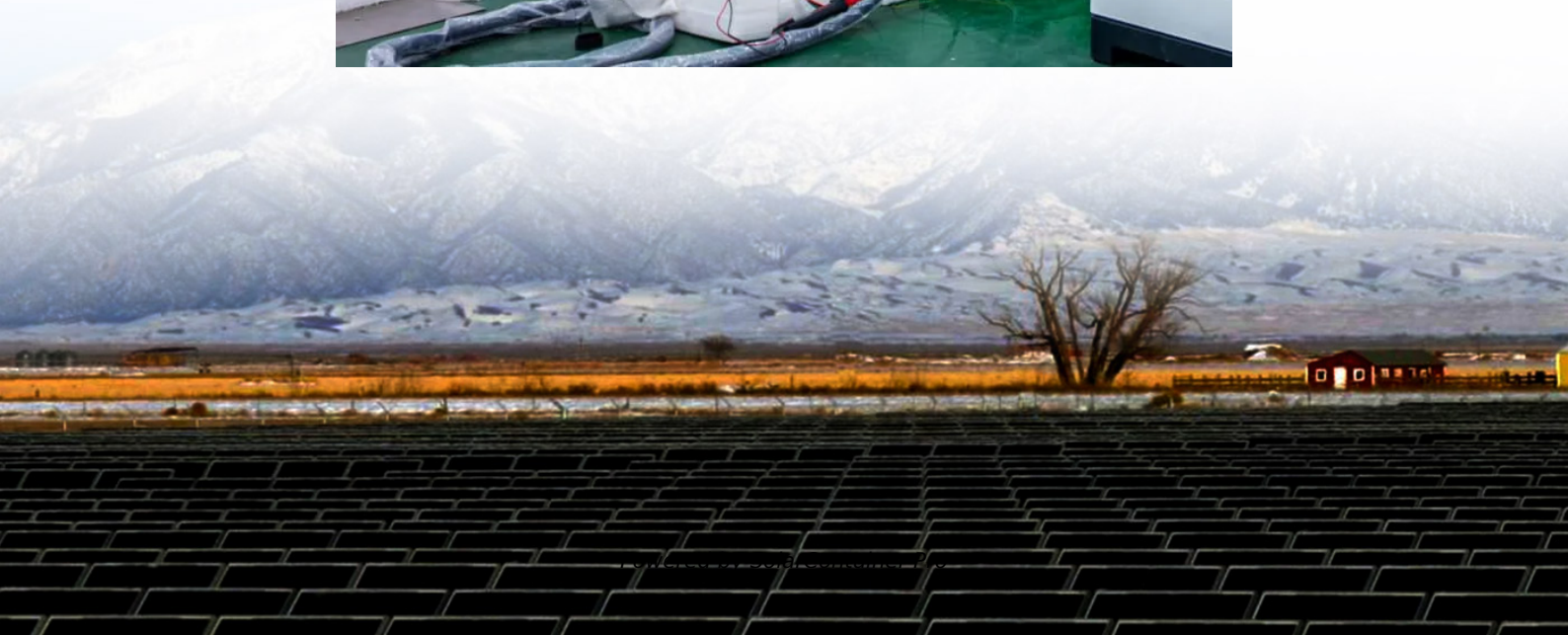


# How many watts of inverter is needed to output 220v





## Overview

---

Before we go any further, we highly recommend that you choose a pure sine wave inverter. This type of inverter delivers high-quality electricity, similar to your utility company. This way, none of your appliances run the risk of being damaged. Now, when it comes to sizing your inverter, you always need to check.

We have summarized the appliances that inverters from 300W to 3000W can run depending on their rated maximum power. Note to our readers: Use the above formula to determine.

Therefore, in this case, an inverter of around 750 watts would be appropriate. It's important to note that a larger inverter will consume more power, even if the devices you're running don't require it, so it's best to choose a size that closely matches your needs. How to Calculate Inverter Size?

How much wattage does an inverter need?

Check the nameplate on the appliance to determine the actual wattage required. \* Appliances and tools with induction motors (marked \* in tables) may require from 3 to 7 times the listed wattage when starting. The start-up load of the appliance or tool determines whether an inverter has the capability to power it.

How do I select an inverter that has enough power?

To select an inverter from DonRowe.com that has enough power for your application, add the watts for items you may want to run at the same time. Use the total wattage, plus 20%, as your minimum power requirement. Note: The wattage's given below are estimates. The actual wattage required for your appliances may differ from those listed.

What size inverter do I Need?

It is typically measured in watts or kilowatts. The size of the inverter you need depends on the total power consumption of the devices you want to run. For instance, if you want to power a 100-watt light bulb and a 500-watt refrigerator, you would need an inverter that is rated for at least 600 watts.



How do you calculate the power consumption of an inverter?

First, determine the total power consumption (Watt) of all the devices that will be connected to the inverter. Next, determine the power factor of the devices. This is usually provided in the device's specifications. Next, calculate the total apparent power (VA) by multiplying the total power consumption by the power factor.

What is the inverter size calculator?

The Inverter Size Calculator is a valuable tool for determining the appropriate inverter size based on your power needs and electrical load. It is widely used in selecting inverters for residential, commercial, and solar applications, ensuring that the inverter's capacity matches the required energy demands efficiently.

What are the different solar inverter sizes?

Solar generators range in size from small generators for short camping trips to large off-grid power systems for a boat or house. Consequently, inverter sizes vary greatly. During our research, we discovered that most inverters range in size from 300 watts up to over 3000 watts. In this article, we guide you through the different inverter sizes.



## How many watts of inverter is needed to output 220v

---



### [Usage Chart: How Many Watts Do You Need?](#)

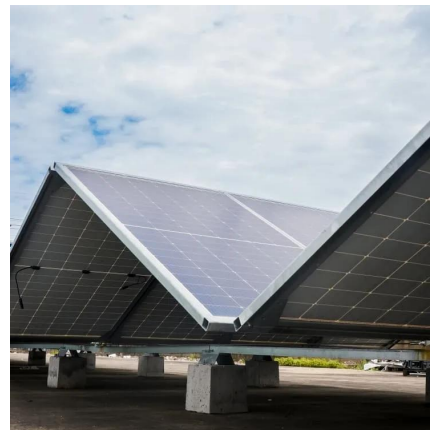
Use the total wattage, plus 20%, as your minimum power requirement. Note: The wattage's given below are estimates. The actual wattage required for your appliances may differ from those ...

[WhatsApp](#)

### **Inverter Current Calculator**

How to Use the Inverter Current Calculator To use the inverter current calculator, follow these steps: Input the power rating (in watts or kilowatts) of your inverter. Enter the input voltage of ...

[WhatsApp](#)



### **How Many Solar Panels Do I Need For a 6000 Watt Inverter**

Step 4: Account for Inverter Efficiency Inverters are not 100% efficient, so consider the inverter efficiency when sizing your solar array. A 6000W inverter might have an efficiency ...

[WhatsApp](#)



### **Selecting the Proper Inverter / Frequency Converter for your**

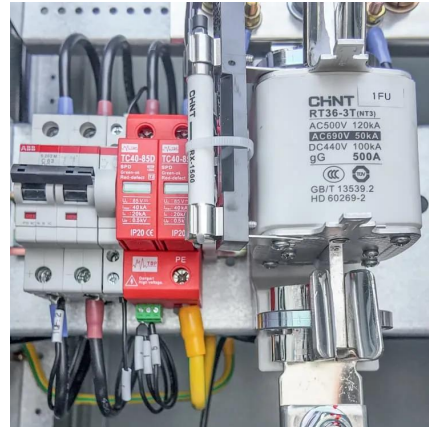
Therefore, for high-frequency topology inverters (GL and CGL Series), Nova Electric suggests maintaining a ratio of 3:1 between the power





output rating of the inverter in VA, and the rating ...

[WhatsApp](#)



### [Frequently Asked Questions about Inverters](#)

Frequently Asked Questions about Inverters How much battery capacity do I need with an inverter? As a rule of thumb, the minimum required battery capacity for a 12-volt system is ...

[WhatsApp](#)



### **Find the Right Inverter Size: How Big An Inverter Do You need?**

How Much Power Is Enough for an Inverter? The right size inverter for your specific application depends on how much wattage your devices require. This information is ...

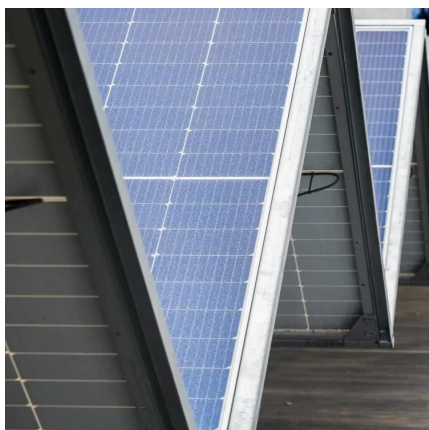
[WhatsApp](#)



### [How Many Watt Solar Panel To Charge 220ah Battery](#)

How Many Watt Solar Panel To Charge 220ah Battery When it comes to solar inverters in India, there are many options to consider when purchasing one for your solar energy solution. In the ...

[WhatsApp](#)





### **Inverter Size Calculator [Power Inverter, AC, DC, Solar Inverter]**

The Inverter Size Calculator helps determine the appropriate inverter size for your power needs, whether for home appliances, solar systems, or vehicles. It simplifies calculating ...

[WhatsApp](#)



## **Contact Us**

---

For catalog requests, pricing, or partnerships, please visit:  
<https://www.straighta.co.za>