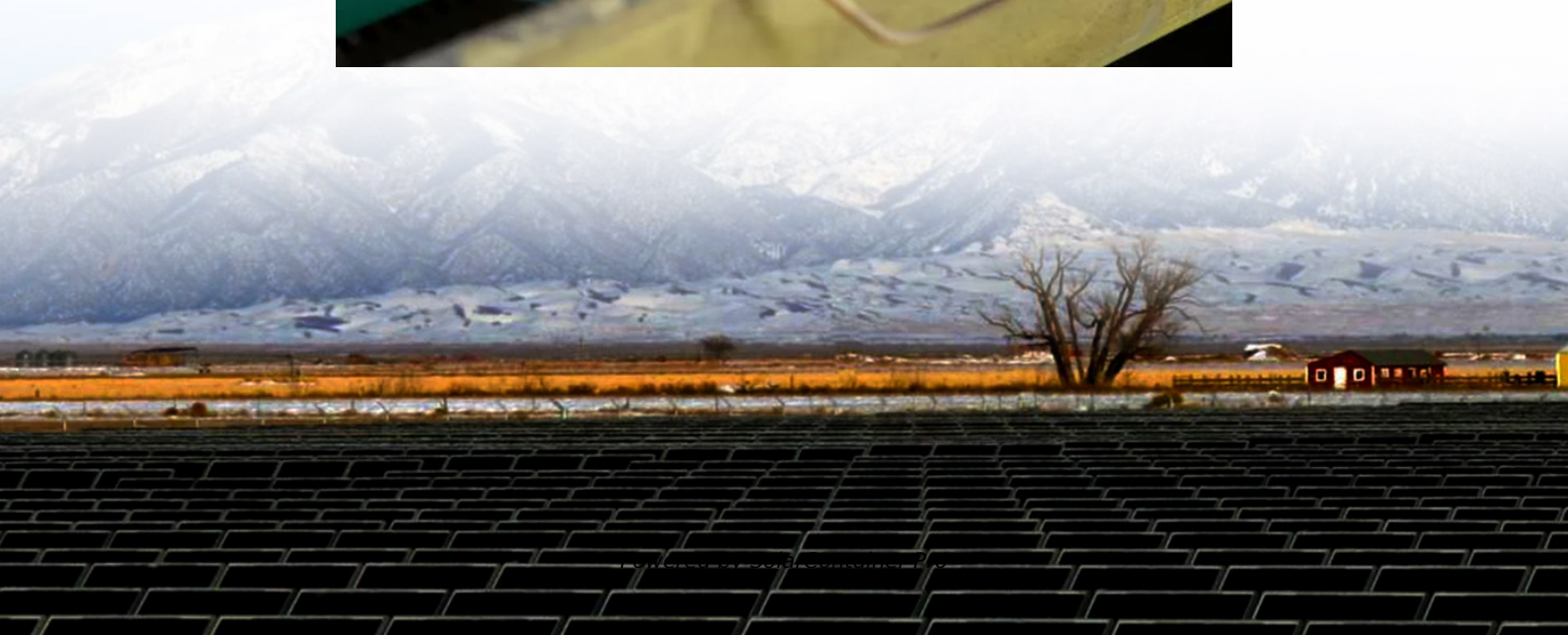


How many watts of battery can a 160w solar panel support





Overview

□ So, a 150Ah lithium battery or 250Ah AGM battery would be suitable. To recharge your battery daily, divide your energy needs by average sun hours (e.g. 5 peak sun hours/day in most of Australia): Solar Panel Wattage = Daily Wh ÷ Sun Hours $1490 \text{ Wh} \div 5 \text{ hrs} = 298\text{W}$ How much power can a 160 watt solar panel generate?

The most power your 160 watt solar panel array generate in a day with a battery system is $160 \text{ watts} \times 4 \text{ hours} \times 66\% \text{ efficiency factor} = 422 \text{ watt hours}$ at best. Ok to size the battery properly you select a size based on 20% discharge per day. So with 422 wh we can multiply by 5, so $422 \text{ wh} \times 5 = 2110 \text{ wh}$ capacity.

How many watts a solar panel to charge a 12V battery?

You need around 400-550 watts of solar panels to charge most of the 12V lithium (LiFePO4) batteries from 100% depth of discharge in 6 peak sun hours with an MPPT charge controller. What Size Solar Panel To Charge 24v Battery?

.

How many watts a solar panel to charge a lithium battery?

You need around 1600-2000 watts of solar panels to charge most of the 48V lithium batteries from 100% depth of discharge in 6 peak sun hours with an MPPT charge controller. What Size Solar Panel To Charge 120Ah Battery?

.

How many watts a solar panel to charge 130ah battery?

You need around 380 watts of solar panels to charge a 12V 130ah Lithium (LiFePO4) battery from 100% depth in 5 peak sun hours with an MPPT charge controller. What Size Solar Panel To Charge 140Ah Battery?

.



What battery for a 160W solar panel?

Poot, if you already have the 160w panel and need to buy a battery and solar controller, I think a 80-100ah AGM battery would be a good choice. I would not go much above 100ah rating, unless you have alternate charging sources, such as a generator or shore power hookup, or a tie-in with the vehicle alternator.

How many watts of solar panels do I Need?

You need around 800-1000 watts of solar panels to charge most of the 48V lead-acid batteries from 50% depth of discharge in 6 peak sun hours with an MPPT charge controller. You need around 1600-2000 watts of solar panels to charge most of the 48V lithium batteries from 100% depth of discharge in 6 peak sun hours with an MPPT charge controller.



How many watts of battery can a 160w solar panel support



Battery watts vs solar panels watts???? , Ram Promaster Forum

How much or many will a lithium 100 watt battery will hold from a 100 or 160 watt solar flex panel? Or do I need 2 100 battery's for a 160 panel? What does this equal into amps??

[WhatsApp](#)

Sizing Your Solar System: Panel & Battery Calculators Simplified

Whether you're powering a fridge in your 4WD, lights at a campsite, or going fully off-grid, this guide will walk you through how to calculate the right size solar panel and battery system for ...

[WhatsApp](#)



[How Many Solar Panels to Run a Freezer?](#)

Solar panel power output should be rounded off to the nearest size available. If a 9 cu. ft. freezer requires 144 watts of solar power, get a 150W PV module. We recommend the Newpowa ...

[WhatsApp](#)

How Much Battery for Solar Panel: A Complete Guide to Sizing ...

Determine the right battery capacity for your solar panel system with our comprehensive guide. Learn how to calculate your needs based



on daily energy usage, ...

[WhatsApp](#)



EcoFlow 160W Solar Panel FAQs: Everything You Need to Know

With the EcoFlow RIVER 2 Max, the maximum solar capacity is 220W, meaning you can connect one of the following three options. Does the EcoFlow 160W Solar Panel Store Electricity? No, ...

[WhatsApp](#)



[How much power can a 160w 2-piece solar battery charge](#)

A 160W two-piece solar battery can charge a variety of devices, with its efficacy depending on factors such as sunlight exposure, battery capacity, and the type of devices ...

[WhatsApp](#)



How big of a battery do I need for a 160 Watt solar panel?

My question is; how big of a battery do I need for a 160 Watt solar panel? A 1-to-1 Watts-to-Amp Hour ratio is about the maximum, with more wattage being preferred. As an ...

[WhatsApp](#)





[12V 160w solar panel \(new\) outputting Volts but no Amps?](#)

Hi all, This Ecoflow 160w solar panel came in a lot with a submersible solar pump. Turns out the solar panel is not working, it's brand new. Measures normal volts in the sun ...

[WhatsApp](#)



Choosing Solar Panels For A Solar Generator (Buyers Guide)

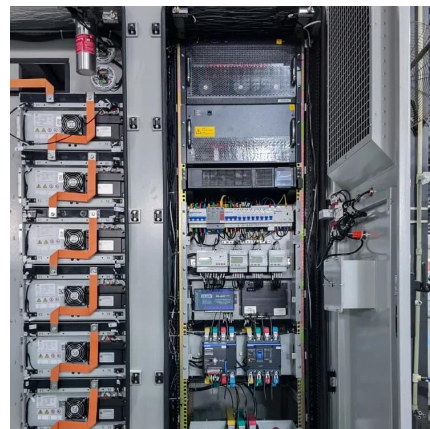
However, to unlock the full potential of your solar generator, you need to pair it with a good portable solar panel. Choosing the best solar panels for your solar generator can be ...

[WhatsApp](#)

[How Many Amps Should My Solar Panel Put Out?](#)

Solar panel output is usually measured in watts, but what if you are charging a battery, or your power load consumption is in amp hours? In these instances it is important to understand how ...

[WhatsApp](#)



Contact Us

For catalog requests, pricing, or partnerships, please visit:
<https://www.straighta.co.za>