

# **How many watts is suitable for micro inverters**





## Overview

---

Do solar panels have microinverters?

Most solar panel systems with microinverters include one microinverter on every panel, but it's not uncommon for one microinverter to connect to a handful of panels. Microinverters are classified as module-level power electronics (MLPE). Each microinverter operates at the panel site independently of the other inverters in the system.

Do microinverters need power optimizers?

Microinverters operate at the panel level and don't require power optimizers for rapid shutdown compliance and optimization. If something is wrong with one microinverter, only the panel attached to it will shut down instead of the entire system. Diagnosing and fixing issues with microinverters is often quicker than with central string inverters.

What are microinverters & how do they compare to other inverters?

Let's dive deeper into microinverters, their technology, and how they compare to other inverters. Microinverters are a type of solar inverter technology installed at each panel. Microinverters offer many benefits, such as rapid shutdown capabilities, flexibility for panel layouts, and panel-level monitoring and diagnostics.

What factors should you consider when choosing a microinverter?

When comparing your microinverter options, there are a few main factors to keep in mind: Just like solar panels, microinverters have varying efficiencies. An inverter's efficiency measures energy losses during the conversion from DC to AC electricity. The more efficient the microinverter, the more solar electricity production.

How efficient is a microinverter?

An inverter's efficiency measures energy losses during the conversion from DC



to AC electricity. The more efficient the microinverter, the more solar electricity production. Efficiency ratings are often measured under ideal conditions, but things like climate and weather contribute to a microinverter's actual efficiency.

Are microinverters worth it?

Higher efficiency microinverters with longer warranties often come with higher price tags but can be worth it depending on your solar panel system setup and preferences. When a rapid shutdown occurs, microinverters can shut down automatically in compliance.



## How many watts is suitable for micro inverters

---



### How to Properly Size Enphase Microinverters for Your Solar Panels

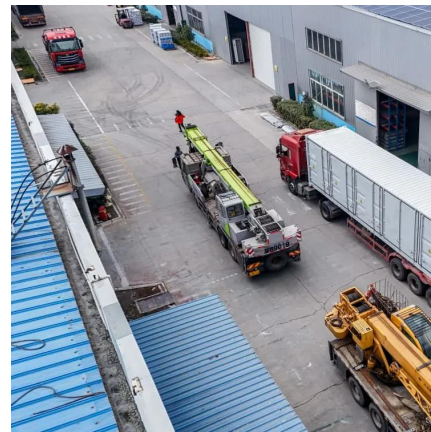
If you're considering solar--or you're in the middle of designing a system with Enphase--understanding how microinverter sizing works is critical. Unlike traditional systems ...

[WhatsApp](#)

### [Appropriately sized Microinverters for Panel Size?](#)

I would have used IQ7+ micros which have 295-Watt AC output. Your IQ7 micros at 240W AC output is a bit low, and 350-Watt panels mean your power ratio is about 1.45 to 1, that is ...

[WhatsApp](#)



### How many inverters are needed for a photovoltaic project

Like solar panels, inverters are rated in watts. Because your solar inverter converts DC electricity coming from the panels, your solar inverter needs to have the capacity to handle all the power ...

[WhatsApp](#)

### [How Many Solar Panels Can a Micro Inverter Handle?](#)

Power Rating: Each micro inverter has a maximum power rating, usually measured in kilowatts (kW). This rating indicates the total DC



power input it can handle. For example, a ...

[WhatsApp](#)



### **What load should you have on a Microinverter? 50%, 75%, 100%, ...**

Most micro-inverters are designed to be one to one. There are some that can connect multiple, but you then get into NEC concerns with DC wires and rapid shutdown ...

[WhatsApp](#)



### How to Size Your Microinverter for Solar Panels

If a single microinverter can support up to 350 watts, then each panel could have its own microinverter. But if you have higher-wattage panels or microinverters that can support ...

[WhatsApp](#)



### The Only Inverter Size Chart You'll Ever Need

Each microinverter model has a maximum power capacity (in watts) it can handle from a solar panel. If your panel's output exceeds what the microinverter can handle, the excess energy is ...

[WhatsApp](#)



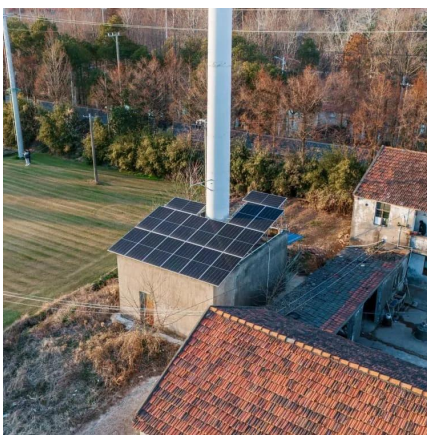




## How to Properly Size Enphase Microinverters for Your Solar Panels

Each microinverter model has a maximum power capacity (in watts) it can handle from a solar panel. If your panel's output exceeds what the microinverter can handle, the excess energy is ...

[WhatsApp](#)



## [Which Inverter Do I Need to Run a Microwave? . Go Power!](#)

When choosing an inverter, you need one that can accommodate the start-up draw. A 2,000-watt (running watts) inverter may have a peak (or surge) output of 3000 watts. This inverter could ...

[WhatsApp](#)

## What Size Inverter for 200W Solar Panel? Do you Really Need it?

What size inverter for 200 watt solar panel? For a 200W solar panel system, you need anywhere between 300-1000 watt inverter to run AC appliances. However, the exact size ...

[WhatsApp](#)



## Contact Us

For catalog requests, pricing, or partnerships, please visit:  
<https://www.straightta.co.za>