

How many watts is a portable power bank





Overview

The number of watts stands for a total energy that powerbank can output at a given time. For example 18W powerbank can provide 18W for 1 hour, or 1W for 18 hours. Some larger devices, like laptops may require a higher power supply, meaning you should use a powerbank with more watts. How many watts is a power bank?

18W to 30W power banks could be great for targeting professionals who may need to charge both phones and tablets on the go. 30W to 100W power banks make for premium promotional items or corporate gifts, especially for clients who need to charge laptops or larger electronics. Conclusion: How Many Watts Is Best for a Power Bank?

.

What does wattage mean in a power bank?

In the context of power banks, wattage reflects how quickly the power bank can charge your devices. Higher wattage generally means faster charging and the ability to power larger devices. It is especially important when considering more power-hungry gadgets like tablets, laptops, or even newer smartphones that support fast charging.

Which power bank wattage should I Choose?

Choose 30W if you need a versatile power bank for your phone, tablet, and gaming devices. Choose 65W if you need fast laptop charging and future-proof power. No matter what you choose, understanding power bank wattage ensures you get the fastest, most efficient charging for your needs. Your Turn!.

Can I use a power bank with a lower wattage?

Yes, you can use a power bank with a lower wattage for your device, but it may not charge as efficiently. A power bank with a lower wattage output will charge your device slower, which may not be ideal for devices that require



fast charging.

What is a portable power bank?

A portable power bank's purpose is to transfer electrical power from itself to another device. Here are some typical energy requirements: Smartphones: Generally, require between 13 to 18 Wh for a full charge. Laptops: Require much more, often between 30 to 100 Wh, depending on the model and usage.

How do I choose a portable power bank?

When choosing a power bank, the first thing to consider is whether it can charge your key devices. A portable power bank's purpose is to transfer electrical power from itself to another device. Here are some typical energy requirements: Smartphones: Generally, require between 13 to 18 Wh for a full charge.



How many watts is a portable power bank



[Charger Specifications: Understand Power Bank ...](#)

4 days ago· Your power bank not only charges other devices--it also needs to recharge itself. Look for input specs like "5V/2A" or "USB-C PD 18W" to know ...

[WhatsApp](#)

Power Bank Terminologies Explained: What are mAh, volts, and watts?

Using the formula, if you have a 10,000 mAh power bank with a 4.8 A output at 5V, your power bank has a power of 24W. This means that it can deliver 24W of power to a phone, ...

[WhatsApp](#)



Power Bank Terminologies Explained: What are mAh, volts, and ...

Using the formula, if you have a 10,000 mAh power bank with a 4.8 A output at 5V, your power bank has a power of 24W. This means that it can deliver 24W of power to a phone, ...

[WhatsApp](#)



Portable Power Stations: Can They Run Your TV, AC, and Fridge?

Many pieces of equipment, including key home appliances, can be used during outages if you have access to a portable power station. With



power connectivity, numerous ...

[WhatsApp](#)



How many watt hours do I need for a portable power station

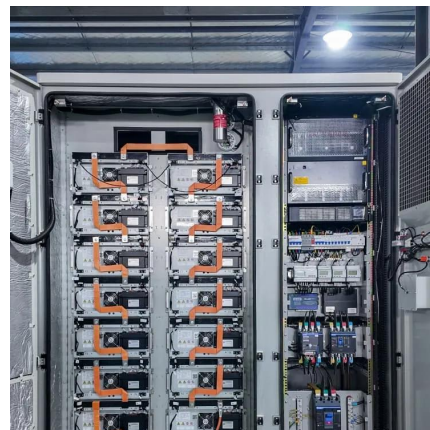
Asiair plus: 12V, 5A, 60 watts. This will plug into a 12V DC output on the power bank. ZWO AM5 mount: 12V, 3A, 36 watts. This will plug into the 12V DC output on the Asiair. Guide camera: I ...

[WhatsApp](#)

Can I Take a Portable Battery Charger on a Plane? TSA Rules for Power

What Are the TSA Rules for Portable Battery Chargers on Planes? You can take portable battery chargers, also known as power banks, on a plane, but there are specific TSA ...

[WhatsApp](#)



Charger Specifications: Understand Power Bank Specs Like a Pro

4 days ago· Your power bank not only charges other devices--it also needs to recharge itself. Look for input specs like "5V/2A" or "USB-C PD 18W" to know how fast it can recharge.

[WhatsApp](#)



How to Convert mAh to Watt-Hour and Why It Matters - XYZtech

Airline Regulations: Many airlines set a maximum allowable capacity for power banks at 100Wh, making it essential to know how to convert mAh to watt-hour to stay ...

[WhatsApp](#)



INIU , What Does W Mean in Power Banks , Wattage Explained

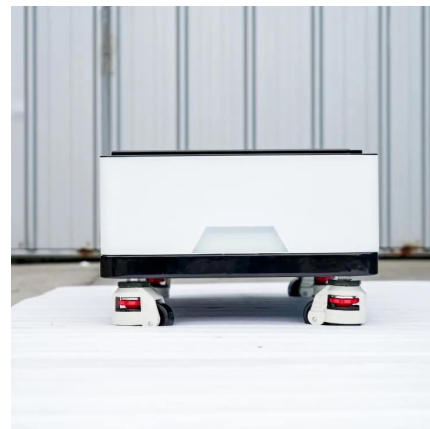
Wattage (W) is a unit of power that indicates how much energy a power bank can deliver per hour. It is derived from the formula: $W = V \times A$, where:
- A represents current ...

[WhatsApp](#)

Best Charging Speeds: 18W vs. 30W vs. 65W Power Banks - ...

Whether you're a casual phone user or a digital nomad who needs to power a laptop on the go, choosing the right charging speed makes all the difference. In this guide, ...

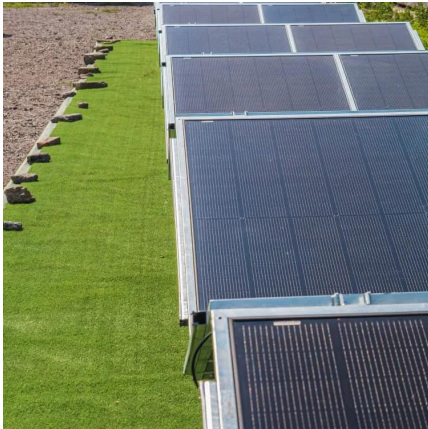
[WhatsApp](#)



How to Select the Right Size Portable Power Station For Your ...

Check the wattage rating of your devices to estimate how much power you'll need. The wattage of each device is usually found on a label on the back or bottom of the device. If you can't find ...

[WhatsApp](#)



Contact Us

For catalog requests, pricing, or partnerships, please visit:
<https://www.straighta.co.za>