

How many watts is a 24 volt 30A solar panel





Overview

Solar panels on average produce between 50 to 400 watts per panel, 4. The overall efficiency of the solar system including the inverter and battery also impacts the wattage. The current (I) produced by the solar panel needs to be known to calculate wattage accurately. How many watts a solar panel to charge a 24v battery?

You need around 600-900 watts of solar panels to charge most of the 24V lithium (LiFePO4) batteries from 100% depth of discharge in 6 peak sun hours with an MPPT charge controller. Full article: [What Size Solar Panel To Charge 24v Battery?](#)

What Size Solar Panel To Charge 48V Battery?

.

How many kW is a 20 watt solar panel?

Usually, it is 1.2 to 1.5 which is multiplied by the desired output. For example with a 20% buffer, the required solar panel output with Buffer (Watts) = $6 \text{ kW} \times 1.20 = 7.2 \text{ kW}$ Nevertheless, when you are choosing solar panels make sure their power ratings equal or surpass the required output to meet your energy needs and preferences.

What is solar panel calculator?

Solar Panel Calculator is an online tool used in electrical engineering to estimate the total power output, solar system output voltage and current when the number of solar panel units connected in series or parallel, panel efficiency, total area and total width.

How to calculate solar panel wattage?

Also Check: - [Hand Drying Footprint Calculator](#) Calculating solar panel wattage involves a series of methodical steps: Determine the panel specifications: Locate the V_{mp} and I_{mp} values, which are typically provided on the panel's



datasheet. Apply the formula: Multiply V_{mp} by I_{mp} to derive the maximum power output in watts.

How many watts can a solar panel produce?

For example: A 100-watt panel can produce 100 watts per hour in direct sunlight. A 400-watt panel can generate 400 watts per hour under the same conditions. This doesn't mean they'll produce that amount all day, output varies with weather, shade, and panel orientation.

How much power does a 400W solar panel produce?

Optimal conditions: On a clear, sunny day, with the panel perfectly oriented towards the sun, a 400W panel might generate output close to its rated capacity. Typical conditions: Under average conditions, accounting for various influencing factors, you might expect an output between 320 to 360 watts during peak sunlight hours.



How many watts is a 24 volt 30A solar panel



Solar Panel Ratings Explained - Wattage, Current, Voltage, and

ECO-WORTHY 200 Watts 12 Volt/24 Volt Solar Panel Kit with High Efficiency Monocrystalline Solar Panel and 30A PWM Charge Controller for RV, Camper, Vehicle, ...

[WhatsApp](#)

What Size Solar Panel To Charge 24v Battery? (incl. Calculator)

Use our free online solar panel size calculator to find out what size solar panel to charge a 24v battery in desired peak sun hours. Note: Click here to read our in-depth post on ...

[WhatsApp](#)



Solar Panel Wattage Calculator

This calculator considers variables such as panel efficiency, sunlight intensity, and environmental conditions, allowing for a more accurate prediction of the electricity a solar panel can generate.

[WhatsApp](#)

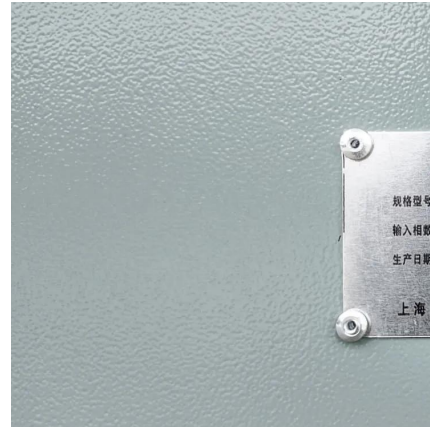
[What Size Charge Controller For a 300 Watt Solar Panel?](#)

The formula is: Solar panel watts / volts = amps
+ 20% = charge controller size So with a 12V
300 watt solar panel, the formula looks like this:



$300 \text{ watts} / 12\text{V} = 25 \text{ amps} + 20\% = 30$ You need ...

[WhatsApp](#)



200 Watt Solar Panel How Many Amps? Is 200W solar enough?

Energy in watt-hours is useful for matching battery output to various loads. 200 watt solar panel how many amps? The maximum amps for a 200 watt solar panel is termed I_{mp} (Current ...

[WhatsApp](#)



What Size Solar Panel To Charge 24v Battery? (incl. Calculator)

At $30\text{A} \times 14.4\text{V} = 432\text{W}$. If the 2/3 thing is a rule, I've never read that in a SCC's manual, and Victron's propensity for recommending over-paneling means you're going to push ...

[WhatsApp](#)



MorningStar ProStar 30 Amp 12/24 Volt PWM Charge Controller

It can be used for any 12 or 24 volt battery system. It will handle up to 30 amps from the solar panels - about 500 watts of panel at 12 volts, 1000 watts at 24 volts. Morningstar's series ...

[WhatsApp](#)

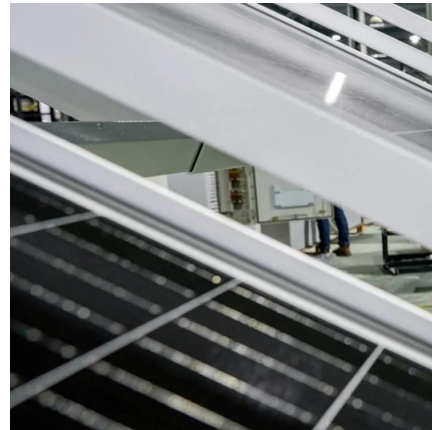




[Do I need a 30A or 40A SCC? Calculators disagree.](#)

At $30A \times 14.4V = 432W$. If the 2/3 thing is a rule, I've never read that in a SCC's manual, and Victron's propensity for recommending over-paneling means you're going to push ...

[WhatsApp](#)



Contact Us

For catalog requests, pricing, or partnerships, please visit:
<https://www.straighta.co.za>