

How many watts does the inverter of a small communication base station have





Overview

Before we go any further, we highly recommend that you choose a pure sine wave inverter. This type of inverter delivers high-quality electricity, similar to your utility company. This way, none of your appliance.

How much power does an inverter need?

The continuous power requirement is actually 2250 but when sizing an inverter, you have to plan for the start up so the inverter can handle it. Third, you need to decide how long you want to run 2250 watts. Let's say you would like to power these items for an eight-hour period.

How to choose a power inverter?

Second, select an inverter. For this example, you will need a power inverter capable of handling 4500 watts. The continuous power requirement is actually 2250 but when sizing an inverter, you have to plan for the start up so the inverter can handle it. Third, you need to decide how long you want to run 2250 watts.

How do you classify an inverter based on its power output?

Using the CEC efficiency, the input power to the inverter must be $P_{IN} = P_{OUT} / \text{CEC Efficiency} = 3,300 \text{ W} / 0.945 = 3,492 \text{ W}$ Inverters can be classed according to their power output. The following information is not set in stone, but it gives you an idea of the classifications and general power ranges associated with them.

What are inverter specifications?

Specifications provide the values of operating parameters for a given inverter. Common specifications are discussed below. Some or all of the specifications usually appear on the inverter data sheet. Maximum AC output power This is the maximum power the inverter can supply to a load on a steady basis at a specified output voltage.

How to calculate inverter size?



Using the Inverter Size Calculator is quick and easy. You'll need three inputs:
Total Wattage (W): This is the total power consumption of all the appliances or devices you plan to run through the inverter. Safety Factor: A multiplier to ensure some buffer above your actual power requirement. Typically ranges from 1.1 to 1.5.

How many watts can a fixed station transmit?

95.1767 (a) (1) Transmitter power of mobile, repeater, and base stations must not exceed 50 watts. This is for the "main" (a/k/a repeater input/output) channels. It seems that the term "fixed station" is no longer defined by the new rules, so that 15 watt limit seems meaningless.



How many watts does the inverter of a small communication base s



[Portable Generator Sizing & Wattage Calculator](#)

Each portable generator has two main specs, running watts and starting watts. You can learn more about them in an article dedicated to this topic. The wattage calculator below eliminates ...

[WhatsApp](#)

How can a cellphone reach a cell tower with so little power?

Cell towers use powerful transmitters, 1000+ Watts per sector, but your cellphone uses transmitters that are way less powerful, 1-2 Watts. So how can your cellphone reach the cell ...

[WhatsApp](#)



[How Big of An Inverter Do I Need to Run a Crock Pot?](#)

How many you need depends on the battery size and how fast you want it charged. Suppose you fully discharged a 12V 200ah battery after cooking for 8 hours. 200 amps is 2400 watts, so $2 \times \dots$

[WhatsApp](#)

Understanding Battery Capacity and Inverter Compatibility

How Long Can a 100 Ah Battery Run a 1000W Inverter? To estimate how long a battery can run an inverter, we need to consider the power draw



and the battery's capacity. ...

[WhatsApp](#)



[The Only Inverter Size Chart You'll Ever Need](#)

A 300W inverter will simultaneously run all of your small electronic devices, such as phones, tablets, drones, and laptops. It can also power an electric fan while you're working ...

[WhatsApp](#)



How Many Watts Does an Inverter Refrigerator Use: A Closer ...

An inverter refrigerator is a popular appliance that helps us keep our food fresh and cool. However, one question that often arises is, "How many watts does an inverter ...

[WhatsApp](#)

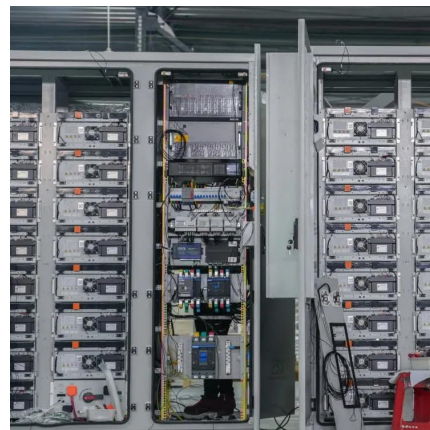
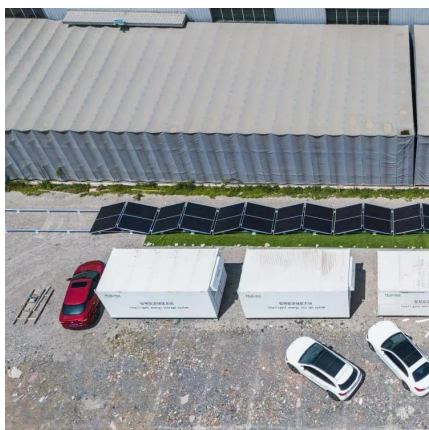


Table 1 Power consumption of the base station components for ...

The factors that affect the energy usage of a femtocell base station are discussed and then the power consumption of user equipment under femtocell coverage is mentioned.

[WhatsApp](#)





[What Inverter Size Do You Need to Run a Freezer?](#)

For the recommended inverter size, we have rounded off the results. For instance 350 watts plus 25% is 437 watts, but you won't find an inverter with that capacity, so your best option is a ...

[WhatsApp](#)



[Choosing the right size power supply for your radio](#)

It has no internal power transformer or inverter of its own, so it isn't made to plug into the AC wall outlet of a home or office building. In that case, how do you power a mobile ...

[WhatsApp](#)

[What Inverter Size Do I Need to Run a Hair Dryer?](#)

A 1500 watt hair dryer is not going to use 1500 watts of inverter power, not unless you use it for an hour. If you blow dry your hair for 15 minutes a day (the average for most people), inverter ...

[WhatsApp](#)



[What's enough power for a base station? : r/gmrs](#)

What's enough power for a base station? I'm looking at putting a small base station into the kitchen of our ranch home for communicating with the HTs outside. Distance is usually within a ...

[WhatsApp](#)



[Usage Chart: How Many Watts Do You Need?](#)

Use the total wattage, plus 20%, as your minimum power requirement. Note: The wattage's given below are estimates. The actual wattage required for your appliances may differ from those ...

[WhatsApp](#)



Contact Us

For catalog requests, pricing, or partnerships, please visit:
<https://www.straighta.co.za>