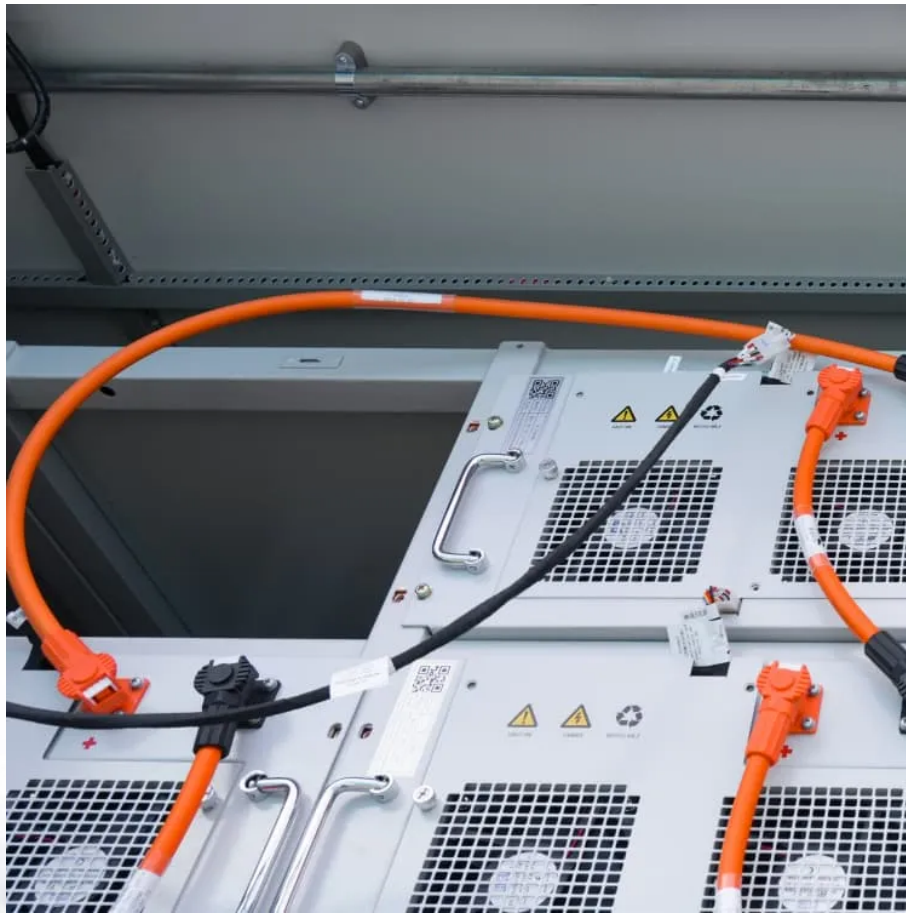


How many watts does solar charging produce per square meter





Overview

As per the recent measurements done by NASA, the average intensity of solar energy that reaches the top atmosphere is about 1,360 watts per square meter. You can calculate the solar power per square meter with the following calculators.

Wattage is the output of solar panels that is calculated by multiplying the volts by amps. Here, the amount of the force of the electricity is represented by volts. The aggregate amount of energy used is expressed in amps (amperes). Output ratings on most solar.

To consider the kilowatt required by the solar system, you need to use the average monthly consumption. Suppose you use 1400 kilowatt-hours per month, and the average sunlight is 6 hours. Now using the calculation, $1400 / 6 * 30 = 7.7$ kilowatt This is the energy for.

Here, a kilowatt-hour is the total amount of energy used by a household during a year. The calculator used to determine the solar panels kWh needs.

In general, the output from solar panels can yield approximately 100 to 200 watts per square meter during peak sunlight hours. However, this is subject to conditions such as the angle of installation, potential shading from nearby objects, and the technology employed in the solar cells. How many Watts Does a solar panel produce per square meter?

On average, a solar panel produces around 150 to 200 watts per square meter. This can vary due to: Example: A 1.7 m² panel with 20% efficiency will produce about 340W in full sun. Note: Monocrystalline panels lead in efficiency, making them ideal for rooftops with limited space.

How do you calculate solar panel output in watts per square meter?

The formula to calculate the solar panel output and how much energy solar panels produce (in watts) using watts per square meter is as follows: Solar Panel Output (W) = Watts per Square Meter (W/m²) × Area of Solar Panel (m²).

How much power does a solar panel generate a month?



So to get the monthly power output, you simply calculate the daily figure then multiply it by 30: The most common domestic solar panel system is 4 kW. And it has 16 panels, each of which is about 1.6 square meters (m²) in size. They are rated to generate approximately 265 watts (W) of power (in ideal conditions).

What is watts per square meter?

Watts per square meter is a measurement that quantifies the power output of solar panels relative to their surface area. It indicates how much electricity a solar panel produces per space unit, allowing for comparisons between different panel types and sizes.

What does wattage mean on a solar panel?

Generally, they are referring to the wattage, power output, and capacity of a solar panel. Standardized residential solar panels on the market are quoted to generate averagely between 250 and 400 watts an hour. Typical domestic solar panel systems are rated to produce power ranging from 1 KW to 4 KW.

How much solar energy is received per square meter?

The amount of solar intensity received by the solar panels is measured in terms of square per meter. The sunlight received per square meter is termed solar irradiance. As per the recent measurements done by NASA, the average intensity of solar energy that reaches the top atmosphere is about 1,360 watts per square meter.



How many watts does solar charging produce per square meter



[Watts Per Square Meter Solar Panel - The Go-to Guide](#)

In this comprehensive guide, we'll delve into the intricacies of watts per square meter for solar panels, exploring what they are, how they work, and why they matter in solar ...

[WhatsApp](#)

[SOLAR POWER PER SQUARE METER CALCULATOR](#)

How many Watts Does a solar panel produce per square meter? The average solar panel has an input rate of roughly 1000 Watts per square meter, while the majority of solar panels on the ...

[WhatsApp](#)



[Solar Panel Watts Per Square Meter Explained](#)

To measure this efficiency, use solar panel Watts per square meter (W/m). This metric shows how much power a solar panel produces per square meter of surface area under standard conditions.

[WhatsApp](#)

Solar Panel Output per Square Meter: Efficiency Factors & Future ...

Solar panels have become a cornerstone of renewable energy, but many wonder: How much power can a single square meter of solar panels



actually produce? Let's break down the ...

[WhatsApp](#)



Solar Panel Wattage Explained: How Many Watts Do You Need?

On average, a solar panel produces around 150 to 200 watts per square meter. This can vary due to: Example: A 1.7 m² panel with 20% efficiency will produce about 340W in full ...

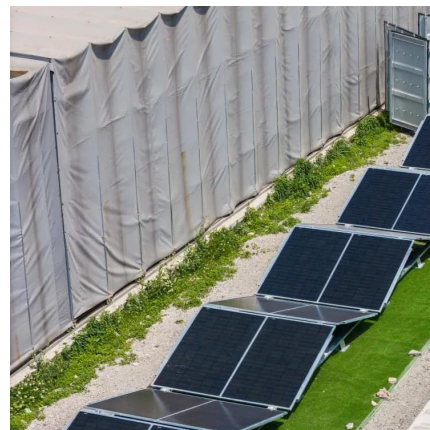
[WhatsApp](#)



Solar Energy Per Square Meter: How Much Power Can You Get?

This article explores solar energy per square meter and the various factors that influence energy output, such as location, climate, and panel efficiency. It provides crucial ...

[WhatsApp](#)



[How many watts does a square meter of solar panel have?](#)

In general, the output from solar panels can yield approximately 100 to 200 watts per square meter during peak sunlight hours. However, this is subject to conditions such as ...

[WhatsApp](#)



SOLAR PANEL WATTS PER SQUARE METER EXPLAINED

How many Watts Does a solar panel produce per square meter? The average solar panel has an input rate of roughly 1000 Watts per square meter, while the majority of solar panels on the ...

[WhatsApp](#)



How Much Power (Watts) does a Solar Panel Produce?

They are rated to generate approximately 265 watts (W) of power (in ideal conditions). To calculate the output per square meter, you can use the following formula: Also, you have about ...

[WhatsApp](#)

How to Understand Solar Panel Watts Per Square Meter

Watts per square meter is a metric used to measure the power output of solar panels relative to their surface area. It represents a solar panel's electricity per square meter ...

[WhatsApp](#)



How many watts does a square meter of solar panel have?

Both roof orientation and shading must also be factors in evaluating whether sufficient productive area exists for solar panel installation.
**The exploration of how many ...

[WhatsApp](#)



Solar Panel Watts Per Square Foot: 'We (Finally) Did The Math'

Check the standard solar panel size (area) and the output wattage of the whole panel. Divide the solar panel wattage (for 100W, 150W, 170W, 200W, 220W, 300W, 350W, 400W, 500W) by the ...

[WhatsApp](#)



Contact Us

For catalog requests, pricing, or partnerships, please visit:
<https://www.straighta.co.za>