

How many watts does a three square meter solar panel hold





Overview

Usually, the typical amount can be 1,000 watts of sunlight per square meter of the panel. As we have mentioned before, average domestic solar panels hold a capacity ranging from 1,000 watts to 4,000 watts. Location is another factor that can have a big influence on power production. How much power does a solar panel generate per square meter?

The next factor is the power of the panel measured in watt peak. If your solar panel generates around 20,000W per year, the average watt peak will be around 275W. Generally, the more expensive a solar panel is, the higher its peak watts. The type of solar panel you choose also influences the solar panel's wattage per square meter.

How many watts can a solar panel hold?

If there are enough direct sunshine and peak hours, the capacity is large. Usually, the typical amount can be 1,000 watts of sunlight per square meter of the panel. As we have mentioned before, average domestic solar panels hold a capacity ranging from 1,000 watts to 4,000 watts.

What is watts per square meter?

Watts per square meter is a measurement that quantifies the power output of solar panels relative to their surface area. It indicates how much electricity a solar panel produces per space unit, allowing for comparisons between different panel types and sizes.

What is solar panel watts per square meter (W/M)?

Solar panel watts per square meter (W/m) measures the power output of a solar panel based on its size. Compare solar panels to see which generates most electricity per square meter. A higher W/m value means a solar panel produces more power from a given area. This can help you determine how many solar panels you need for your energy needs.

What is a solar power per square meter calculator?



It also includes wiring, inverter, charge controller, and battery bank (if used). A solar power per square meter calculator takes details regarding these factors and then gives the accurate output generated by the solar panel per square meter. After this, it's time to learn about solar panel output calculators.

What is the capacity of a solar panel?

Capacity is also called 'rated output', which stands for the maximum number of electricity that the solar system can generate under ideal conditions. If there are enough direct sunshine and peak hours, the capacity is large. Usually, the typical amount can be 1,000 watts of sunlight per square meter of the panel.



How many watts does a three square meter solar panel hold



Solar Panel Wattage Calculation: How To Calculate In 2025?

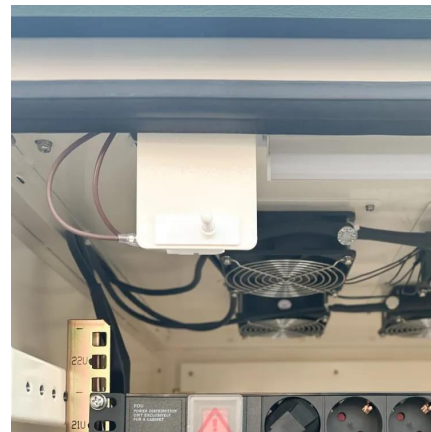
Most residential panels in 2025 have a solar panel wattage rating between 350 and 480 watts, with installers offering panels ranging from 390 to 460 watts on average. Commercial ...

[WhatsApp](#)

[How to Understand Solar Panel Watts Per Square Meter](#)

Watts per square meter is a metric used to measure the power output of solar panels relative to their surface area. It represents a solar panel's electricity per square meter ...

[WhatsApp](#)



Solar Panels Wattage Calculated

As a solar panel owner, you will be required to calculate the sizing of your solar panel components to the wattage per square meter. But don't stress; we got you covered. We will break down the ...

[WhatsApp](#)

How many watts per square meter is a solar panel? , NenPower

The average power output of a solar panel is approximately 150 to 400 watts per square meter, depending on various factors including



the technology used and the angle of ...

[WhatsApp](#)



[How Much Power \(Watts\) does a Solar Panel Produce?](#)

Usually, the typical amount can be 1,000 watts of sunlight per square meter of the panel. As we have mentioned before, average domestic solar panels hold a capacity ranging from 1,000 ...

[WhatsApp](#)



[Watts Per Square Meter Solar Panel - The Go-to Guide](#)

In this comprehensive guide, we'll delve into the intricacies of watts per square meter for solar panels, exploring what they are, how they work, and why they matter in solar ...

[WhatsApp](#)



How Much Do Solar Panels Weigh? 2025 Accurate Top Advice

How Much Do Solar Panels Weigh? Most solar panels weigh between three to four pounds per square foot. With a typical figure of 40 pounds per 60-cell solar panel, the 3x8 ...

[WhatsApp](#)





Contact Us

For catalog requests, pricing, or partnerships, please visit:
<https://www.straighta.co.za>