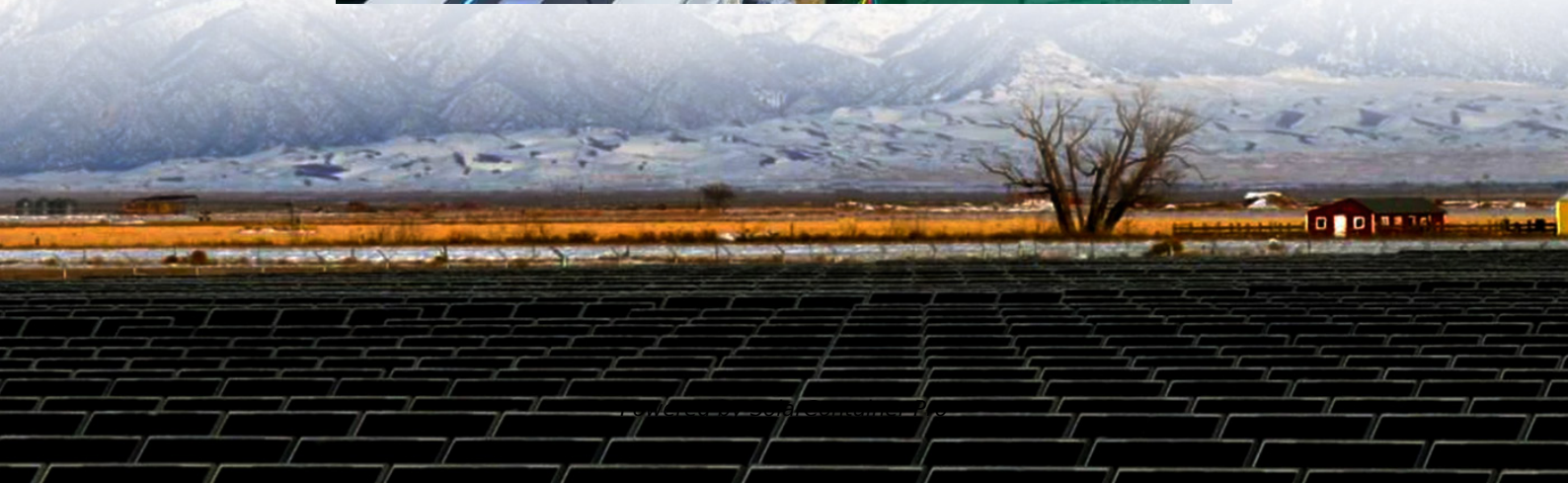
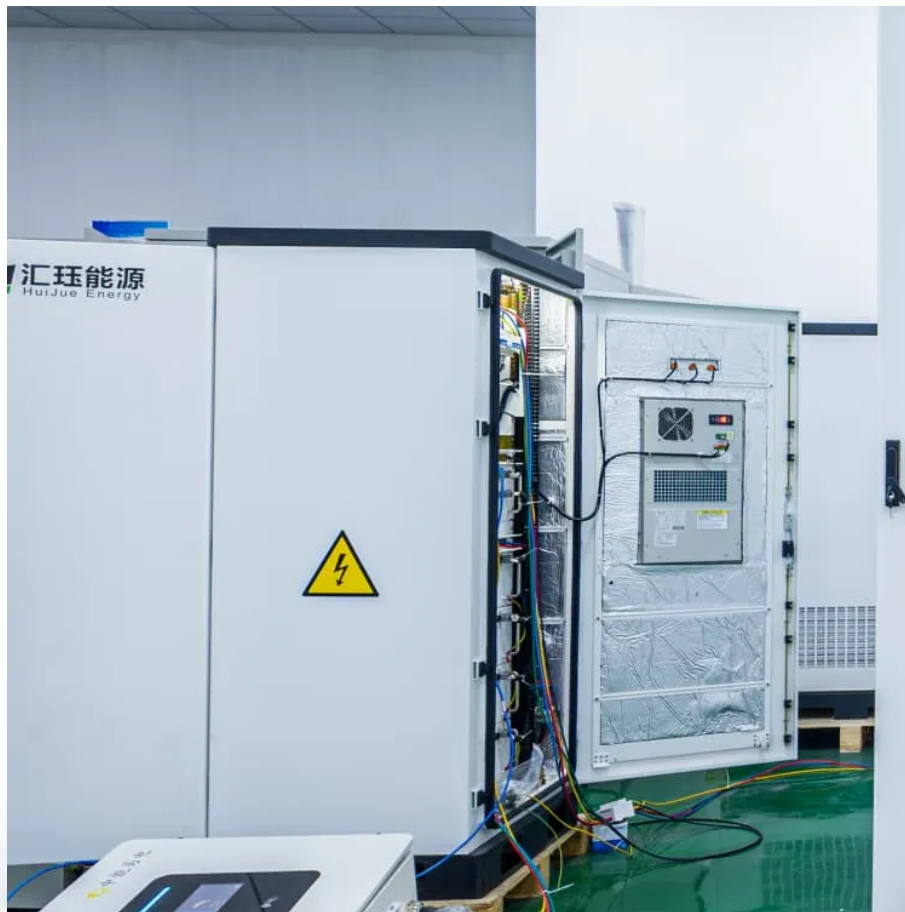


# **How many watts does a solar integrated machine on a construction site usually have**





## Overview

---

How much energy does a 100 watt solar system produce?

A 100-watt solar panel installed in a sunny location (5.79 peak sun hours per day) will produce 0.43 kWh per day. That's not all that much, right?

However, if you have a 5kW solar system (comprised of 50 100-watt solar panels), the whole system will produce 21.71 kWh/day at this location.

How many watts can a solar panel produce?

For example: A 100-watt panel can produce 100 watts per hour in direct sunlight. A 400-watt panel can generate 400 watts per hour under the same conditions. This doesn't mean they'll produce that amount all day, output varies with weather, shade, and panel orientation.

How much energy does a 700 watt solar system produce?

The biggest 700-watt solar panel will produce anywhere from 2.10 to 3.15 kWh per day (at 4-6 peak sun hours locations). Let's have a look at solar systems as well: A 6kW solar system will produce anywhere from 18 to 27 kWh per day (at 4-6 peak sun hours locations).

How much energy does a solar panel produce a day?

Here are some examples of individual solar panels: A 300-watt solar panel will produce anywhere from 0.90 to 1.35 kWh per day (at 4-6 peak sun hours locations). A 400-watt solar panel will produce anywhere from 1.20 to 1.80 kWh per day (at 4-6 peak sun hours locations).

How much energy does a 300 watt solar panel produce?

A 300-watt solar panel will produce anywhere from 0.90 to 1.35 kWh per day (at 4-6 peak sun hours locations). A 400-watt solar panel will produce anywhere from 1.20 to 1.80 kWh per day (at 4-6 peak sun hours locations). The biggest 700-watt solar panel will produce anywhere from 2.10 to 3.15



kWh per day (at 4-6 peak sun hours locations).

How many solar panels do you need per day?

In California and Texas, where we have the most solar panels installed, we get 5.38 and 4.92 peak sun hours per day, respectively. Quick outtake from the calculator and chart: For 1 kWh per day, you would need about a 300-watt solar panel. For 10kW per day, you would need about a 3kW solar system.



## How many watts does a solar integrated machine on a construction

---



### [How Many Watts Does a CPAP Use? \(Power Consumption Test\)](#)

How Many Watts is a CPAP? The average CPAP uses between 20 - 70 watts. In addition, CPAP machines have a peak wattage of about 100 watts. This peak power surge lasts for 1 or 2 ...

[WhatsApp](#)

### [How Many Watts Do You Use? \(Appliance Wattage Chart\)](#)

On this page, you will find out how many watts common appliances use including kitchen, home, audio, visual, tools, garden, and automotive electronics. Working out how many watts you use ...

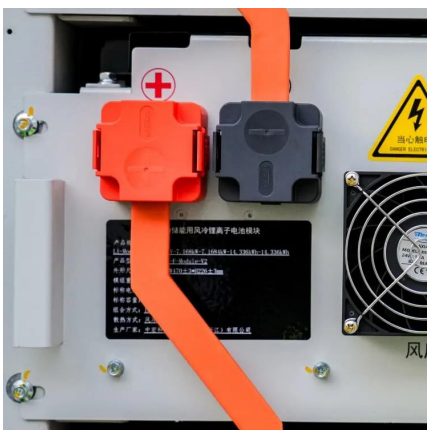
[WhatsApp](#)



### **How many watts does solar energy usually use? , NenPower**

The amount of watts utilized by solar energy systems typically ranges from 250 watts to 400 watts per panel, with entire systems depending on additional factors, 2. efficiency ...

[WhatsApp](#)



### [How Many Watts Does a Welder Use? - WeldGallery](#)

A welder typically uses between 3,000 to 12,000 watts, depending on the type and size of the machine. This wide range reflects the different



welding techniques, materials, and ...

[WhatsApp](#)



### **How many watts does a solar light on a construction site charge?**

When selecting solar lights for a construction site, key considerations include the total wattage required, the specific environment where the lights will be installed, and the ...

[WhatsApp](#)



### **How many watts does the solar energy storage and control integrated**

For residential use, systems may range from 1,000 watts to 5,000 watts, while larger commercial or industrial systems can exceed 10,000 watts, sometimes reaching several ...

[WhatsApp](#)



### **[6 Ways Solar Power Can Be Used on Construction Sites](#)**

Below are six ways solar power can be used in construction sites so you can finally say goodbye to loud generators and embrace clean and silent solar power. 1. Off-grid Power System. It is ...

[WhatsApp](#)

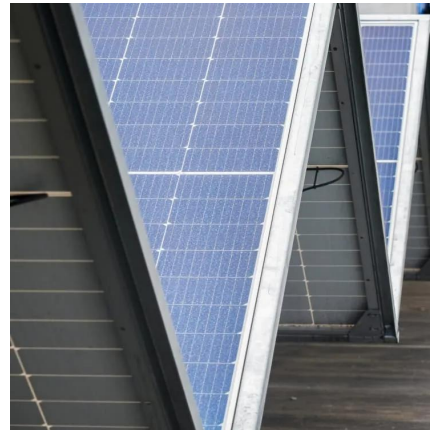




### [How Many kWh Does A Solar Panel Produce Per Day?](#)

For 1 kWh per day, you would need about a 300-watt solar panel. For 10kW per day, you would need about a 3kW solar system. If we know both the solar panel size and peak sun hours at ...

[WhatsApp](#)



### **How many watts are the solar lights on the construction site?**

Typically, solar lights utilized at construction sites operate within a range of 30 to 400 watts, influenced by several factors including brightness requirements, area size, and ...

[WhatsApp](#)



### **How many watts does the solar light on the construction site have**

For typical construction scenarios, solar lights range from 10 watts for small, localized areas to over 150 watts for larger, more complex environments needing substantial ...

[WhatsApp](#)



## How Many Watts Does Drill Use? - Power Consumption Explained

How many watts does a cordless drill use? Cordless drills are designed to be energy-efficient, and their power consumption is usually measured in volts (V) and ampere ...

[WhatsApp](#)



## [The Complete Off Grid Solar System Sizing Calculator](#)

Using your daily energy usage and Peak Sun Hours, and assuming a system efficiency of 70%, the calculator estimates the Wattage required for your off-grid solar system's ...

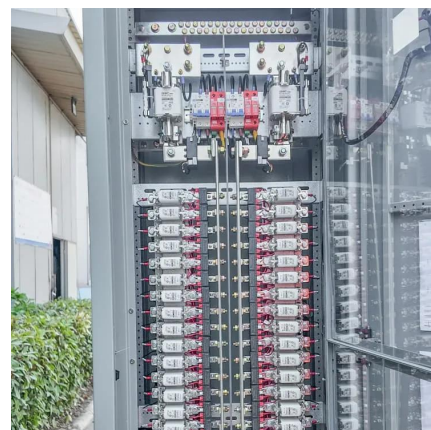
[WhatsApp](#)



## Solar Power for Construction Sites: Sizing, Cost, and ROI Calculator

1 day ago · Why solar for construction site operations Construction sites run on power: lighting, IT, pumps, fans, small tools, surveillance, and sometimes EV chargers for compact equipment.

[WhatsApp](#)





## Contact Us

---

For catalog requests, pricing, or partnerships, please visit:  
<https://www.straighta.co.za>