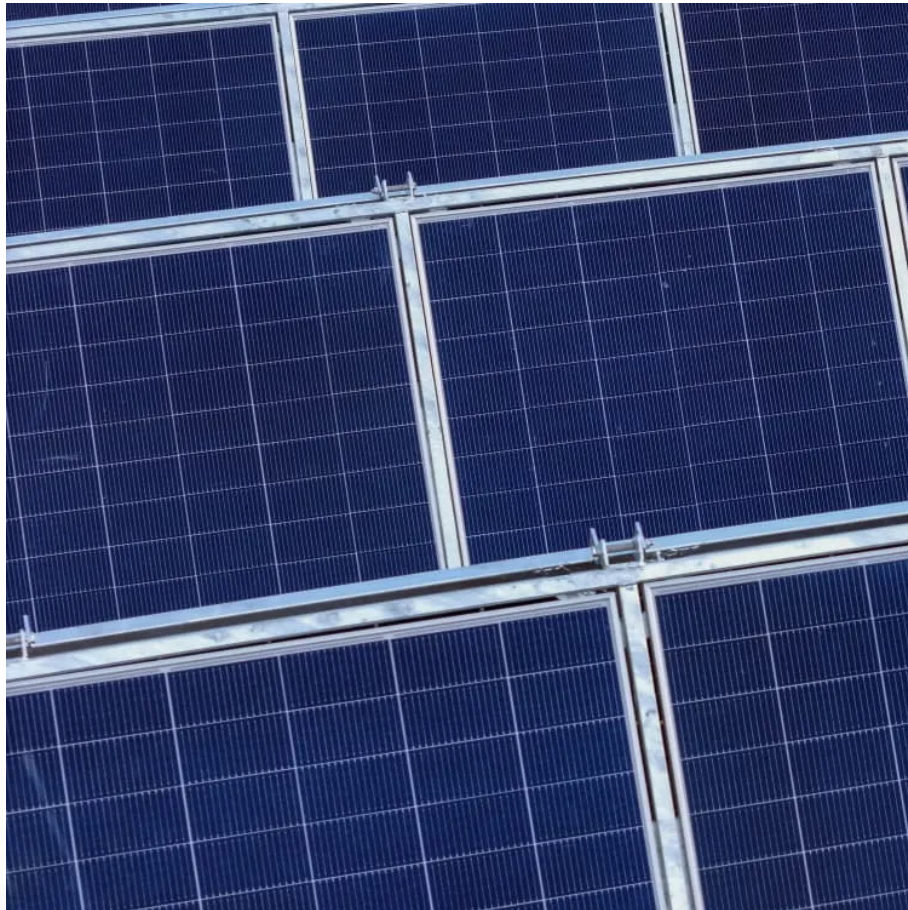


# **How many watts does a 9w solar charging panel have**





## Overview

---

Note: If you already have a solar panel and want to know how long it will take to charge your battery, use our solar battery charge time calculator.

1. Enter battery Capacity in amp-hours (Ah): For a 100ah battery, enter 100. If the battery capacity is mentioned in watt-hours (Wh), divide Wh by the battery's voltage (v). 2. Enter battery.

Here's a chart about what size solar panel you need to charge different capacity 12v lead-acid and Lithium (LiFePO4) batteries in 6 peak sun hours using an MPPT charge controller.

Follow these 6 steps to calculate the estimated required solar panel size to recharge your battery in desired time frame.

Here's a chart about what size solar panel you need to charge different capacity 24v lead-acid & Lithium (LiFePO4) batteries in 6 peak sun hours using an MPPT charge controller.

What does 9w mean for solar panels?

The term “ 9W ” in the context of solar panels refers to the power output capacity of a particular solar panel module, specifically indicating that the panel can generate a maximum of nine watts under optimal conditions. 1.How many watts a solar panel to charge a battery?

You need around 360 watts of solar panels to charge a 12V 100ah Lithium (LiFePO4) battery from 100% depth of discharge in 4 peak sun hours with an MPPT charge controller. What Size Solar Panel To Charge 50Ah Battery?

.

How do I determine the required wattage for my solar panel system?

Determining the required wattage for your solar panel system involves several key considerations: Energy consumption: Calculate your average daily electricity usage in kilowatt-hours (kWh) based on your household's needs.



How many watts a solar panel to charge 130ah battery?

You need around 380 watts of solar panels to charge a 12V 130ah Lithium (LiFePO4) battery from 100% depth in 5 peak sun hours with an MPPT charge controller. What Size Solar Panel To Charge 140Ah Battery?

.

How many watts are in a solar panel?

The most common solar panel sizes are 100-watt, 200-watt, 300-watt, and 400-watt panels. This is a specified solar panel wattage that is generated during peak sun hours. In the US, we get a daily average of about 3 peak sun hours (Alaska) to 7 peak sun hours (Arizona).

How do I choose the right solar panel size for battery charging?

Calculating the right solar panel size for battery charging involves assessing your energy needs and understanding the factors that affect solar panel performance. Start by identifying the devices you want to power and their energy consumption. List each device along with its wattage and the number of hours you'll use it daily.

What is solar wattage?

Wattage refers to the amount of electrical power a solar panel can produce under standard test conditions (STC), which simulate a bright sunny day with optimal solar irradiance ( $1,000 \text{ W/m}^2$ ), a cell temperature of  $25^\circ\text{C}$ , and clean panels. In simpler terms, a panel's wattage rating tells you its maximum power output under ideal conditions.



## How many watts does a 9w solar charging panel have

---



[How many watts does a good solar charging panel have](#)

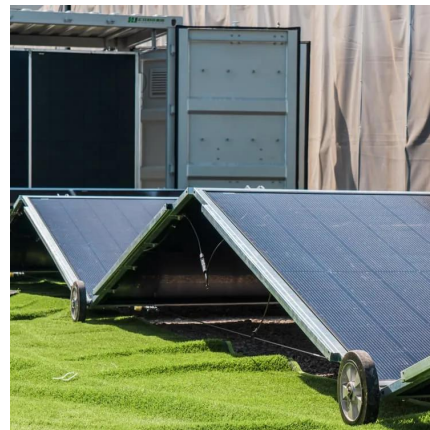
Typically, residential solar panels range from 100 to 400 watts, while some high-efficiency models exceed this range. However, factors like panel orientation, installation ...

[WhatsApp](#)

[How many watts does a solar panel charge?..](#)  
[NenPower](#)

Solar panels vary in wattage capacity; standard residential panels commonly range from 250 to 400 watts per panel under optimal conditions. One significant factor affecting ...

[WhatsApp](#)



[What percentage of a solar panels watt rating is to be](#)

Question I have 4 195w eco worthy solar panels wired in parallel, flat mounted to the roof of my promaster van, and even though the total watts should be 780 watts (4\*195) at peak, the ...

[WhatsApp](#)



## What Size Solar Panel To Charge 100Ah Battery? (Calcalator)

Here is how this solar panel size calculator for 100Ah batteries works: Let's say that you have a 100Ah 24V deep cycle battery. You want the





solar panel to charge it in 5 peak sun hours ...

[WhatsApp](#)



### How Many Solar Panel Watts for 12V Battery Charging: A ...

To charge a 12V battery with a capacity of 100 amp-hours in five hours, you need at least 240 watts from your solar panels (20 amps x 12 volts). A 300-watt solar panel or three ...

[WhatsApp](#)



### 12v Marine Battery charge wattage? : r/batteries

I was told that the slower you charge a battery the healthier it is for it long term. Is that correct? I am looking at 12v solar panels to keep my boat battery charged. There are 4 options. 3.3w, ...

[WhatsApp](#)



### How to Calculate Solar Panel for Battery Charging: A Step-by ...

Calculate Energy Needs: Identify your daily energy consumption in kilowatt-hours (kWh) and determine the required solar panel output based on sunlight hours in your location.

[WhatsApp](#)





## What Size Solar Panel To Charge 100Ah Battery? (Calculator)

We will show you exactly how to calculate the solar panel wattage you need to charge a 100Ah battery. To make things even easier, we have created: 100Ah Battery Solar Size Calculator.

[WhatsApp](#)



[How many watts does solar charging power . NenPower](#)

Each of these elements plays a critical role in determining the total wattage produced during solar charging. Solar panels, through their photovoltaic cells, convert sunlight ...

[WhatsApp](#)

## Contact Us

---

For catalog requests, pricing, or partnerships, please visit:  
<https://www.straighta.co.za>