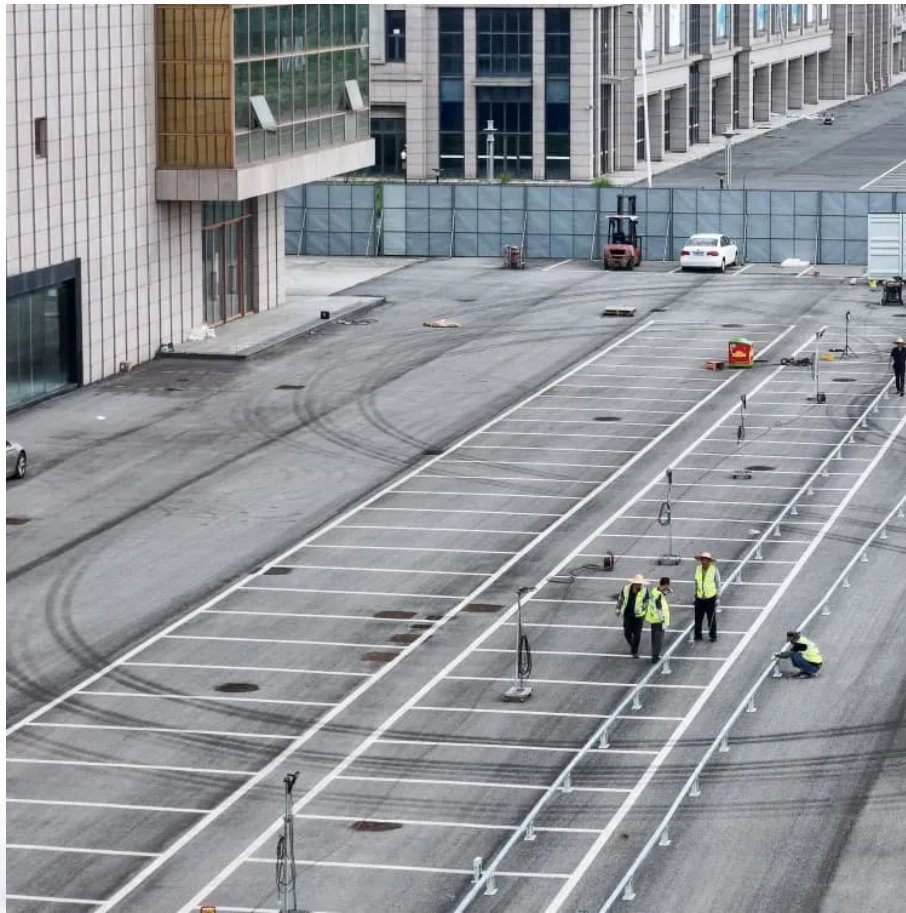


How many watts does a 7 4v solar battery charging panel have





Overview

Note: If you already have a solar panel and want to know how long it will take to charge your battery, use our solar battery charge time calculator.

1. Enter battery Capacity in amp-hours (Ah): For a 100ah battery, enter 100. If the battery capacity is mentioned in watt-hours (Wh), divide Wh by the battery's voltage (v). 2. Enter battery.

Here's a chart about what size solar panel you need to charge different capacity 12v lead-acid and Lithium (LiFePO4) batteries in 6 peak sun hours using an MPPT charge controller.

Follow these 6 steps to calculate the estimated required solar panel size to recharge your battery in desired time frame.

Here's a chart about what size solar panel you need to charge different capacity 24v lead-acid & Lithium (LiFePO4) batteries in 6 peak sun hours using an MPPT charge controller.

Typically, you can expect a small solar panel designed for battery charging to generate anywhere from 50 to 300 watts. Larger, more efficient panels designed for residential use often produce between 250 to 400 watts, dependent on their size and technology. How many watts a solar panel to charge a battery?

You need around 360 watts of solar panels to charge a 12V 100ah Lithium (LiFePO4) battery from 100% depth of discharge in 4 peak sun hours with an MPPT charge controller. What Size Solar Panel To Charge 50Ah Battery?

.

How many batteries can a 400 watt solar panel charge?

As we can see, a 400-watt solar panel will need 2.7 peak sun hours to charge a 100Ah 12V lithium battery. If we presume that we get 5 peak sun hours per day, we can actually fully charge almost two 100Ah batteries (or one 200Ah battery).



How many watts a solar panel to charge 130ah battery?

You need around 380 watts of solar panels to charge a 12V 130ah Lithium (LiFePO4) battery from 100% depth in 5 peak sun hours with an MPPT charge controller. What Size Solar Panel To Charge 140Ah Battery?

.

How much power does a solar panel need?

Let's say you have a 100 watt load that needs to be operated for approximately 10 hours, in that case the total power required could be estimated simply by multiplying the load with hours, as given under 100 Watts x 10 hours = 1,000 Watt hours. This becomes the absolute power necessary from the panel.

How many watts do I need to charge a 12V battery?

You need around 200 watts of solar panels to charge a 12V 120ah lead-acid battery from 50% depth of discharge in 5 peak sun hours with an MPPT charge controller. You need around 350 watts of solar panels to charge a 12V 120ah lithium battery from 100% depth of discharge in 5 peak sun hours with an MPPT charge controller.

How many watts is a solar panel?

Therefore taking into account the 4 to 5 hours sunshine per day consideration, we calculate the true power for the solar panel which would enable your load to keep running throughout the year . 1,000 Watt hours / 5 hours sunlight = 200 Watt solar panel.



How many watts does a 7 4v solar battery charging panel have



What Size Solar Panel Do I Need to Charge a 12v Battery?

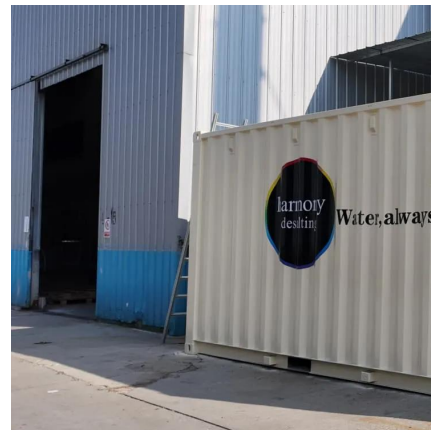
How many solar panels you need to charge a 12v battery? Calculating the number of solar panels for your 12V battery depends on understanding your specific energy requirements. Solar ...

[WhatsApp](#)

What Size Solar Panel To Charge 100Ah Battery? (Calculator

We will show you exactly how to calculate the solar panel wattage you need to charge a 100Ah battery. To make things even easier, we have created: 100Ah Battery Solar Size Calculator.

[WhatsApp](#)



How to Calculate Solar Panel, Inverter, Battery Parameters

Let's say you have a 100 watt load that needs to be operated for approximately 10 hours, in that case the total power required could be estimated simply by multiplying the load ...

[WhatsApp](#)

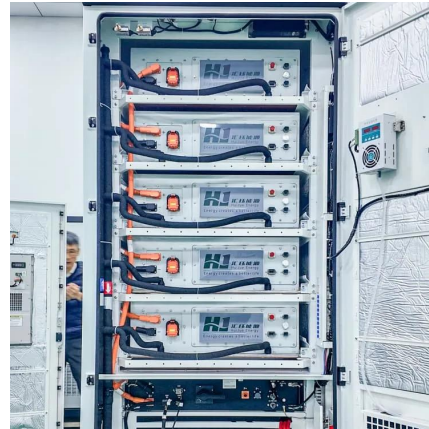
How to Calculate Solar Panel for Battery Charging: A Step-by ...

To calculate the solar panel required for battery charging, follow these essential steps. Each step helps ensure you select the right solar panel size



for your energy needs.

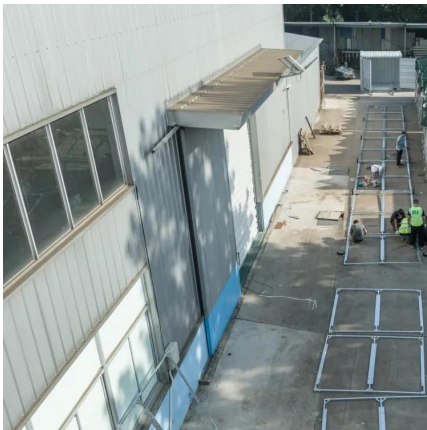
[WhatsApp](#)



Solar Panel Size Calculator , Check Battery Charge Duration

Required Solar Panel Size = $1800\text{Wh} / (5 \text{ hours} \times 4 \text{ hours}) = 1800\text{Wh} / 20\text{h} = 90\text{W}$. So, you would need a solar panel with at least 90W capacity to charge your 150Ah, 12V ...

[WhatsApp](#)



[Solar Panel Charging: Max Your Battery Life!](#)

Solar panels must provide a higher voltage than the charging batteries. A 12V battery system usually requires panels to provide 17- 19V to charge appropriately, considering voltage drops.

...

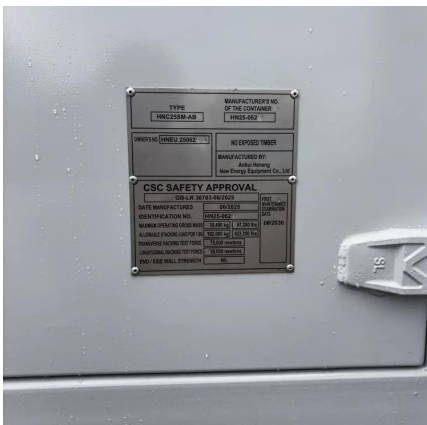
[WhatsApp](#)



50 Watt Solar Panel To Charge 12v Battery (Everything To Know)

How much power does a 50-watt solar panel produce? 50-watt solar panel will produce around 250-300Wh per day in 5 peak sun hours. Now you might be wondering how ...

[WhatsApp](#)

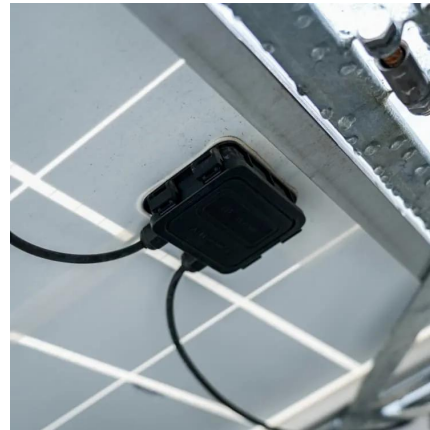




Solar Panel Charge Time Calculator: Accurately Estimate How ...

Panel wattage: The wattage of a solar panel determines how quickly it can supply energy. If the panel's wattage is high, it can send energy to the battery more quickly, and vice ...

[WhatsApp](#)



How many watts does a battery solar panel have , NenPower

Typical household solar panels have ratings between 250 to 400 watts, when factoring in connected batteries, 3. Additionally, solar panel performance can be influenced by ...

[WhatsApp](#)

Contact Us

For catalog requests, pricing, or partnerships, please visit:
<https://www.straightta.co.za>