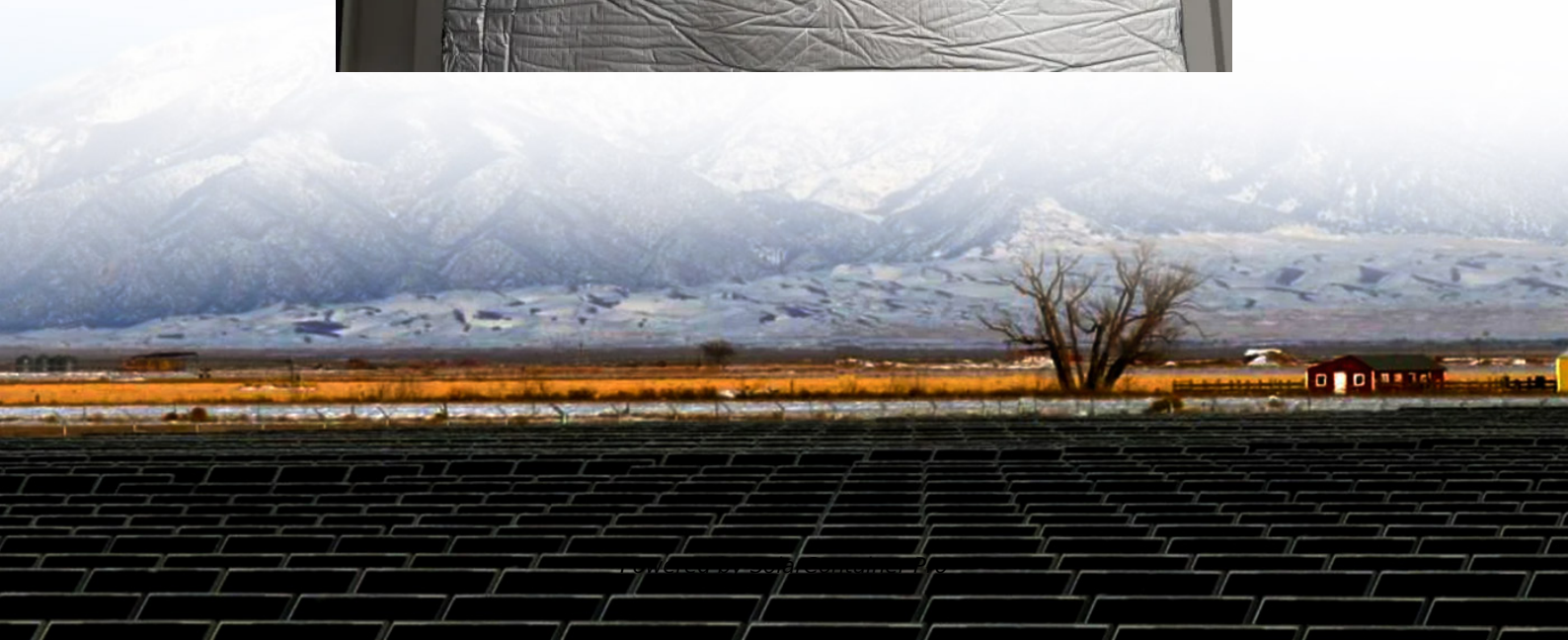


How many watts does a 60A solar cell have





Overview

How much wattage should a solar panel have?

When considering solar panel sizes and wattage, you'll typically find options ranging from 250 to 400 watts. Opting for higher wattage units can be a game-changer, especially for those with limited roof space.

What is solar wattage?

Wattage refers to the amount of electrical power a solar panel can produce under standard test conditions (STC), which simulate a bright sunny day with optimal solar irradiance ($1,000 \text{ W/m}^2$), a cell temperature of 25°C , and clean panels. In simpler terms, a panel's wattage rating tells you its maximum power output under ideal conditions.

How much power does a 100 watt solar panel produce?

Solar Panels Efficiency during peak sun hours: 80%, this means that a 100 watt solar panel will produce 80 watts during peak sun hours. [Click here to read more.](#) There are no devices drawing power from the battery during the charging process.

How much power does a 400 watt solar panel produce?

A 400 W solar panel can produce around 1.2-3 kWh or 1,200-3,000 Wh of direct current (DC). The power produced by solar panels can vary depending on the size and number of your solar panels, the efficiency of solar panels, and the climate in your area. How many solar panels are needed to run a house?

.

How many Watts Does a solar panel produce per square foot?

Dividing the specified wattage by the square footage of the solar panel will give us just this result: The average solar panel output per area is 17.25 watts per square foot. Let's say that you have 500 square feet of roof available for



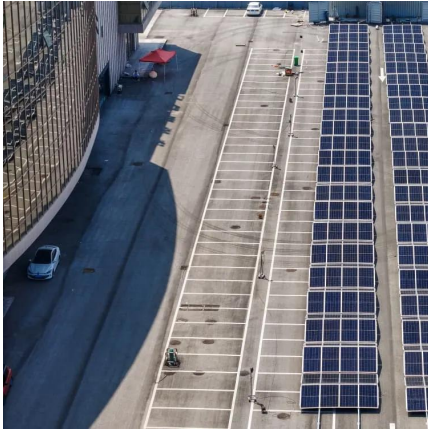
solar panel installation.

How do you calculate solar panel wattage?

Divide the average daily wattage usage by the average sunlight hours to measure solar panel wattage. Moreover, panel output efficiency directly impacts watts and the system's overall capacity. Nevertheless, energy usage, sunshine exposure, system capacity, panel types and materials all have an impact on the calculation.



How many watts does a 60A solar cell have



How Many Watts Does a 60A Solar Cell Use A Clear Guide for ...

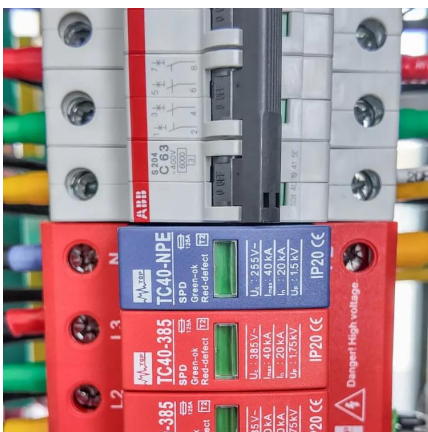
The answer depends on voltage - solar power calculations require understanding this crucial relationship between amps and volts. Key Takeaway: Wattage = Amps × Volts. For a 60A ...

[WhatsApp](#)

Understanding Solar Panel Sizes and Wattage: A Complete Tutorial

When considering solar panel sizes and wattage, you'll typically find options ranging from 250 to 400 watts. Opting for higher wattage units can be a game-changer, ...

[WhatsApp](#)



40 Watt Solar Panel: Everything You Need To Know - Dot Watts®

How many amps does a 40-watt solar panel produce To calculate the value of amps or current use this formula (Amps = Watt/Volts) Under ideal sunlight conditions, a 12v 40W ...

[WhatsApp](#)

[Standard Solar Panel Sizes And Wattages \(100W-500W ...](#)

To bridge that gap of very useful knowledge needed, we have compared and averaged the sizes of 100-watt to 500-watt solar panels



available on the market. The goal here is to get to the ...

[WhatsApp](#)



How many watts of solar panels are needed for a 60A battery

To determine the necessary solar panel wattage, start by calculating the battery's total watt-hours by multiplying the battery's amp-hours by voltage. Next, assess daily energy ...

[WhatsApp](#)



How Many Watts Does a 60A Solar Cell Use A Clear Guide for Solar

The answer depends on voltage - solar power calculations require understanding this crucial relationship between amps and volts. Key Takeaway: Wattage = Amps × Volts. For a 60A ...

[WhatsApp](#)



Contact Us

For catalog requests, pricing, or partnerships, please visit:
<https://www.straighta.co.za>